



Fact Book
2016-2017

Preface

I abhor averages. I like the individual case. A man may have six meals one day and none the next, making an average of three meals per day, but that is not a good way to live.

Louis D. Brandeis

The Office of Institutional Research is responsible for consistent, accurate, and timely official reporting of Clayton State institutional information; using research and analysis in support of institutional management, assessment and planning; to facilitate decision-making and institutional improvement.

The 2016-2017 FACT BOOK documents the characteristics of Clayton State University and the factors that cause change in these characteristics in order to inform strategic and long-range planning efforts.

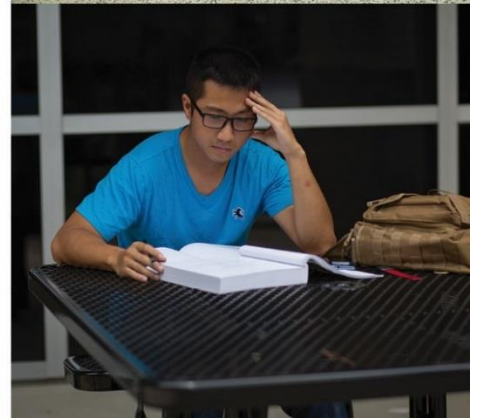
Every effort has been made to ensure that the data contained in this document are accurate and easy to use. Prior to use of the data in policy development and/or analysis, you may wish to contact our office to ensure that you receive any post-publication changes.

Narem Reddy, Ph.D.
Dean of Institutional Research and Budgets
Clayton State University
215 University Center
2000 Clayton State Boulevard
Morrow, GA 30260
678-466-4100

Table of contents

Preface.....	iii
<i>Our University.....</i>	5
University History.....	6
Mission of the University.....	8
Strategic Plan 2022	9
Organization Charts for the Upcoming Fiscal Year	10
Provost Level Organization Charts for Upcoming Fiscal Year.....	12
Accreditations and Approvals.....	20
Degrees and Majors Authorized.....	21
Fall Enrollment History and Academic Highlights	23
Year In Review.....	25
Legends/Mythology	29
<i>Our Students.....</i>	31
Five Year Enrollment at Clayton State University	32
Fall Semester Full-Time Equivalency	35
Spring Semester Full-Time Equivalency.....	36
Summer Semester Full-Time Equivalency	37
Enrollment by Student Status.....	38
Fall Enrollment by Ethnic Group.....	41
Enrollment by Gender and College	42
Enrollment by Age	43
Enrollment by Full-Time/Part-Time Status.....	44
Student Course Loads	45
Enrollment by Student Major and College	46
Student Credit Hours	48
New Student Enrollment	51
First-Time Full-Time Freshmen	55
Fall Enrollment by Georgia County	59
Fall 2016 Enrollment by State	60
Fall Enrollment by Country of Origin.....	61
<i>Our Faculty</i>	63
2016–17 Full-Time Instructional Faculty.....	64
Fall 2016 Full-Time Instructional Faculty.....	71
2016-17 Graduate Faculty	75
2016-17 Instructional Faculty Committee Memberships	76
<i>Our Finances</i>	79
Tuition Revenue	80
Grants & Contracts by Type.....	81
Education and General Fund Expenditures by Function	82
<i>Our Graduates</i>	83
FY 2014 – 2016 Degrees Conferred	84
Survey of Graduating Students	89

Our University



University History

Clayton State University opened in 1969 as Clayton Junior College, with Dr. Harry S. Downs as the founding president. The Board of Regents of the University System of Georgia elevated the institution to baccalaureate status (as Clayton State College) in 1986, to university status (as Clayton College & State University) in 1996 and approved the present name on May 18, 2005.

Upon the retirement of Harry Downs in January 1994, Dr. Richard A. Skinner became the University's second president. In June 1999, Skinner left Clayton State to head the University System of Georgia's new distance learning initiative, Georgia GLOBE. Michael F. Vollmer, Clayton State's acting Vice President for Fiscal Affairs and former Interim President of Middle Georgia College, served as Interim President for one year.

In April 2000, Dr. Stephen R. Portch, Chancellor of the University System of Georgia, announced that the Board of Regents had selected Dr. Thomas K. Harden as the University's new president, effective in June of that year. When President Harden was named chancellor of the University of Wisconsin Green Bay in December 2008, Dr. Thomas J. Hynes, Jr., provost of the University of West Georgia, was named interim president of Clayton State, starting in May 2009. On Feb. 9, 2010, the Board of Regents announced that Hynes' appointment as president of Clayton State had been made permanent.

The beginning of the University can be traced to 1965 when the Board of Regents authorized three new junior colleges for the University System, one of which was designated for south metropolitan Atlanta. The Board considered several locations in the region, and chose the present site in Clayton County because of the unique combination of natural beauty and easy access to the then recently-completed Interstate 75. The citizens of Clayton County subsidized the initial construction of the state institution by passing a bond issue for nearly \$5 million. Construction of the new campus began in fall 1968, and the doors opened to 942 students less than a year later on September 30, 1969.

In 1981, the University added a technical division offering applied associate degrees and certificates in cooperation with the Georgia Department of Technical and Adult Education. Five years later Clayton State began its baccalaureate mission with programs in business administration and nursing. The institution has continued to add majors at the bachelor's level while maintaining some associate degree programs. Through the establishment of the Bachelor of Applied Science degree, Clayton State emerged as a national leader in promoting opportunities for graduates from applied associate degree programs to "bridge" to bachelor's degrees with little, if any, loss of credit.

Five years after initiating its baccalaureate programs in 1986, Clayton State opened the doors to the finest small performance facility in the southeastern United States, Spivey Hall. Now, 20 years later, Spivey Hall retains its local, national and international reputation by presenting the best in jazz and classical music and an education outreach program that serves thousands of school children from throughout metro Atlanta annually.

Clayton State now enrolls 7,000+ students in degree credit programs that, in the words of the University's mission, provide "career-oriented education with a solid liberal arts foundation." Current bachelor's degree majors include; Accounting (B.B.A.), Administrative Management (B.A.S.), Biology (B.S.), Business - General (B.B.A.), Communications and Media Studies (B.A.), Computer Science (B.S.), Criminal Justice (B.S.), Dental Hygiene (B.S.D.H.), Dental Hygiene (RDH - B.S.D.H.), English (B.A.), Film Production (B.A.), Health Care Management (B.S.), Health & Fitness Management (B.S.), Health Sciences (B.S.), History (B.A.), Homeland Security/Emergency Management (B.A.S.), Information Technology (B.I.T.), Information Technology WebBSIT (online), Integrative Studies (B.S.), Legal Studies (B.S.), Liberal Studies (B.A.), Management (B.B.A.), Marketing (B.B.A.), Mathematics (B.S.), Middle Level Education (B.A.), Nursing - Basic Licensure (B.S.N.), Nursing - For Existing R.N.'s (RN to B.S.N.), Paralegal Studies (B.S.), Performing Arts (B.A.), Philosophy (B.A.), Political Science (B.S.), Psychology and Human Services (B.S.), Sociology (B.S.), Supply Chain Management (B.B.A.), Technology Management (B.A.S.). Several other baccalaureate programs are currently under development.

On November 16, 2005, Clayton State University's first graduate level program, the Master of Arts in Liberal Studies, was approved by the Board of Regents of the University System of Georgia, opening the door to a whole new world of meeting the educational needs of students and citizens in metro Atlanta. The Master of Arts in Liberal Studies is the only degree of its kind in the state, and is designed to give students with highly focused undergraduate degrees the opportunity to explore a more multidisciplinary approach. A second graduate program, the Master of Science in Nursing, was approved by the Board of Regents in June 2006, a third, the Master of Health Administration, was approved in August 2006, and a fourth, a Master of Business Administration, in January 2007. The University's fifth and sixth graduate programs, a Master of Arts in Teaching in English and a Master of Arts in Teaching in Mathematics, were approved by the Board of Regents in October 2008. Graduate programs in Archival Studies (2009) and Psychology (2010) are the University's seventh and eighth master's programs. On November 16, 2005, Clayton State University's first graduate level program, the Master of Arts in Liberal Studies, was approved by the Board of Regents of the University System of Georgia, opening the door to a whole new world of meeting the educational needs of students and citizens in metro Atlanta. The Master of Arts in Liberal Studies is the only degree of its kind in the state, and is designed to give students with highly focused undergraduate degrees the opportunity to explore a more multidisciplinary approach. A second graduate program, the Master of Science in Nursing, was approved by the Board of Regents in June 2006, a third, the Master of Health Administration, was approved in August 2006, and a fourth, a Master of Business Administration, in January 2007. The University's fifth and sixth graduate programs, a Master of Arts in Teaching in English and a Master of Arts in Teaching in Mathematics, were approved by the Board of Regents in October 2008. Graduate programs in Archival Studies (2009) and Psychology (2010) are the University's seventh and eighth master's programs.

In January 1998, Clayton State became the first public university in the Southeast and one of the first in the nation to issue notebook computers to all students at all levels in all majors. This "Information Technology Project" has transformed the campus and made Clayton State a national pioneer in "ubiquitous computing."

The James M. Baker University Center, Clayton State's signature building, was completed in August 2004 and named in honor of Clayton State alumnus James M. "Jim" Baker in November 2005, and provides the University with a true "Center" for student life. The building contains a food service area, a help desk for servicing notebook computers, state-of-the-art visual technology classrooms, offices and enhanced learning facilities including wireless capabilities and more than 2,000 data drops.

In a six week period between August and October 2008, the University dedicated three new buildings; the University's first student housing (Laker Hall), the Student Activities Center and a new building for the AACSB-accredited School of Business. The new annex to the Natural and Behavioral Sciences Building (which was itself renovated in 2011), the Laboratory Annex Building, added more laboratory space for science classes and opened in January 2011.

The past several years at Clayton State have also been highlighted by the establishment of the first joint state and federal archives facilities adjacent to campus, the institution of a comprehensive strategic planning process, and the reaffirmation of the University's accreditation by the Commission on Colleges of the Southern Association of Colleges and Schools (SACS).

Clayton State University is an NCAA Division II member, competing in one of the top conferences in the nation at that level - the Peach Belt Conference. The Clayton State Lakers have enjoyed much success in their 20-year history, capped during the 2010/2011 season by the women's basketball team winning the national championship and finishing 35-1. Clayton State currently fields athletic teams in; men's and women's soccer, men's and women's cross country, men's and women's basketball, men's and women's indoor track, men's and women's outdoor track, men's golf and women's tennis.

Source: University History, About Clayton State

Mission of the University

Clayton State University cultivates an environment of engaged, experienced-based learning, enriched by active community service, that prepares students of diverse ages and backgrounds to succeed in their lives and careers.

Through a distinctive combination of proven and innovative methods of teaching and learning, Clayton State University will excel in preparing students from many walks of life to meet the challenges of living and working in a dynamic, global society.

Clayton State University is committed to:

- Creating an outstanding educational experience that stimulates intellectual curiosity, critical thinking, and innovation.
- Engendering a spirit of openness, understanding, collaboration, and mutual respect throughout the University.
- Fostering learning that engages students, faculty, staff, alumni, and the greater community.
- Expanding and allocating resources strategically according to Mission and Values, to support overall institutional effectiveness.
- Providing an inviting and supportive campus community for faculty, staff, and students.
- Repositioning Clayton State University in the higher education marketplace and beyond.

Source: Mission of the University, About Clayton State

Strategic Plan 2022

Positioning the University for continued success during a period of dramatic change in higher education

Vision

To become a national model for university-based community engagement and for equipping students with the knowledge, skills, and motivations for learning and success.

Mission

Through teaching, scholarship and service, we provide an environment of experience-based learning, enriched by active community engagement that prepares an increasing number of students from all walks of life to succeed in a diverse society.

Core Values

- **Collegiality:** We treat each other with respect and work together in a spirit of inclusiveness, collaboration and teamwork to serve others and reach common goals.
- **Excellence:** We give our best effort and seek continuous improvement in all our activities.
- **Innovation:** We are open to new ideas and creative methods for solving problems.
- **Integrity:** We promote ethical behavior, taking responsibility for our attitudes, actions and results.
- **Transparency:** We support open, honest and continuous communication.

Strategic Priorities

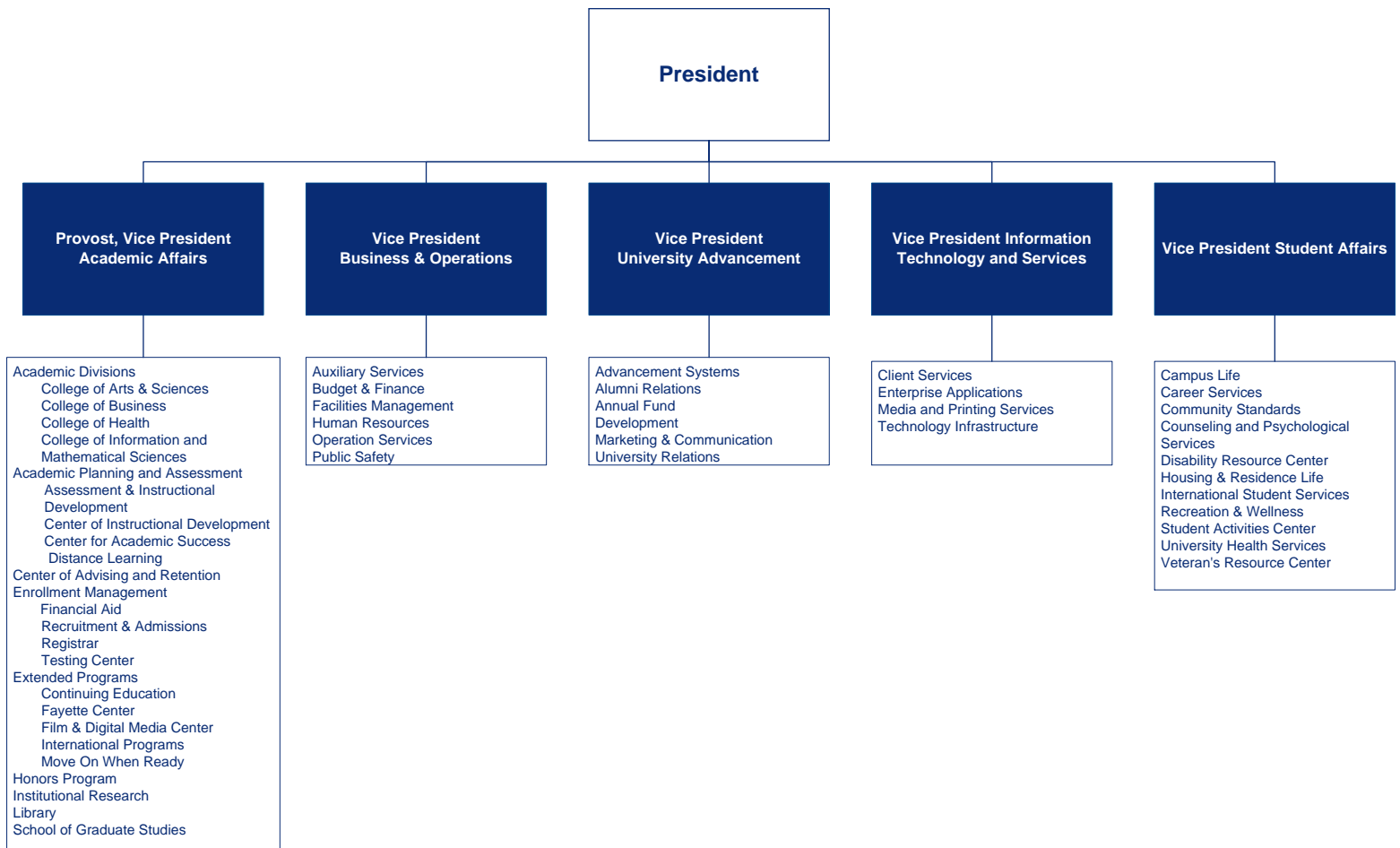
Clayton State University is committed to:

1. Increase enrollment, retention, and graduation rates
2. Increase external funding
3. Build brand through community engagement and program development focused on career preparation and success
4. Promote the brand through an integrated marketing communication program
5. Advance innovation in experiential teaching styles, methods of delivery and research
6. Continue investing in infrastructure improvements

Source: Clayton State University's Strategic Plan <http://www.clayton.edu/strategic-plan-2022>

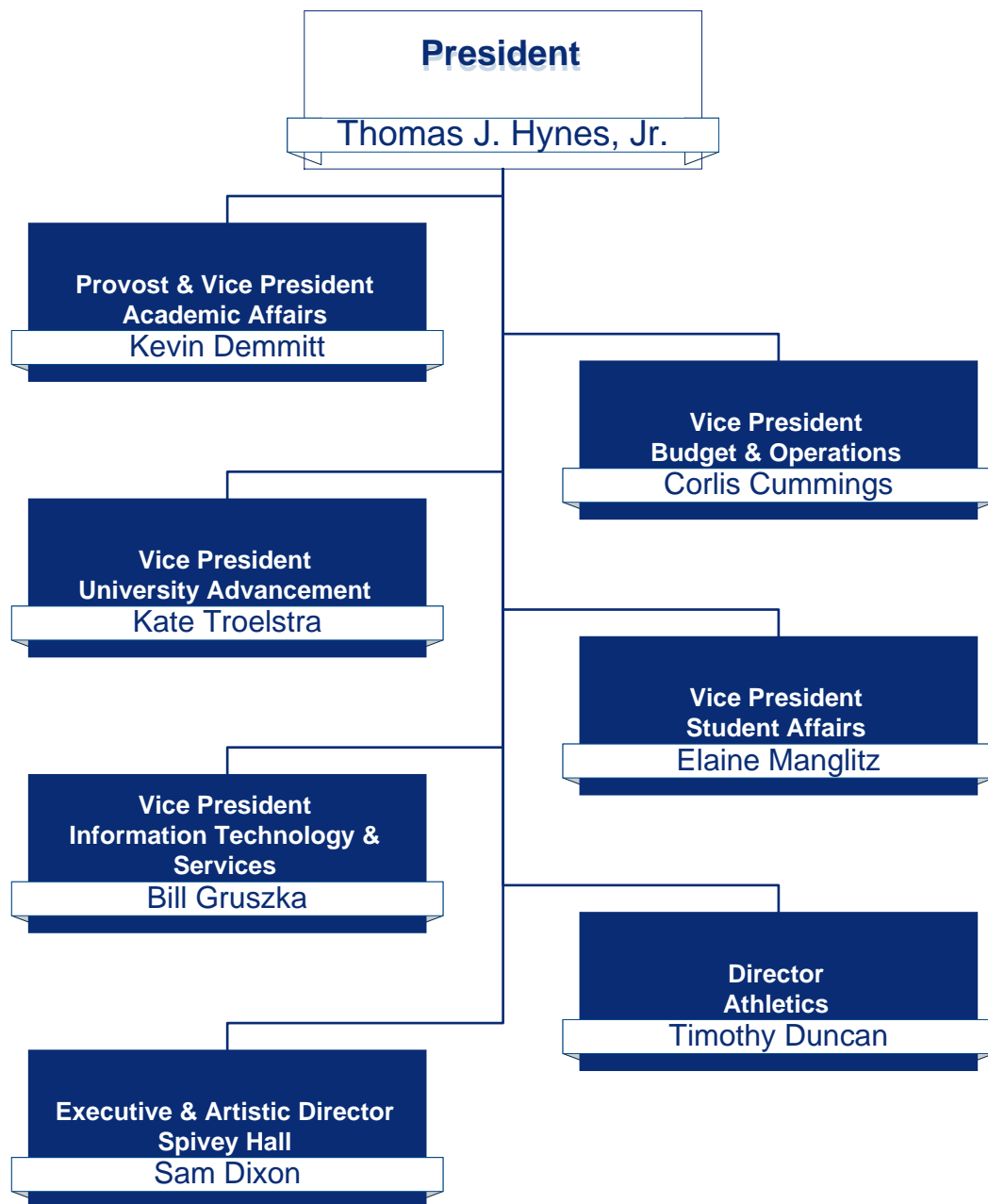
Organization Charts for the Upcoming Fiscal Year

Effective 7/1/2017



President's Cabinet

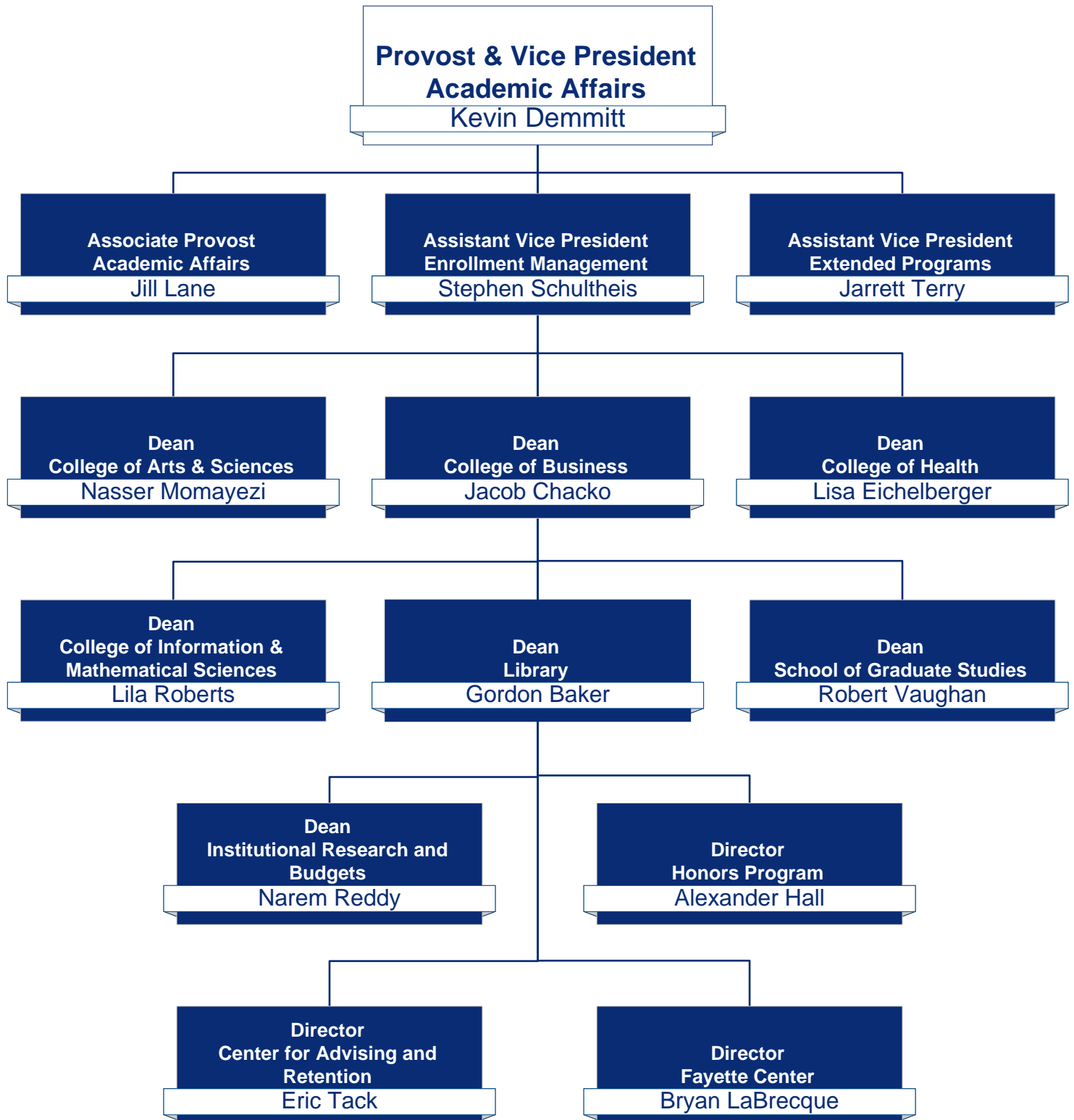
Effective 7/1/2017



Provost Level Organization Charts for Upcoming Fiscal Year

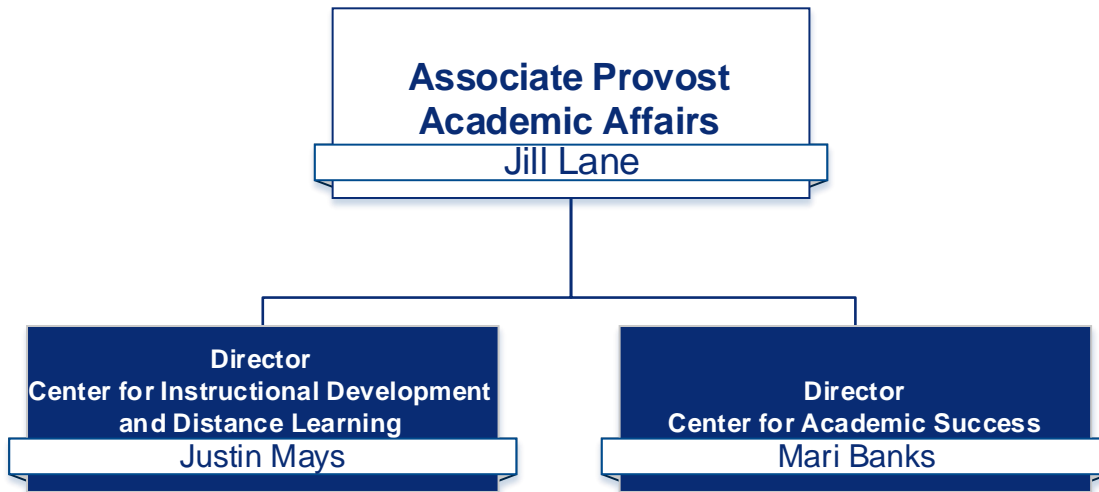
Administrators & Deans

Effective 7/1/2017



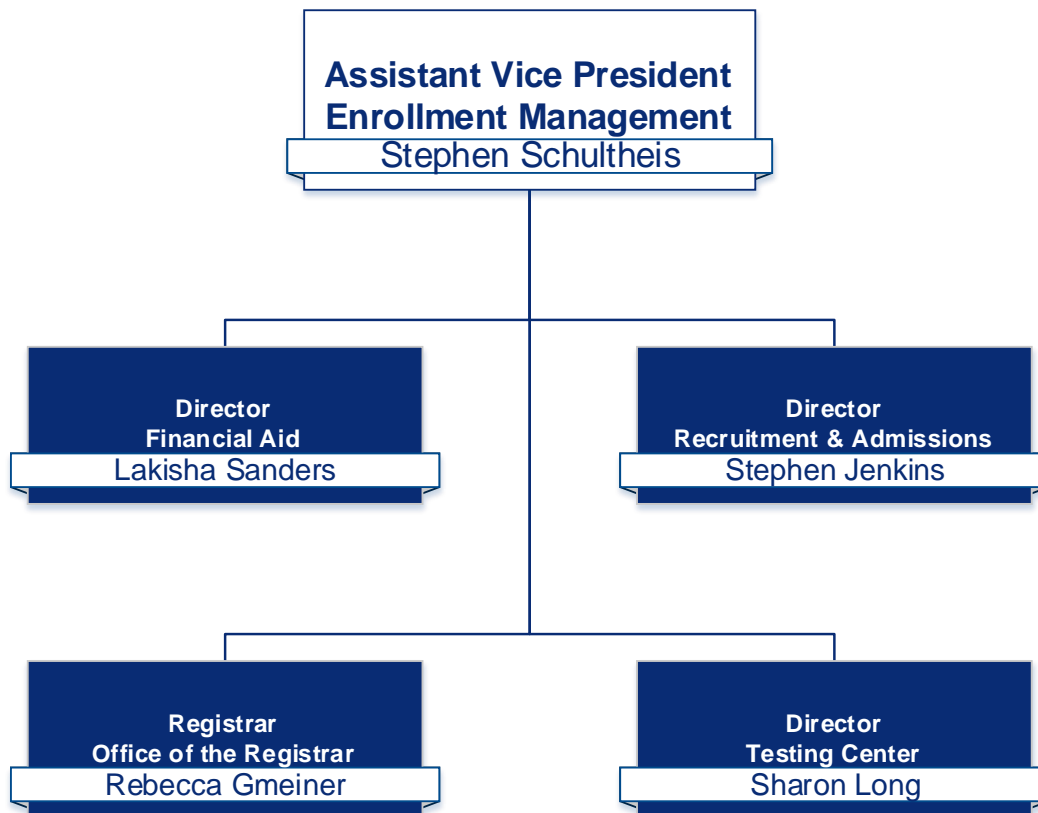
Academic Planning and Assessment

Effective 7/1/2017



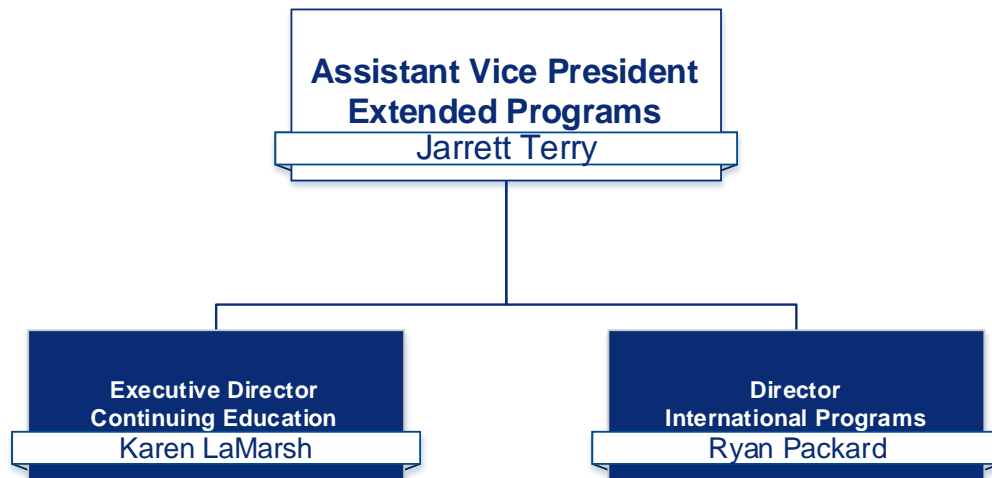
Enrollment Management

Effective 7/1/2017



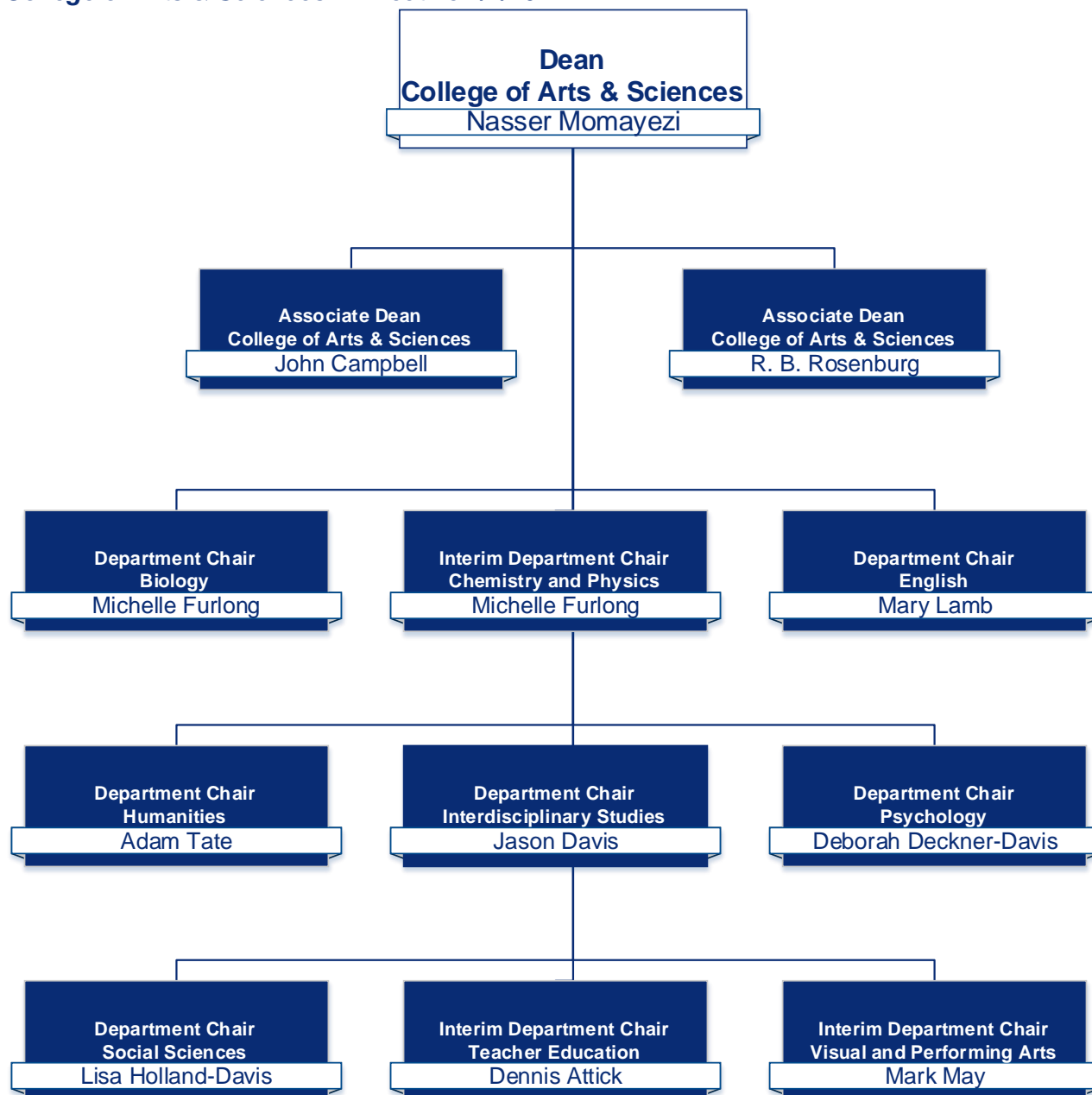
Extended Programs

Effective 7/1/2017

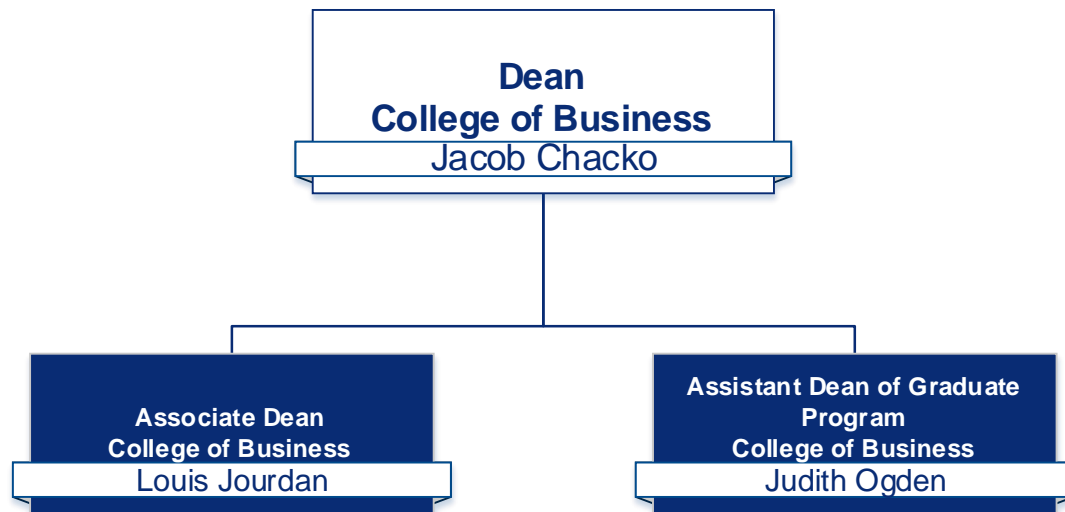


Undergraduate Academics

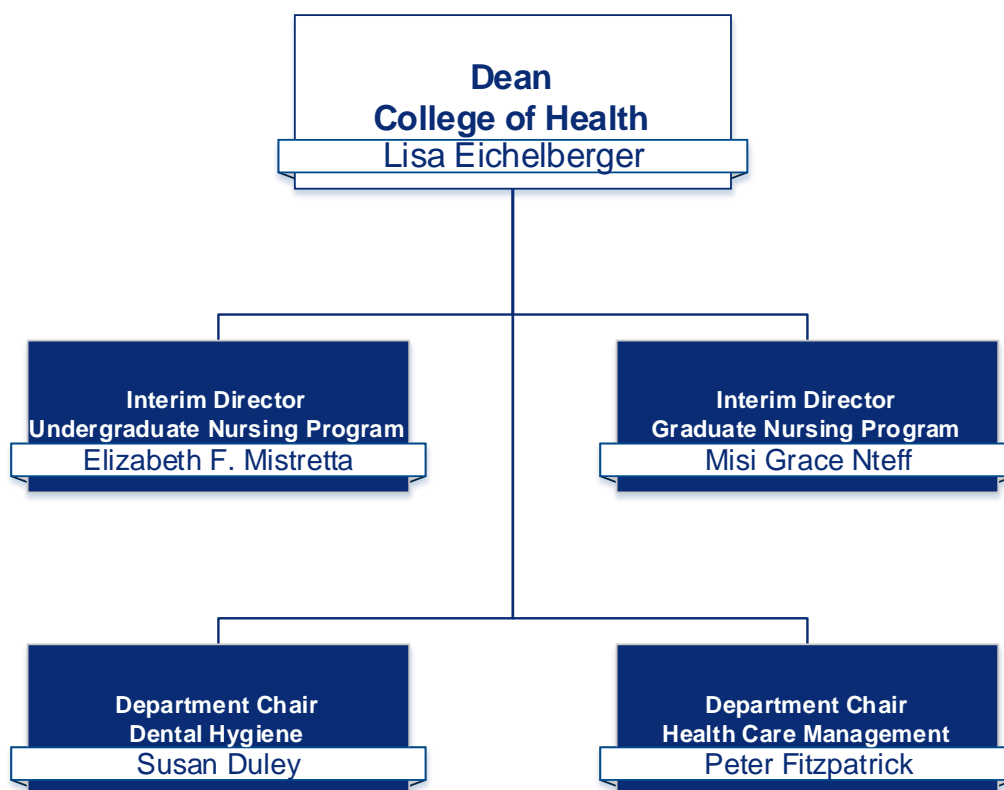
College of Arts & Sciences – Effective 7/1/2017



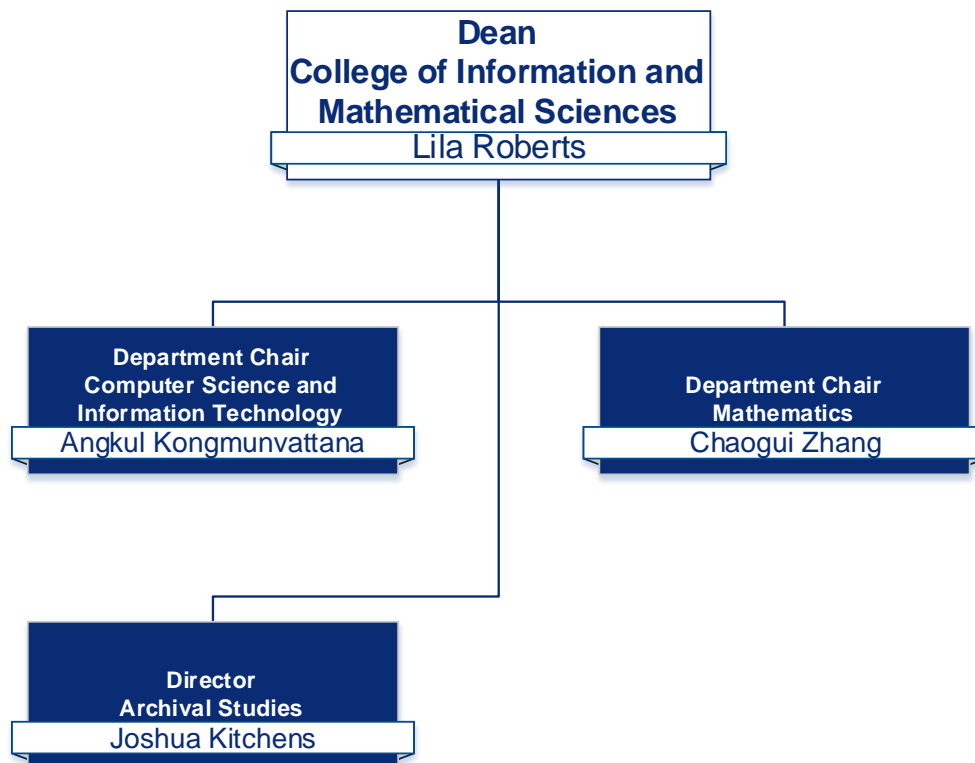
College of Business – Effective 8/1/2017



College of Health – Effective 7/1/2017



College of Information & Mathematical Sciences – Effective 7/1/2017



Accreditations and Approvals

Regional Accreditations

Commission on Colleges of the Southern Association of Colleges and Schools. Clayton State University is accredited by the Southern Association of Colleges and Schools Commission on Colleges to award associate, baccalaureate, and masters degrees. Contact the Commission on Colleges at 1866 Southern Lane, Decatur, Georgia 30033-4097 or call 404-679-4500 for questions about the accreditation of Clayton State University. Direct all other queries about programs, services, or admissions directly to Clayton State University, (678) 466-4000. For more information, visit www.clayton.edu/sacs.

National Accreditations

- Clayton State's College of Business is accredited by the Association to Advance Collegiate Schools of Business (AACSB).
- The Dental Hygiene Program is accredited by the American Dental Association Commission on Dental Accreditation (ADA).
- The Health Care Management Program holds the Association of University Programs in Health Administration Management (AUPHA) full certified undergraduate status.
- Clayton State University is an accredited institutional member of the National Association of Schools of Music (NASM).
- The Nursing program is accredited by the Commission on Collegiate Nursing Education (CCNE).
- The Paralegal Program is approved by the American Bar Association (ABA).
- The Teacher Education program is accredited by the National Council for Accreditation of Teacher Education (NCATE).

State or Local Accreditations

- The Nursing Program is approved by the Georgia Board of Nursing.
- The University's teacher preparation program is approved by the Georgia Professional Standards Commission.

Financial Aid Programs

The University has been approved for the following state and federal programs:

Veterans Administration Benefits	HOPE Scholarship & Grant Program
Federal Work Study Program	Zell Miller Scholarship
Federal Student Loans	Accel Program
Federal Pell Grants	Georgia's HERO Scholarship Program
Federal Supplemental Educational Opportunity Grants (SEOG)	Public Safety Memorial Grant
	The Student Loan Access Program

Source: Clayton State University Undergraduate Academic Catalog

Degrees and Majors Authorized

Masters

Master of Archival Studies

Master of Arts in Teaching

With Majors in:

Teaching Fields in Secondary Education

Master of Arts

With Majors in:

Liberal Studies

Master of Business Administration

Master of Health Administration

Master of Science in Criminal Justice

Master of Science in Nursing

Master of Science

With Majors in:

Clinical/Counseling Psychology

Psychology

Baccalaureate Majors

Bachelor of Arts

With Majors in:

Communication and Media Studies

English

Film Production

French Language and Literature (eMajor with Valdosta)

History

Liberal Studies

Middle Level Education

Performing Arts

Philosophy

Spanish Language and Literature (eMajor with Valdosta)

Bachelor of Applied Science

With Majors in:

Administrative Management

Homeland Security/Emergency Management

Technology Management

Bachelor of Business Administration

With Majors in:

Accounting

General Business

Management

Marketing

Logistics and Supply Chain Management

Bachelor of Information Technology

Bachelor of Science

With Majors in:

Biology

Chemistry

Computer Science

Criminal Justice

Health Care Management

Health Fitness Management

Health Sciences

Integrative Studies

Legal Studies

Mathematics

Political Science

Psychology and Human Services

Sociology

Bachelor of Science in Dental Hygiene

Bachelor of Science in Information

Technology

Bachelor of Science in Nursing

Bachelor of Science in Nursing, RN to BSN

Associate

Associate of Arts

In:

Core Curriculum

Film Production

Associate of Science

In:

Core Curriculum

Associate of Applied Science

In:

Information Technology

Paralegal Studies

One Year Certificate

Paralegal Studies

Baccalaureate Minors

African American Studies
Art
Aviation Administration
Biology
Business
Business Economics
Chemistry
Communication and Media Studies
Computer Science
Corporate Communication
Criminal Justice
Dance
Education Specialties
English
Entrepreneurship & Innovation
Film
Finance
Forensic Science

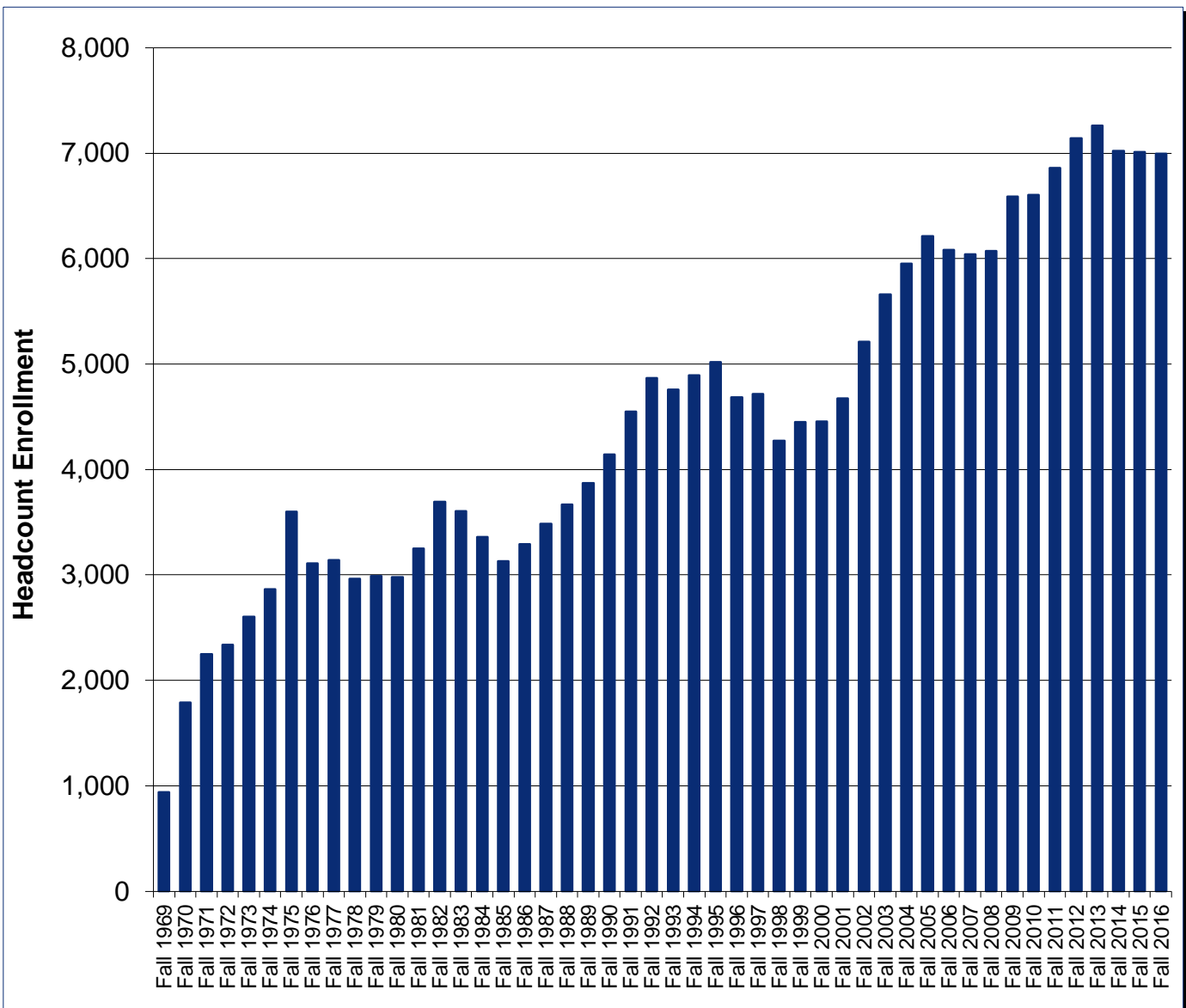
French
Health & Fitness Management
History
Homeland Security/Emergency Management
Information Technology
Legal Studies
Marketing
Mathematics
Music
Philosophy
Physics
Political Science
Psychology
Sociology
Spanish
Supply Chain Management
Theatre
Women's and Gender Studies

Source(s): USG Degrees and Majors Authorized for Clayton State University, Clayton State University Undergraduate Academic Catalog

Fall Enrollment History and Academic Highlights

Year	Total	Annual % Change	Significant Developments of the Year
Fall 1969	942		Initial year as Clayton Junior College
Fall 1970	1,789	90%	
Fall 1971	2,250	26%	Accredited by SACS
Fall 1972	2,339	4%	
Fall 1973	2,604	11%	
Fall 1974	2,865	10%	
Fall 1975	3,598	26%	
Fall 1976	3,107	-14%	
Fall 1977	3,139	1%	
Fall 1978	2,963	-6%	
Fall 1979	2,990	1%	
Fall 1980	2,977	0%	
Fall 1981	3,248	9%	Established School of Technology
Fall 1982	3,692	14%	
Fall 1983	3,603	-2%	
Fall 1984	3,358	-7%	
Fall 1985	3,131	-7%	Granted Senior College Status
Fall 1986	3,290	5%	
Fall 1987	3,484	6%	Opened first off-campus facility in Jonesboro
Fall 1988	3,667	5%	
Fall 1989	3,869	6%	Awarded First Bachelor's Degree
Fall 1990	4,142	7%	Opened Continuing Education Center
Fall 1991	4,548	10%	Opened Spivey Hall
Fall 1992	4,866	7%	
Fall 1993	4,760	-2%	
Fall 1994	4,895	3%	
Fall 1995	5,020	3%	
Fall 1996	4,687	-7%	
Fall 1997	4,714	1%	
Fall 1998	4,274	-9%	
Fall 1999	4,449	4%	
Fall 2000	4,456	0%	
Fall 2001	4,675	5%	
Fall 2002	5,212	11%	
Fall 2003	5,661	9%	Opened Fayette County Higher Education Center
Fall 2004	5,954	5%	
Fall 2005	6,212	4%	
Fall 2006	6,081	-2%	Graduate Status Granted
Fall 2007	6,043	-1%	
Fall 2008	6,074	1%	Opened first campus housing building
Fall 2009	6,587	8%	
Fall 2010	6,604	0%	
Fall 2011	6,860	4%	
Fall 2012	7,140	4%	
Fall 2013	7,261	2%	

Fall 2014	7,022	-3%	
Fall 2015	7,012	0%	Opened the Lakeview Discover and Science Center
Fall 2016	6,996	0%	



Source(s): USG Semester Enrollment Reports, University Relations, Clayton State University

Year In Review

University Rankings, Accolades and Accomplishments

Rankings

#12 among Atlanta's 25 Largest Colleges and Universities for 2016. The University ranked #13 in the previous year. – *Atlanta Business Chronicle Book of Lists*

Among the nation's top 140 universities in the South in the 2017 Best College rankings. – *U.S. News & World Report 2017 Best Colleges*

#1 in Best Value in Georgia Higher Education and among the Top Ten Regional Colleges and Universities in the state. The magazine refers to the University as a "treasure." – *James Magazine*

#22 among colleges with the Best Campus Security 2016. – *Best College Reviews*

Among "Top 150 Workplaces in Atlanta" for the 6th consecutive year, and the only college or university to be ranked among the Top 25 Large Companies at #13. It was the only institution of higher education to make that list. – *Atlanta Journal-Constitution Top 150 Workplaces In Atlanta*

Chosen as a top school for offering a supportive educational environment to active service members and veterans. – *2017 Military Advanced Education & Transition Guide to Colleges & Universities*

#12 on the list of "50 Best Colleges for Adult Education." – *Great Value College 2017-2018 Rankings*

#18 on the list of the top 30 Most Beautiful College Campuses in Georgia. The University was noted for retaining a park-like feel and being a "tranquil campus away from the urban hustle." – *30 Most Beautiful College Campuses by LendEDU*

#13 among colleges and universities in Georgia for its online degree programs. – *College Choice Rankings*

Named one of the nation's Most Affordable Colleges for Incoming Freshmen with a Financial Need. The University was ranked no.178 in the nation. – *Student Loan Report*

Accomplishments

President Tim Hynes named one of 100 Most Influential Georgians

University President Dr. Tim Hynes was named one of 100 Most Influential Georgians of 2017 by Georgia Trend magazine for displaying leadership and influencing everyday citizens.

Clayton State University launches strategic plan

On Nov. 15th, Clayton State University unveiled Strategic Plan 2022, a five-year plan to increase enrollment, graduation and retention rates, as well as make critical infrastructure investments and expand community engagement.

Clayton State wins \$5 million grant to help African-American students

Clayton State University received a \$4.8 million, 5-year grant from the U.S. Department of Education to support the retention and graduation rates for the institution's African-American student population through the Laker Bridge to Completion Program.

Clayton State University launches \$12 million comprehensive campaign

On April 25th, Clayton State University launched "Greater In Mind," the University's first-ever comprehensive campaign. The four-year campaign seeks to raise funding to offer greater financial aid support for the University's students.

Science Center earns award for construction management

The Lakeview Science and Discovery Center earned the 2016 Project Achievement Award from the Construction Management Association of America's South Atlantic Chapter for achievement in the practice of construction management.

University completes five-year process to establish single stream recycling program

Clayton State University completed its five-year process to become a more sustainable institution by implementing a single stream recycling system, which increases the amount of recycling on campus.

Clayton State launches child care assistance program

Clayton State is one only three universities selected to partner with Quality Care for Children to receive \$1.6 million to launch BOOST, a child care assistance program to lessen the financial burden of child care costs for juniors and seniors.

Clayton State awarded drug and alcohol education grant

In November, the Governor's Office of Highway Safety awarded Clayton State with a Young Adult Grant to continue offering drug and alcohol education programming on campus. The University has received the grant for the past six years.

Exceeded goal raising more than \$140k in 24-hours for Day of Giving

On March 1st 2016, Clayton State hosted #Give4Dreams, its day of giving. The 24-hour fundraising initiative raised \$143,481 — exceeding its goal at 110 percent. From study abroad programs, to scholarships, to conferences and emergency funds for students, these gifts will have an immediate and life-changing impact on our students.

2016 Tree Campus USA

For the fourth consecutive year, Clayton State University has been recognized for its commitment to effective urban forest management and tree conservation efforts, earning the 2016 Tree Campus USA recognition.

College of Arts and Sciences Rankings

Among Top 5 in Georgia for its Education Degree. Ranking based on cost, student-to-faculty ratio, acceptance rate, return on investment, and graduation rate. — *Annual Best Teaching Colleges in Georgia Review*

#4 among the list of 2017 Most Affordable Online Colleges for English for students seeking an online Bachelor of Arts in English degree. — *SR Education Group*

Awards

Clayton State's Model UN Team wins two national awards

Rose Pollion, won for Outstanding Position Paper in the General Assembly First Committee delegation, while the Model UN team earned an honorable mention for participation.

Faculty Achievements

Dr. Aubrey Dyer, assistant professor of chemistry, has been selected as a University System of Georgia Scholarship of Teaching and Learning Fellow for the 2017-2018 year. She was recognized for demonstrating experience and interest in teaching and student learning.

Dr. Rodger Bates, professor of Sociology, was honored as the recipient of the 2016 GSA Meritorious Service Award at the Georgia Sociological Association Meetings in October. Bates was recognized for his contributions to scholarship in support of the Journal of Public and Professional Sociology. He has three of the top five most accessed articles in the journal, and his contributions have been viewed in more than 30 countries.

Dr. Joshua Meddaugh, assistant professor of political science, won the 2015 McBrayer Award for best paper presented at the 2015 Georgia Political Science Annual Conference.

The Gene Hatfield Awards, given out annually by the College of Arts and Sciences to professors who demonstrate excellence in teaching and service, were awarded to three professors. Aubrey Dyer, assistant professor of chemistry, earned the 2016-2017 Scholar of the Year Award. The College's Teacher of the Year Award was bestowed on Erica Dotson, associate professor of teacher education and French. And Michelle Furlong, department chair and professor of biology, was honored with the Gene Hatfield Award of Service.

College of Business

Rankings

The College of Business was ranked #7 among the top 15 business schools in the metro area with the highest enrollment in Master of Business Administration programs. – *Atlanta Business Chronicle Book of Lists*

Ranked no. 4 among the top 10 MBA programs in the country with an emphasis on human resources. The College's MBA in Human Resource Leadership earn the honor. – *2017 Leadership Excellence and Development Awards*

Earned the no. 16 spot among the 2017 Most Affordable Online Colleges for Business. – *SR Education Group*

Achievements

AACSB Accreditation Reaffirmed

College of Business maintained its business accreditation by AACSB International—The Association to Advance Collegiate Schools of Business after a rigorous assessment. AACSB Accreditation is the hallmark of excellence in business education, and has been earned by less than five percent of the world's business programs.

Staff Achievement

Alisa Kirk, Area Director for the UGA Small Business Development Center at Clayton State University, was named one of the top 25 women of Atlanta by Rolling Out Magazine.

College of Health

Rankings

#1 dental hygiene program in the 2017 Top Online Colleges for Dental Hygiene Degrees. Evaluated among colleges and universities nationwide on a number of factors including tuition rates, to determine which schools offer the best value for students. – *SR Education Group*

#22 in the 2017 Top Online Colleges for Nurse Practitioner Degrees across the nation. Recognized for offering high academic standards and a commitment to college affordability. – *SR Education Group*

Clayton State's Master of Science in Family Nurse Practitioner degree program was ranked among the top 10 most affordable online MSN-NP programs. It earned the no. 7 spot. – *NursePractitionerSchools.com*

Clayton State University was ranked in the top 50 as one of the best value colleges for its online master's in Family Nurse Practitioner program. It landed at no. 42 on the list. – *College Values Online*

Student Achievement

Dental Hygiene student Phoung Nguyen was awarded the Emile T. Fisher Scholarship for her dedication and commitment to the dental profession as she enters her last year of dental training.

Faculty Achievement

Colleen Walters, a clinical professor in the School of Nursing, was named winner of the Clinical Novice Faculty Teaching Award by the American Association of Colleges of Nursing for excellence and innovation in the teaching of nursing.

College of Information and Mathematical Sciences

Ranking

AffordableCollegesOnline.org

#1 school in the nation when it comes to having the Best Online Computer Science degree. Low cost, convenience, flexibility, and job placement were key factors in the ranking.

Student Achievement

CIMS alum Aaron Panlilio (B.S. '16), was honored as Clayton State University's representative for the University System of Georgia Chancellor's Academic Recognition Day award. He was selected for his remarkable achievements in academics and service.

Classroom innovation

The College introduced two NAO humanoid robots for programming in its classrooms. Humanoids are used to investigate human social interactions and programmed to mimic human voice and movement. This is the cutting edge of robotics being used in the classroom for learning and student engagement.

Additional Staff Achievements

The University System of Georgia named Carolina Amero, Asst. Vice President of Auxiliary & Administrative Services, Service Excellence Ambassador of the Year as part of the Chancellor's Annual Service Excellence Awards.

Sherwin James, advisor and assistant director of the Center for Advising and Retention, won the Advising Excellence Award at the annual National Academic Advising Association (NACADA) Annual Conference in October.

University Library Renovation

The University Library celebrated a \$3.8 million major renovation to the library facilities on Wednesday, January 27, 2016. The ribbon cutting ceremony unveiled a new and improved layout. The total cost of the including the addition of ten study rooms and about 13,000 square feet of space.

Awards

Clayton State University Library staff took home several awards at the 2016 Joint Conference of the Georgia Council of Media Organizations and the Southeastern Library Association last October.

Dr. Gordon Baker, Dean of Libraries, was honored with the Hal Mendelsohn Award from the Southeastern Library Association for exhibiting continual, dedicated, outstanding service to the association.

Dr. Baker, along with Heidi Benford and Barbara Dantzler were awarded the Georgia Library Association Team Award for serving as members—and Dr. Baker as co-chair—of the GLA Georgia Student Media Festival Committee.

Athletics

Peach Belt Conference West Division Championship

Clayton State's men's basketball team claimed the West Division title in the Peach Belt conference with a 71-70 victory over Montevallo. This is the first time they claimed the championship win since the 2007-08 season.

Student-athletes earn All-Academic Team honors for first time in program history
Graduate Maia Kuhnen and senior Crystal Nelson were recognized as Individual All-Academic Team selections by the U.S. Track & Field and Cross Country Coaches Association (USTFCCCA). It is the first time in program history for either the men's or women's team.

Athletics program receives largest donation in program history
The Athletics program received a \$60,000 donation from longtime partner OrthoAtlanta Orthopedics and Sports Medicine Specialists toward the renovation of the athletic training room, the largest in program history.

Spivey Hall

Spivey Hall is celebrating its 25th year with the grand Albert Schweitzer memorial Organ, a custom-made Fratelli Ruffatti pipe organ, during the 2016-2017 season.

Spivey Hall invited 2017 Grammy winning Bluegrass band, the O'Connor Band, to host a workshop for local elementary, middle and high school students, in addition to performing an evening show in the venue.

Compiled by the Office of Marketing and Communications

Legends/Mythology

Our Swans

In early 1995, Dr. Barbara G. King, an assistant professor of Reading, donated two swans to Clayton State. She apparently had gotten these two mute swans (that's the type of swan they are) from somewhere, and found she couldn't keep them on her own property. The first two swans were named Rhett and Scarlet. All was ducky until April 1997. Rhett and Scarlet nested and produced several eggs. Unfortunately, a stray dog found the nest, and Rhett was killed by the dog while defending the nest.

One egg eventually hatched. It was named, "Bonnie." However, Bonnie disappeared after a few weeks, we think the victim of a snapping turtle.

Paul Bailey of Media & Printing Services conducted a fund-raising effort of campus to buy a new swan. That effort brought Ashley, named in a campus-wide contest, to Clayton State in June 1997. He seemed to get along swimmingly with Scarlet. Sadly, though, Scarlet died in July 1997, the victim of lead poisoning from swallowing a fisherman's sinker. (This is why fishing was eventually banned from everywhere but the dam area at the far end of the lake.)

Paul jumped back in, raised more money, made more phone calls, and then brought another female swan to campus -- Melanie (the name the result of another campus-wide poll). Like the GWTW Melanie, this bird proved somewhat sickly, and died (of natural causes, we think) in January 1999. Next up was "Belle" who joined us in February 1999.

Belle and Ashley hatched four eggs on Mother's Day 2000, which was just after the lake was officially named "Swan Lake." Dr. Brad Rice of Academic Affairs and John Shiffert of University Relations were instrumental in the lake-naming effort. That happened in an impressive ceremony on March, 20, 2000, presided over by Mike Vollmer.

Unfortunately, Ashley died shortly after the eggs were hatched in June 2000, also of lead poisoning from a fisherman's sinker. Three of the four cygnets died... the one survivor continues to float around Swan Lake with Belle.

In April 2002, the swans produced eggs once again and were protectively fenced from the ongoing University Center construction and foot traffic around the lake. After the mother swan's many long, hot days on the nest, the eggs failed to hatch.

Visit the University Legends webpage for updates on the continuing saga of Our Swans.

Our Mascot

It's no mystery that Clayton State is home to a diverse setting of students, but deep within the walls of this university a mystery, a secret is hiding, a secret that remains to be solved.

In 1969, Clayton Junior College was established and along with the college was a beautiful setting of trees and eight gorgeous lakes. Now, the difficulty when the college was built was that it was in mid-January and Atlanta was in the middle of one of the worst winter storms in its history. By the time construction was able to begin several of the lakes were just beginning to lose their icy covers.

When the construction crews were digging to make room for the dam, an amazing discovery was found deep below the surface. What looked to be a large piece of rock was actually a large chunk of ice. No one thought twice about and just assumed it was ice and left it at that.

With the work picking back up and the huge ice rock lying off to the side, no one noticed that the ice began to crack. Upon returning to the dam where the ice had been left, the workers were astonished to find the ice had split in two and a hollow inside was left, as if something had hatched from within.

Immediately, questions began to arise and concerns shot across the community. “What had been let loose?”... “Should we be afraid?” After the initial shock of what may have happened had worn off, life on the construction site resumed back to normal.

Several years passed by until this story was brought up again. In 1990, a strange string of occurrences began to happen. Several of the ducks around the campus were turning up dead, looking as if some animal had feasted them on. When the campus police was filming a portion of the duck crime scene, they saw on the tape that a large, shadowy creature was walking amongst the trees and disappeared in the lake. Now, what had the police concerned was what animal could walk upright and then live underwater as well. Chaos began to stir up around the school, and several media outlets were clamoring to get a piece of this story. Rewards were offered to any student who could capture this beast on film, and anyone who could retrieve this thing alive would be granted immediate completion of a bachelor’s degree.

Over the years hundreds of photos and video footage has turned up claiming to feature this famous creature of Clayton State, who has come to be known as Loch. While no solid proof has been offered to verify that this creature actually exists, many claim to have encountered Loch. Based on their accounts they say that he is in reality friendly, and just wants to interact with students, faculty and staff. This would explain Loch’s many sightings at Soccer and Basketball games and several other university functions.

So, what is this “Loch?” Is it a beast? Is it a friend? We may never find out the answers to all of our many questions, but it is worth the risk to find out. Is this the reason why this elusive creature has become the mascot of our university? Many students think it is, and maybe you should as well.

Source: [Legends, About Clayton State](#)

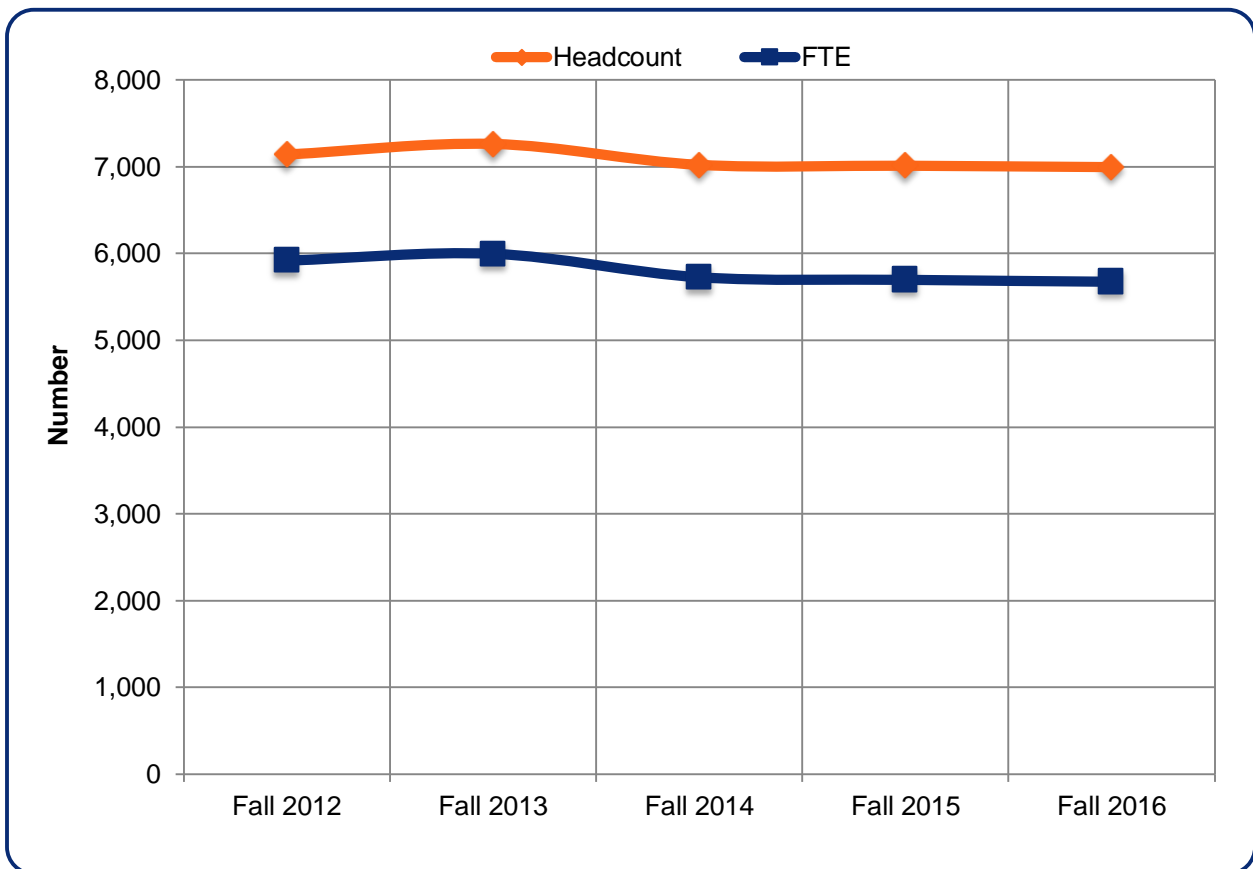
Our Students



Five Year Enrollment at Clayton State University

Fall Semesters

	Fall 2012	Fall 2013	Fall 2014	Fall 2015	Fall 2016
Headcount	7,140	7,261	7,022	7,012	6,996
FTE	5,920	5,999	5,729	5,699	5,677

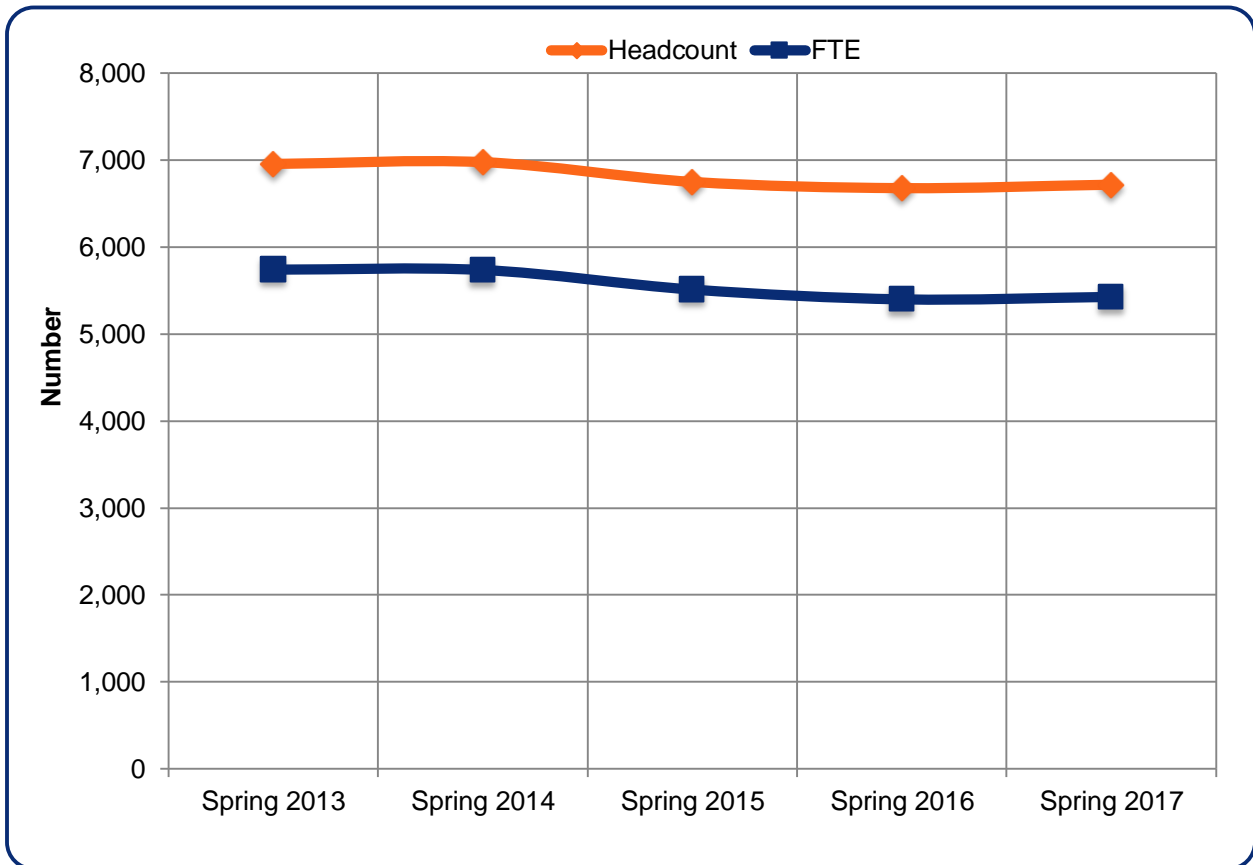


Source: USG Semester Enrollment Reports

Five Year Enrollment at Clayton State University (continued)

Spring Semesters

	Spring 2013	Spring 2014	Spring 2015	Spring 2016	Spring 2017
Headcount	6,955	6,976	6,747	6,675	6,715
FTE	5,736	5,735	5,511	5,399	5,427

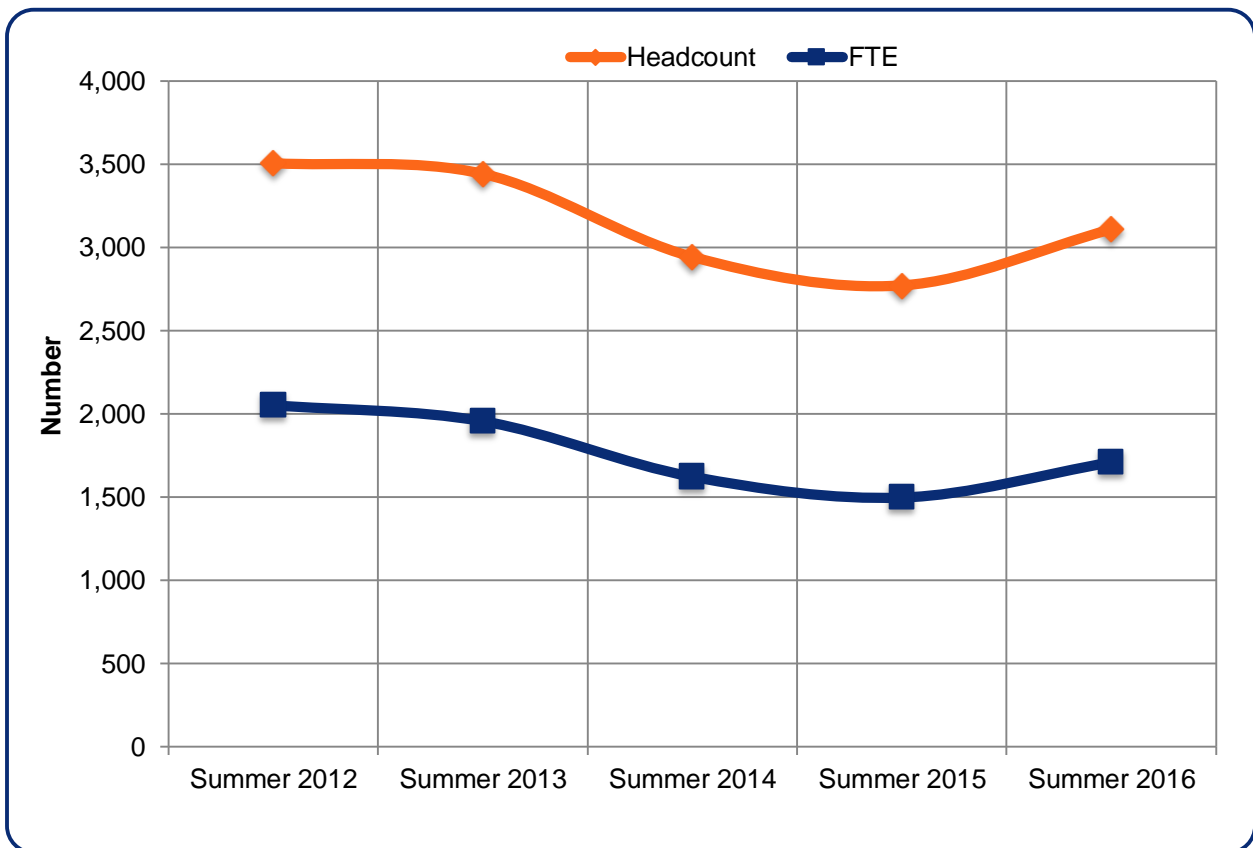


Source: USG Semester Enrollment Reports

Five Year Enrollment at Clayton State University (continued)

Summer Semesters

	Summer 2012	Summer 2013	Summer 2014	Summer 2015	Summer 2016
Headcount	3,508	3,444	2,943	2,771	3,110
FTE	2,054	1,958	1,624	1,499	1,711

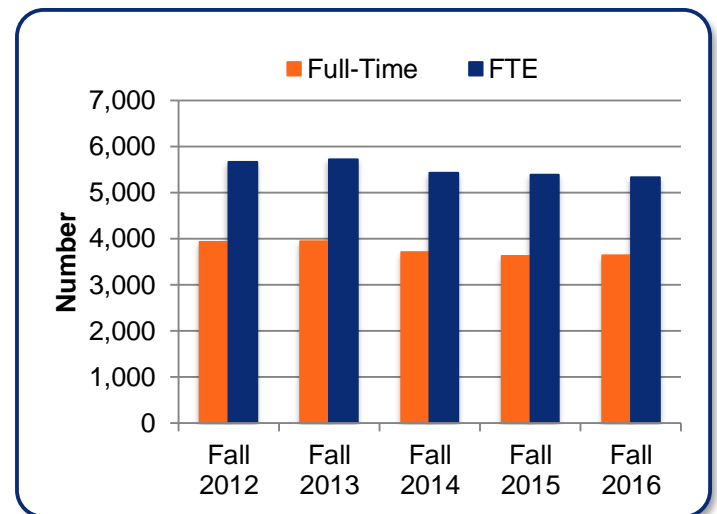


Source: USG Semester Enrollment Reports

Fall Semester Full-Time Equivalency

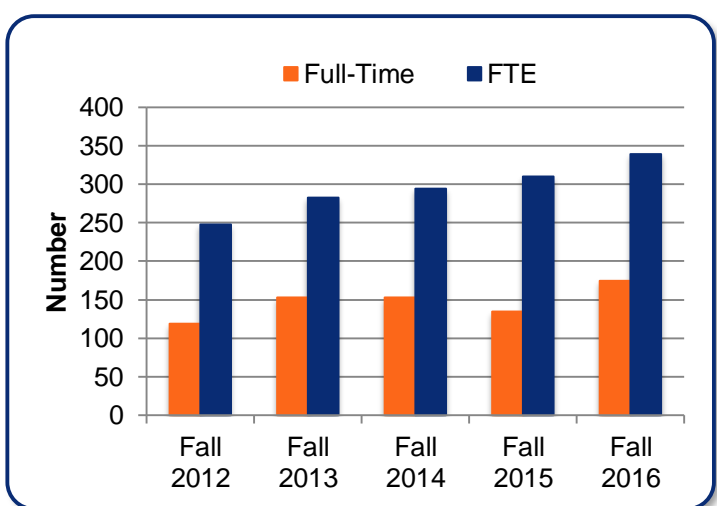
Undergraduate

	Full Time	Part Time	Total	FTE
Fall 2012	3,929	2,879	6,808	5,672
Fall 2013	3,939	2,954	6,893	5,716
Fall 2014	3,713	2,919	6,632	5,434
Fall 2015	3,626	2,961	6,587	5,389
Fall 2016	3,636	2,919	6,555	5,339



Graduate

	Full Time	Part Time	Total	FTE
Fall 2012	119	213	332	248
Fall 2013	153	215	368	283
Fall 2014	153	237	390	294
Fall 2015	135	290	425	310
Fall 2016	175	266	441	338

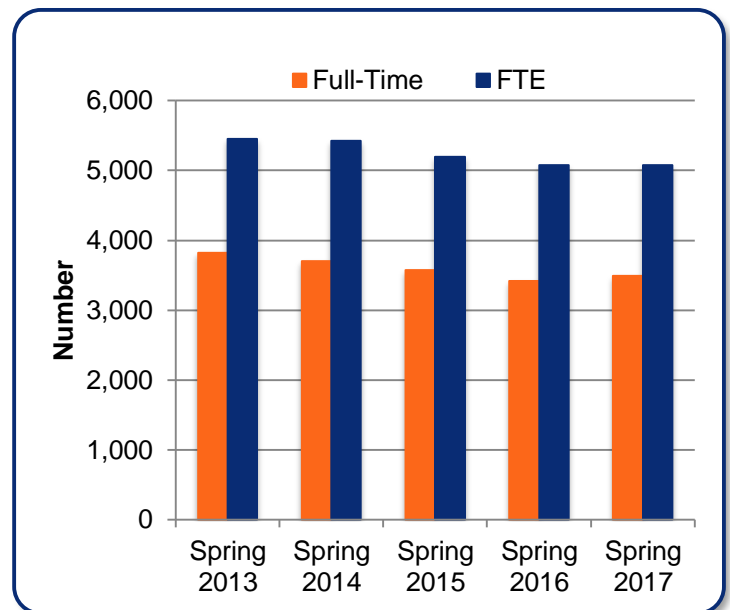


Source: Banner SIS

Spring Semester Full-Time Equivalency

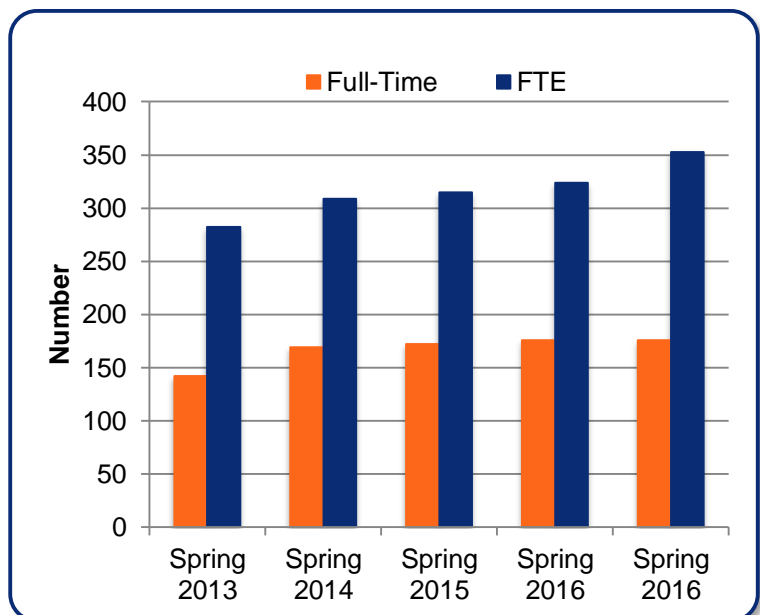
Undergraduate

	Full-Time	Part-Time	Total	FTE
Spring 2013	3,818	2,772	6,590	5,457
Spring 2014	3,700	2,879	6,579	5,427
Spring 2015	3,576	2,771	6,347	5,197
Spring 2016	3,416	2,832	6,248	5,075
Spring 2017	3,487	2,764	6,251	5,074



Graduate

	Full-Time	Part-Time	Total	FTE
Spring 2013	142	223	365	282
Spring 2014	169	228	397	309
Spring 2015	172	228	400	315
Spring 2016	176	251	427	324
Spring 2017	176	288	464	353

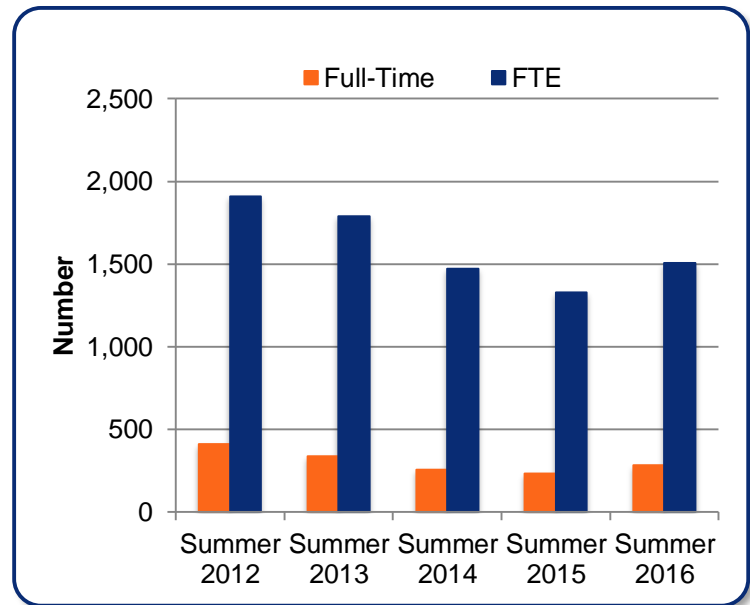


Source: Banner SIS

Summer Semester Full-Time Equivalency

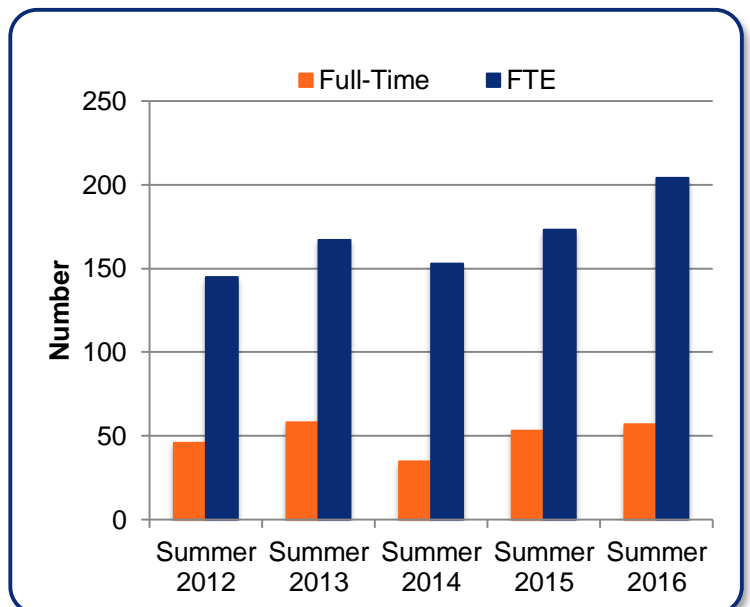
Undergraduate

	Full Time	Part Time	Total	FTE
Summer 2012	410	2,889	3,299	1,908
Summer 2013	337	2,857	3,194	1,791
Summer 2014	258	2,442	2,700	1,473
Summer 2015	235	2,276	2,511	1,327
Summer 2016	284	2,525	2,809	1,508



Graduate

	Full Time	Part Time	Total	FTE
Summer 2012	46	163	209	145
Summer 2013	58	192	250	167
Summer 2014	35	208	243	153
Summer 2015	53	207	260	173
Summer 2016	57	244	301	204

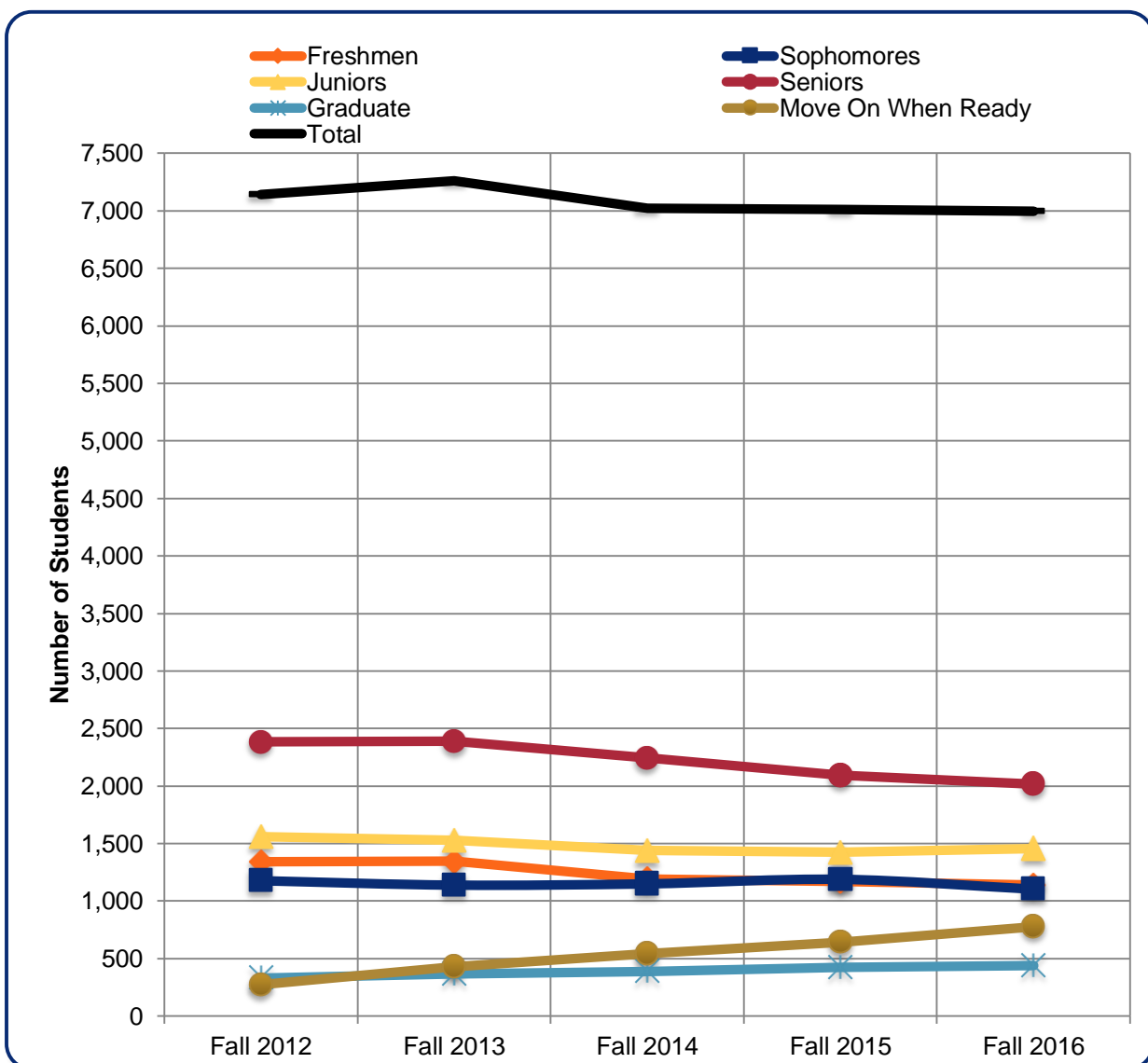


Source: Banner SIS

Enrollment by Student Status

Fall Semesters

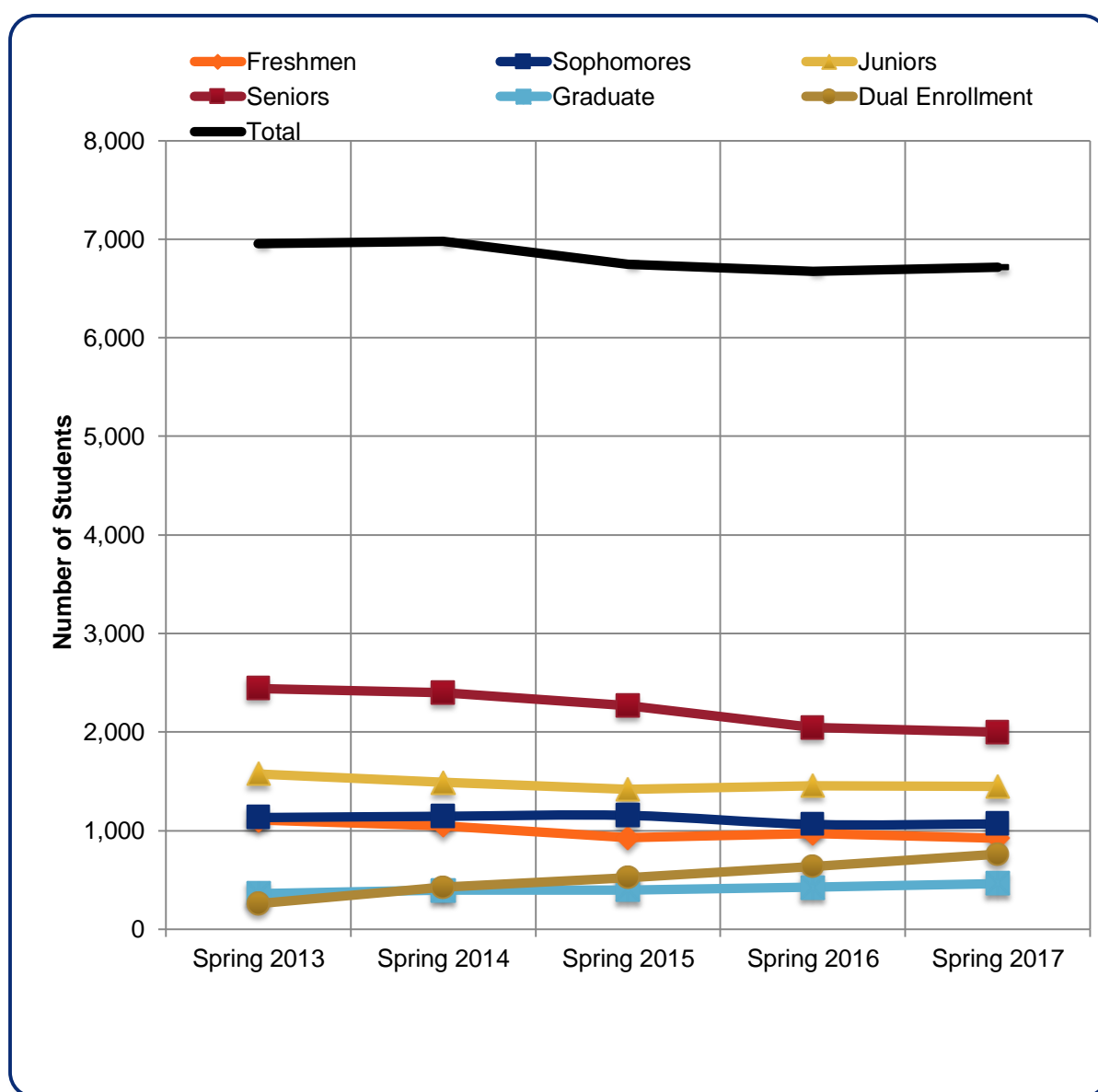
	Fall 2012	Fall 2013	Fall 2014	Fall 2015	Fall 2016
Freshmen	1,344	1,347	1,193	1,172	1,142
Sophomores	1,178	1,140	1,151	1,190	1,105
Juniors	1,560	1,529	1,439	1,425	1,458
Seniors	2,383	2,388	2,243	2,092	2,019
Graduate	332	368	390	425	441
Move On When Ready	271	430	545	644	777
Other	72	59	61	64	54
Total	7,140	7,261	7,022	7,012	6,996



Source: USG Semester Enrollment Reports

Spring Semesters

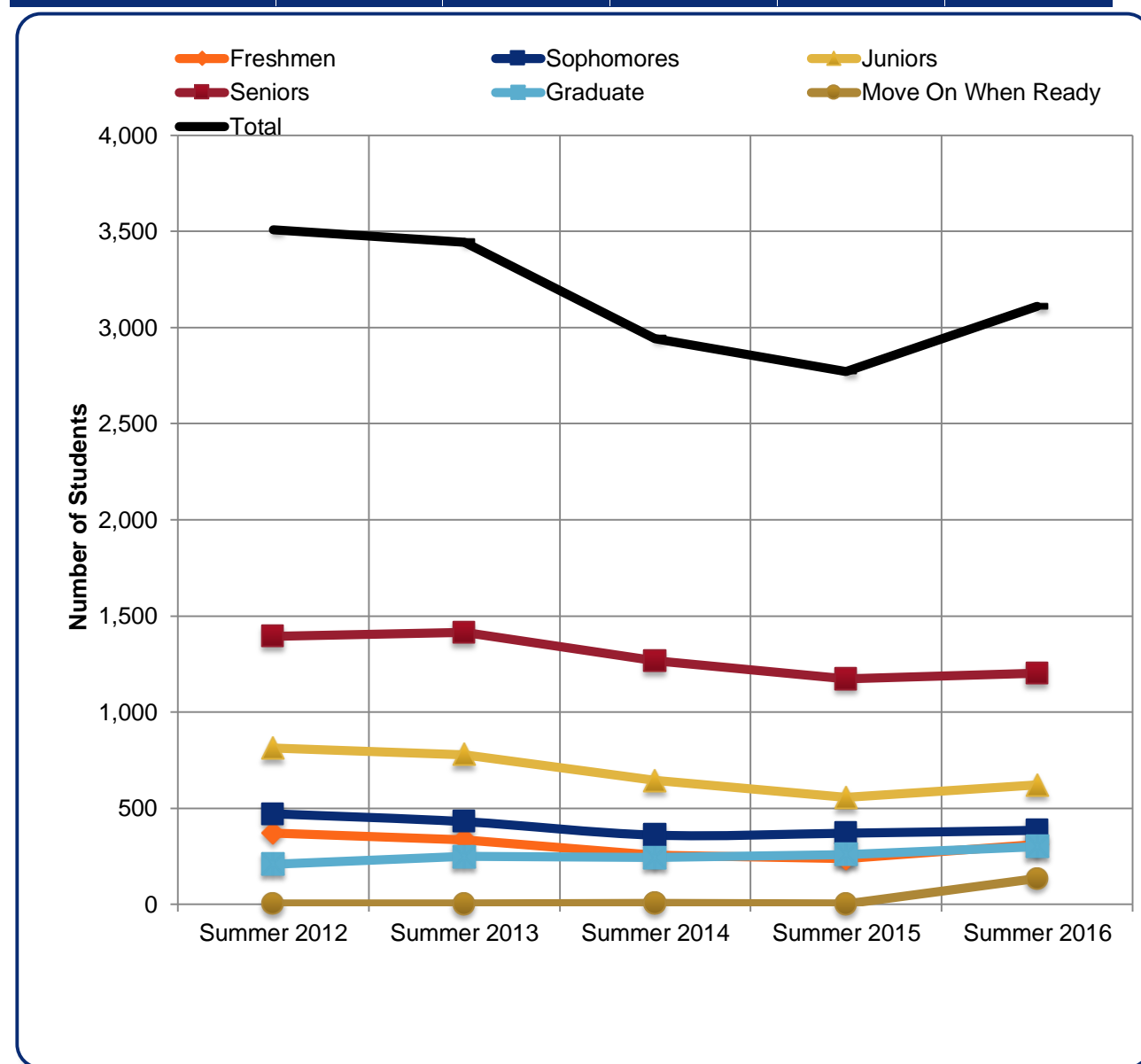
	Spring 2013	Spring 2014	Spring 2015	Spring 2016	Spring 2017
Freshmen	1,108	1,049	928	973	923
Sophomores	1,133	1,146	1,155	1,062	1,067
Juniors	1,575	1,491	1,417	1,457	1,448
Seniors	2,443	2,399	2,267	2,047	1,998
Graduate	365	397	400	427	464
Dual Enrollment	258	426	525	637	760
Other	73	68	55	72	55
Total	6,955	6,976	6,747	6,675	6,715



Source: USG Semester Enrollment Reports

Summer Semesters

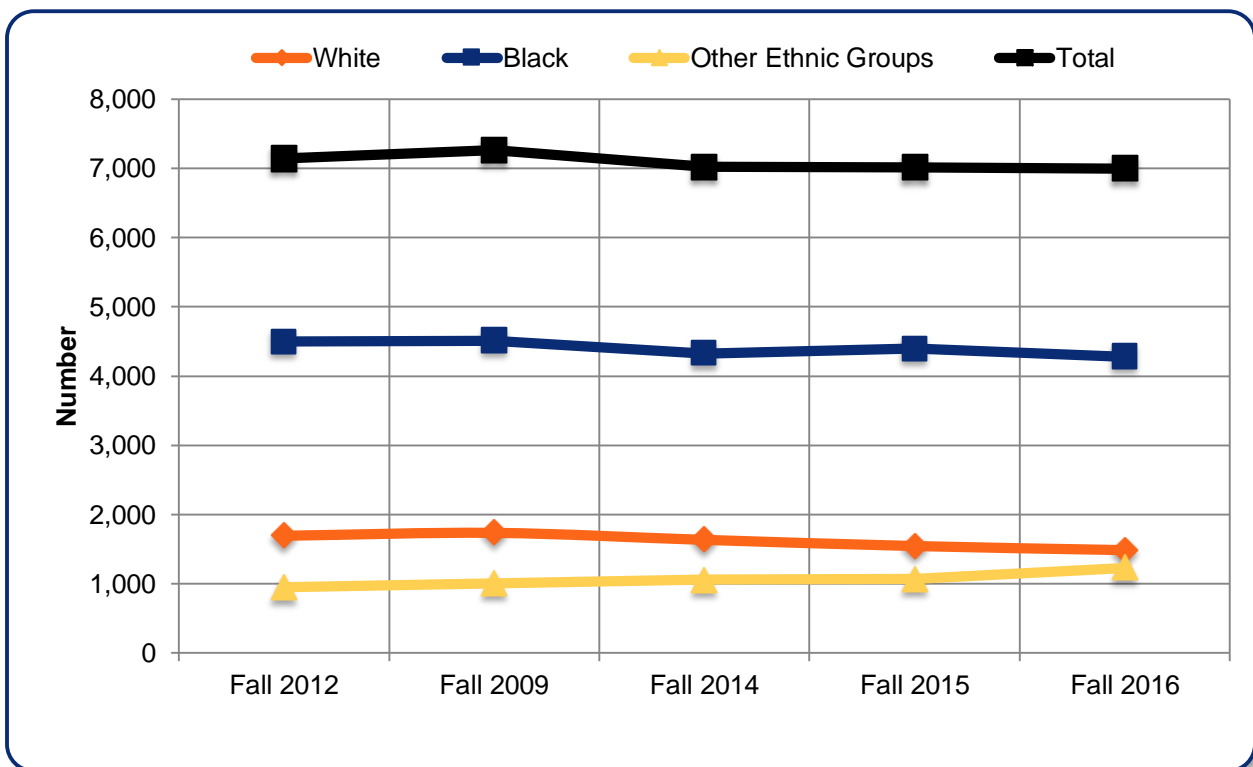
	Summer 2012	Summer 2013	Summer 2014	Summer 2015	Summer 2016
Freshmen	372	336	255	239	311
Sophomores	471	430	360	370	385
Juniors	812	779	645	556	621
Seniors	1,395	1,414	1,266	1,172	1,202
Graduate	209	250	243	260	301
Move On When Ready	3	1	6	2	135
Other	246	234	168	172	155
Total	3,508	3,444	2,943	2,771	3,110



Source: USG Semester Enrollment Reports

Fall Enrollment by Ethnic Group

	Fall 2012	Fall 2013	Fall 2014	Fall 2015	Fall 2016
Am. Indian or Alaskan Native	11	11	13	16	12
Asian	321	379	397	386	450
Black	4,496	4,511	4,327	4,398	4,283
Hispanic (of any race)	149	83	184	247	358
Native Hawaiian or Other Pacific Islander	7	6	4	8	8
Two or More Races	182	204	197	179	195
White	1,697	1,740	1,636	1,544	1,483
Unknown	277	327	264	234	207
Total Enrollment	7,140	7,261	7,022	7,012	6,996
% Minority	72.4	71.5	72.9	74.6	75.8



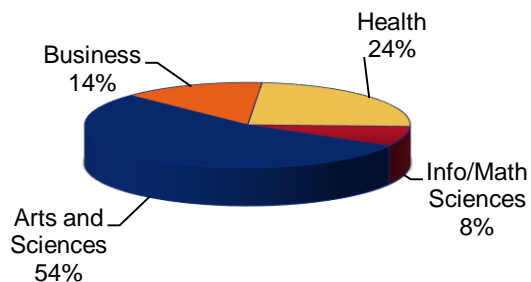
Other Ethnic Groups includes Am. Indian or Alaskan Native, Asian, Hispanic (of any race), Native Hawaiian or Other Pacific Islander, Two or More Races, and Unknown.

Source: USG Semester Enrollment Reports

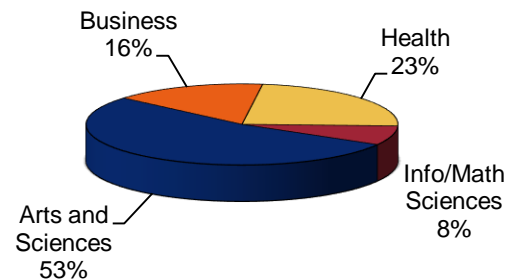
Enrollment by Gender and College

College	Male	Female	Total	Percent of Total	Male Percent	Female Percent
Fall 2016						
Arts and Sciences	1,162	2,609	3,771	53.9	30.8	69.2
Business	402	590	992	14.2	40.5	59.5
Health	230	1,461	1,691	24.2	13.6	86.4
Info/Math Sciences	394	148	542	7.7	72.7	27.3
Total	2,188	4,808	6,996	100.0	31.3	68.7
Spring 2017						
Arts and Sciences	1,108	2,447	3,555	52.9	31.2	68.8
Business	409	655	1,064	15.8	38.4	61.6
Health	219	1,360	1,579	23.5	13.9	86.1
Info/Math Sciences	364	153	517	7.7	70.4	29.6
Total	2,100	4,615	6,715	100.0	31.3	68.7

Fall 2016 Enrollment by College



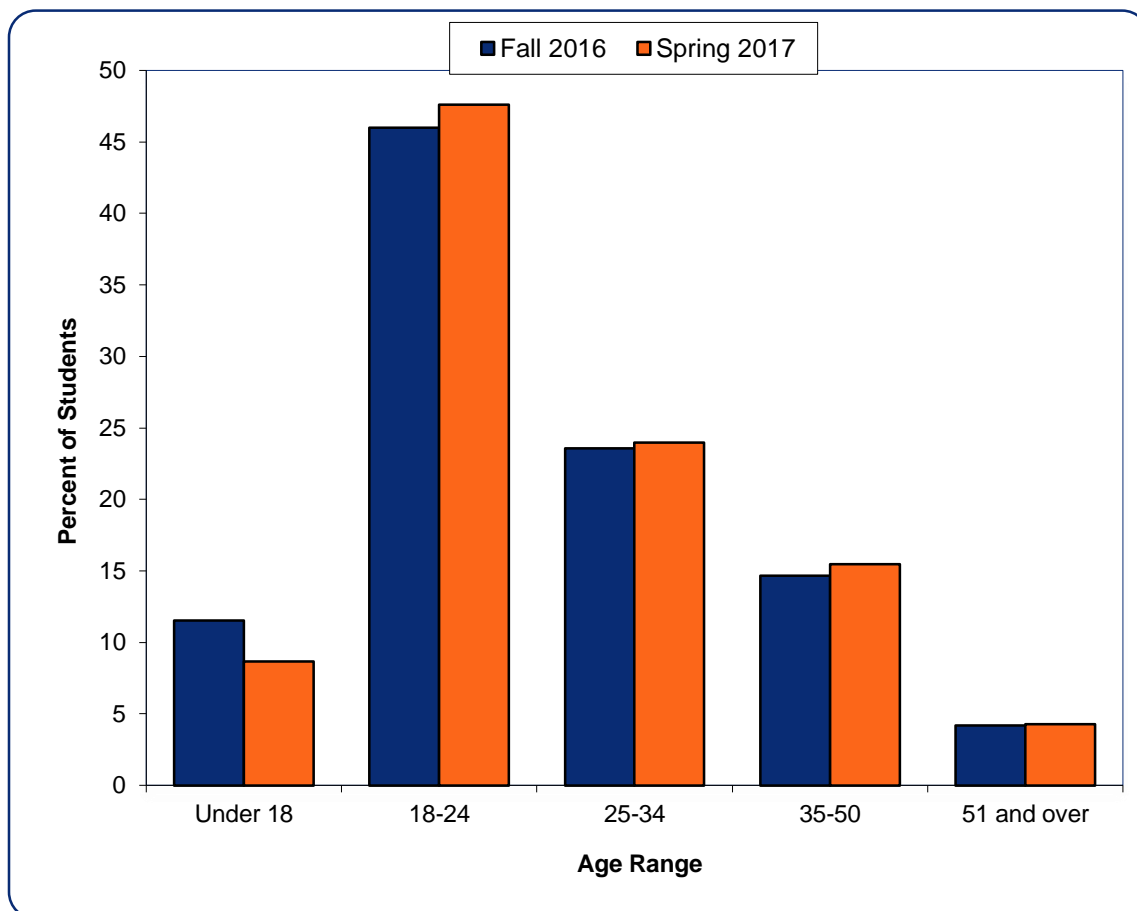
Spring 2017 Enrollment by College



Source: Banner SIS

Enrollment by Age

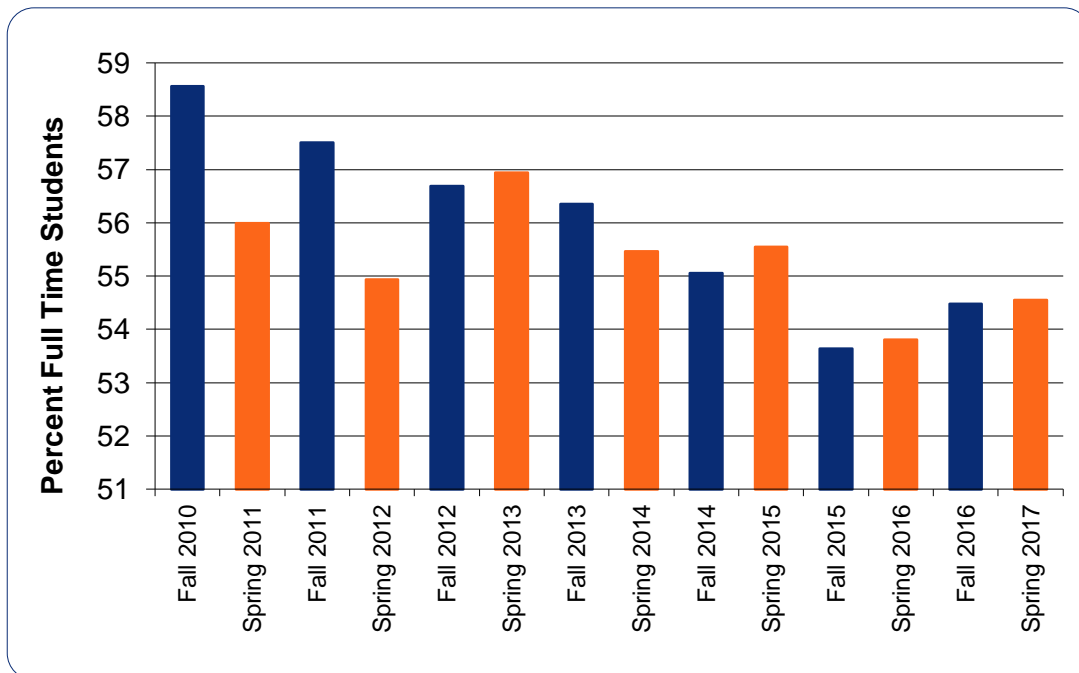
Age Range	Fall 2016		Spring 2017	
	Number of Students	Percent of Students	Number of Students	Percent of Students
Under 18	807	11.5	583	8.7
18-24	3,218	46.0	3,197	47.6
25-34	1,650	23.6	1,610	24.0
35-50	1,027	14.7	1,038	15.5
51 and over	294	4.2	287	4.3
Total	6,996	100	6,715	100
Average Age	27		27	
Oldest Age	83		77	
Youngest Age	13		14	



Source: USG Data Warehouse

Enrollment by Full-Time/Part-Time Status

Semester	Full Time	Part Time	Total	% Full Time
Fall 2010	3,868	2,736	6,604	58.6
Spring 2011	3,785	2,974	6,759	56.0
Fall 2011	3,945	2,915	6,860	57.5
Spring 2012	3,775	3,097	6,872	54.9
Fall 2012	4,048	3,092	7,140	56.7
Spring 2013	3,960	2,995	6,955	56.9
Fall 2013	4,092	3,169	7,261	56.4
Spring 2014	3,869	3,107	6,976	55.5
Fall 2014	3,866	3,156	7,022	55.1
Spring 2015	3,748	2,999	6,747	55.6
Fall 2015	3,761	3,251	7,012	53.6
Spring 2016	3,592	3,083	6,675	53.8
Fall 2016	3,811	3,185	6,996	54.5
Spring 2017	3,663	3,052	6,715	54.5



Note: Nine or more hours is considered full-time for graduate students and 12 or more for undergraduate students

Source: USG Semester Enrollment Reports

Student Course Loads

Fall 2016		
Status/Credit Hours	Number of Students	Percent of Students
Part-Time		
1-5 Credit Hours	478	6.8
6-11 Credit Hours	2,441	34.9
Graduate (1-8 Credit Hours)	266	3.8
Total	3,185	45.5
Full-Time		
12-15 Credit Hours	3,094	44.2
16+ Credit Hours	542	7.7
Graduate (9+ Credit Hours)	175	2.5
Total	3,811	54.5
Spring 2017		
Part-Time		
1-5 Credit Hours	485	7.2
6-11 Credit Hours	2,279	33.9
Graduate (1-8 Credit Hours)	288	4.3
Total	3,052	45.5
Full-Time		
12-15 Credit Hours	2,980	44.4
16+ Credit Hours	507	7.6
Graduate (9+ Credit Hours)	176	2.6
Total	3,663	54.5

Source: USG Data Warehouse

Enrollment by Student Major and College

	Fall 2012	Fall 2013	Fall 2014	Fall 2015	Fall 2016
College of Arts and Sciences					
Associates and Certificates					
Film Production				22	23
Int. Studies (Pre-Engineering)	57	67	81	100	84
Int. Studies (Pre-Pharmacy)	82	67	55	43	41
Integrative Studies (AA)	11	5	6	6	8
Integrative Studies (AS)	9	8	11	12	7
Paralegal Studies	42	30	21	18	19
Paralegal Studies (Cert)	58	56	48	29	24
Bachelors					
Administrative Management	181	205	222	227	246
BA Liberal Studies	180	113	91	100	99
Biology	359	324	315	338	348
Biology with Teacher Cert	9	8	9	10	7
Chemistry	64	55	53	58	61
Communication & Media Studies	61	77	207	193	158
Criminal Justice	256	254	221	208	184
English	93	108	80	80	70
English with Teacher Cert	64	52	29	24	22
Film Production				19	71
History	61	59	44	41	55
History with Teacher Cert	52	45	36	39	33
Homeland Security/Emerg Mgmt				7	9
Integrative Studies (BS)	201	213	221	229	242
Legal Studies	145	109	108	110	102
Middle Grades Education	60	60	57	33	30
Music - General	48	41	47	13	4
Performing Arts				65	68
Philosophy	11	15	16	9	4
Political Science	68	59	56	56	64
Pre-Comm & Media Studies	111	130		1	
Pre-Middle Grades Education	97	69	66	73	65
Pre-Music	8	19	10		1
Psychology & Human Services	568	525	457	438	451
Sociology	94	87	88	78	77
Spanish				1	1
Technology Management	81	75	40	44	45
Theatre	39	37	37	14	3
Undeclared	385	593	692	795	913
Transient Student		18	24	23	24
Masters					
Criminal Justice			3	9	12
Liberal Studies (Graduate)	43	40	56	57	54
Masters of Arts in Teaching				26	20
Psychology (Graduate)	33	33	28	27	20
Teacher Leadership			1	3	2
Teaching English	14	12	9		
Total	3,645	3,668	3,545	3,678	3,771

Enrollment by Student Major and College (continued)

	Fall 2012	Fall 2013	Fall 2014	Fall 2015	Fall 2016
College of Business					
Bachelors					
Accounting	93	86	141	153	127
General Business	39	48	50	65	92
Management	98	90	140	153	143
Marketing	53	53	57	81	92
Pre-Business	558	571	441	343	282
Supply Chain Management	46	61	73	82	70
Masters					
Master of Business Admin.	118	126	146	151	184
Total	1,005	1,035	1,049	1,028	990
College of Health					
Bachelors					
Nursing (Basic Licensure)	224	218	198	200	194
Pre-BSN (Basic Licensure)	780	765	643	608	554
Nursing (RN Completion)	37	66	61	54	36
Pre-BSN (RN Completion)	57	62	51	37	35
Dental Hygiene	55	50	53	55	55
Pre-Dental Hygiene	116	108	135	156	140
RDH-BSDH (RDH Completion)	5	10	8	2	10
Pre-RDH-BSDH (RDH Completion)	7	5	7	10	7
Health Care Management	456	455	421	385	330
Health & Fitness Management	131	150	142	150	132
Health Sciences				67	74
Masters					
Nursing (Graduate)	26	30	32	55	58
Health Administration	58	75	71	62	62
RN-MSN		2	2	4	2
Total	1,952	1,994	1,822	1,845	1,689
College of Information & Mathematical Sciences					
Associates and Certificates					
Computer Network Technician (Cert)	11	8	6		
Computer Network Technology (AAS)	18	15	9	3	
Information Technology (AAS)	18	16	17	21	11
Bachelors					
Computer Science	146	156	178	193	210
Information Technology (BIT)	182	205	198	185	177
Information Technology (BSIT)	39	35	38	38	46
Mathematics	60	49	54	39	42
Mathematics with Teacher Cert	24	27	35	17	11
Technology Management with CNET Concentration			28	24	22
Masters					
Master of Archival Studies	29	35	32	27	23
Teaching Mathematics	11	11	7		
Total	538	557	602	547	542
School of Graduate Studies					
Master - No Degree		4	3	4	4

Source: Banner SIS

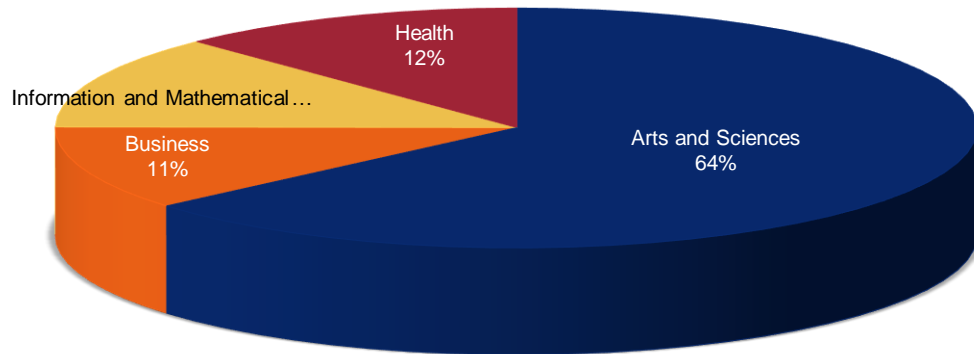
Student Credit Hours

Undergraduate Credit Hours by Department

		Fall 2012	Fall 2013	Fall 2014	Fall 2015	Fall 2016
Arts and Sciences	Department					
	Biology				3,993	4,391
	Chemistry & Physics				3,440	3,814
	English	5,709	5,934	5,856	6,106	6,096
	Humanities	9,738	9,762	8,922	8,643	8,673
	Interdisciplinary Studies	1,775	1,796	1,969	2,000	2,268
	Natural Sciences	8,156	8,026	7,794		
	Psychology	6,060	6,240	5,385	5,628	5,856
	Social Sciences	8,066	7,579	6,863	7,421	7,302
	Teacher Education	1,002	1,083	982	709	771
	Visual and Performing Arts	4,990	5,262	5,029	4,736	5,164
Total		45,496	45,682	42,800	42,676	44,335
Business	Department					
	Business					
	Law, Economics, Accounting, and Finance	3,522	3,831	3,972	4,242	4,170
	Management, Marketing and Supply Chain Management	3,337	3,538	3,838	3,718	3,762
Total		6,859	7,369	7,810	7,960	7,932
Health	Department					
	Nursing	4,707	4,555	4,365	4,245	4,354
	Dental Hygiene	628	599	634	667	657
	Health Care Management	3,417	3,723	3,345	2,877	2,535
	Health Fitness Management	1,058	1,117	991	1,194	965
Total		9,810	9,994	9,335	8,983	8,511
Information and Mathematical Sciences	Department					
	Information Technology	2,773	2,811	2,868	2,869	2,852
	Mathematics	5,566	5,554	5,522	6,683	5,989
Total		8,339	8,365	8,390	9,552	8,841
Other	Learning Support	1,787	1,695	1,301		
	Enrollment Management				974	468
	Other	1,076	1,041	909	83	54
University Total		73,367	74,146	70,545	70,228	70,141

- Learning Support included in either the English or Mathematics departments for Fall 2015 to Fall 2016.
 - Department of Natural Sciences was divided into two departments: Biology and Chemistry & Physics in Fall 2015.
 - Also in Fall 2015, we separated Enrollment Management (CSU courses) from Other.
 - eCore and WebSIT credit hours are included.
- Source: Banner SIS

Fall 2016 Undergraduate Student Credit Hours



Graduate Credit Hours by Program

College	Degree Program	Fall 2012	Fall 2013	Fall 2014	Fall 2015	Fall 2016
Arts and Sciences	Master of Arts in Liberal Studies	260	238	330	355	312
	Master of Teaching in English	96	96	69		
	Master of Psychology	278	262	235	214	207
	Master of Teaching in Teaching Leadership			5	21	11
	Master of Criminal Justice			12	48	68
	Masters of Arts in Teaching				227	143
Total		634	596	651	865	741
Business	Master of Business Administration	812	889	1,024	985	1,362
Total		812	889	1024	985	1362
Health	Master of Science in Nursing	157	197	192	333	421
	RN-MSN		13	10	21	13
	Master of Health Administration	442	595	567	471	504
	No Degree				6	6
Total		599	805	769	831	944
Information and Mathematical Sciences	Master of Teaching in Mathematics	78	85	51		
	Master of Archival Studies	174	201	189	159	129
Total		252	286	240	159	129
University Total		2,297	2,576	2,684	2,840	3,176

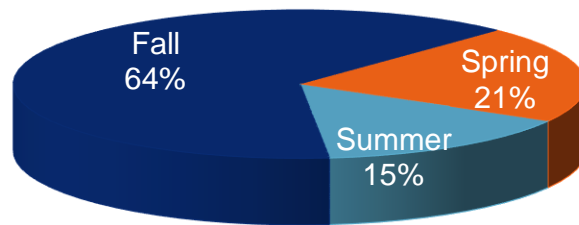
Source: Banner SIS

New Student Enrollment

By Semester and Term

Term	FY 2013	FY 2014	FY 2015	FY 2016	FY 2017
Summer	519	505	369	376	463
Fall	1,779	1,836	1,822	2,025	1,962
Spring	755	683	641	659	654
Total	3,053	3,024	2,832	3,060	3,079

Fiscal Year 2017

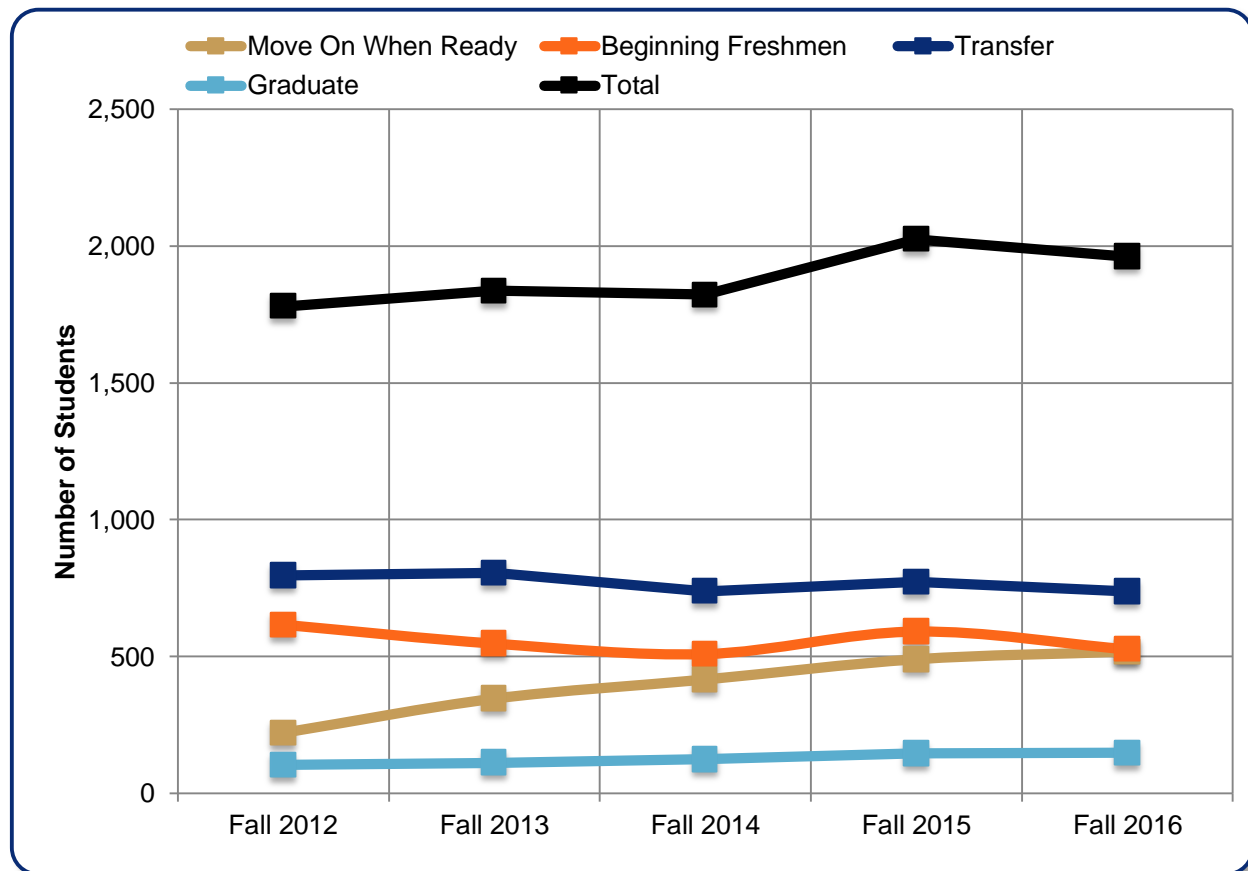


Source: USG Semester Enrollment Report

New Student Enrollment (continued)

Fall Semesters

	Fall 2012	Fall 2013	Fall 2014	Fall 2015	Fall 2016
Move On When Ready	221	346	416	490	518
Beginning Freshmen	616	547	509	591	526
Transfer	796	805	739	772	737
Graduate	104	112	125	146	148
Other	42	26	33	26	33
Total	1,779	1,836	1,822	2,025	1,962

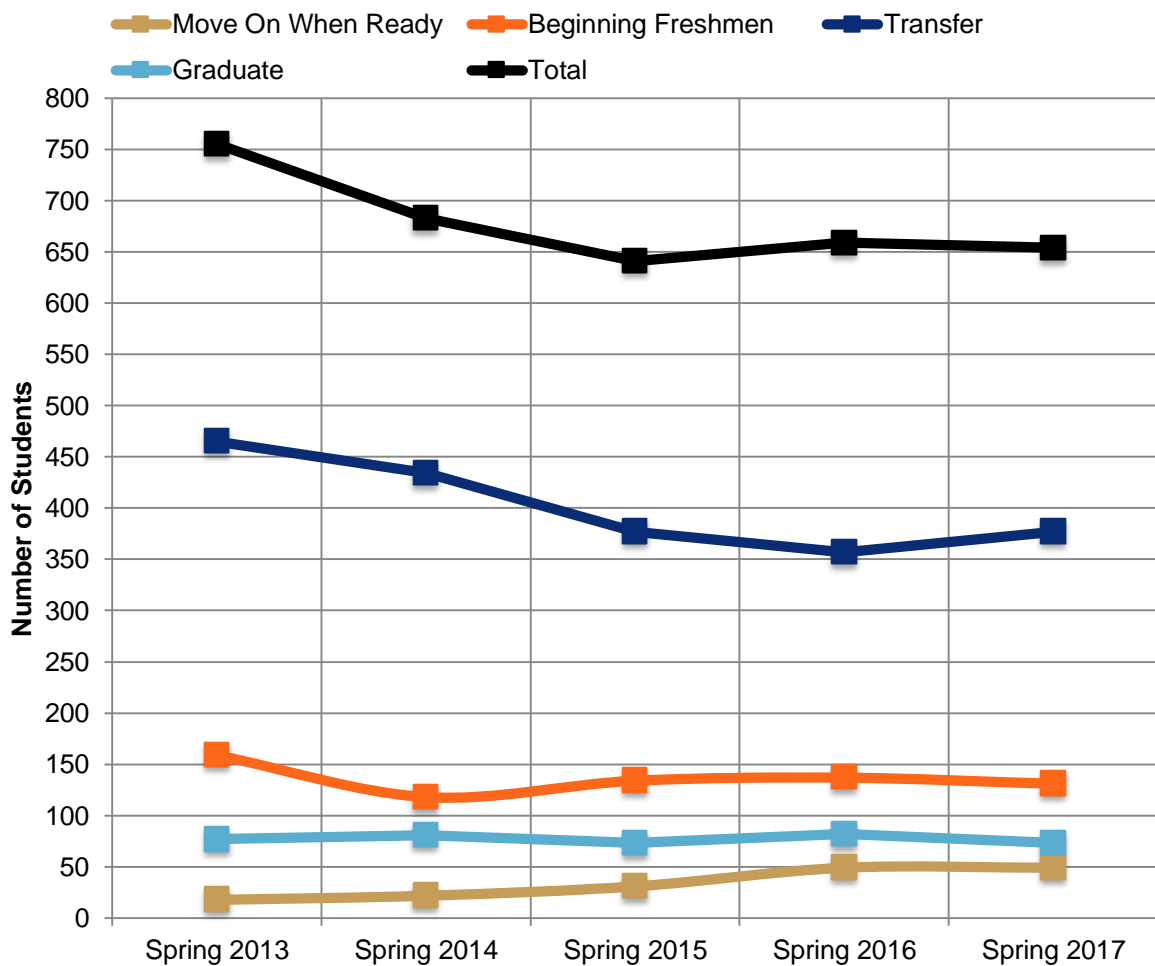


Source: USG Semester Enrollment Report

New Student Enrollment (continued)

Spring Semesters

	Spring 2013	Spring 2014	Spring 2015	Spring 2016	Spring 2017
Dual Enrollment	18	22	31	49	49
Beginning Freshmen	159	118	134	137	131
Transfer	465	434	377	357	377
Graduate	77	81	73	82	73
Other	36	28	26	34	24
Total	755	683	641	659	654

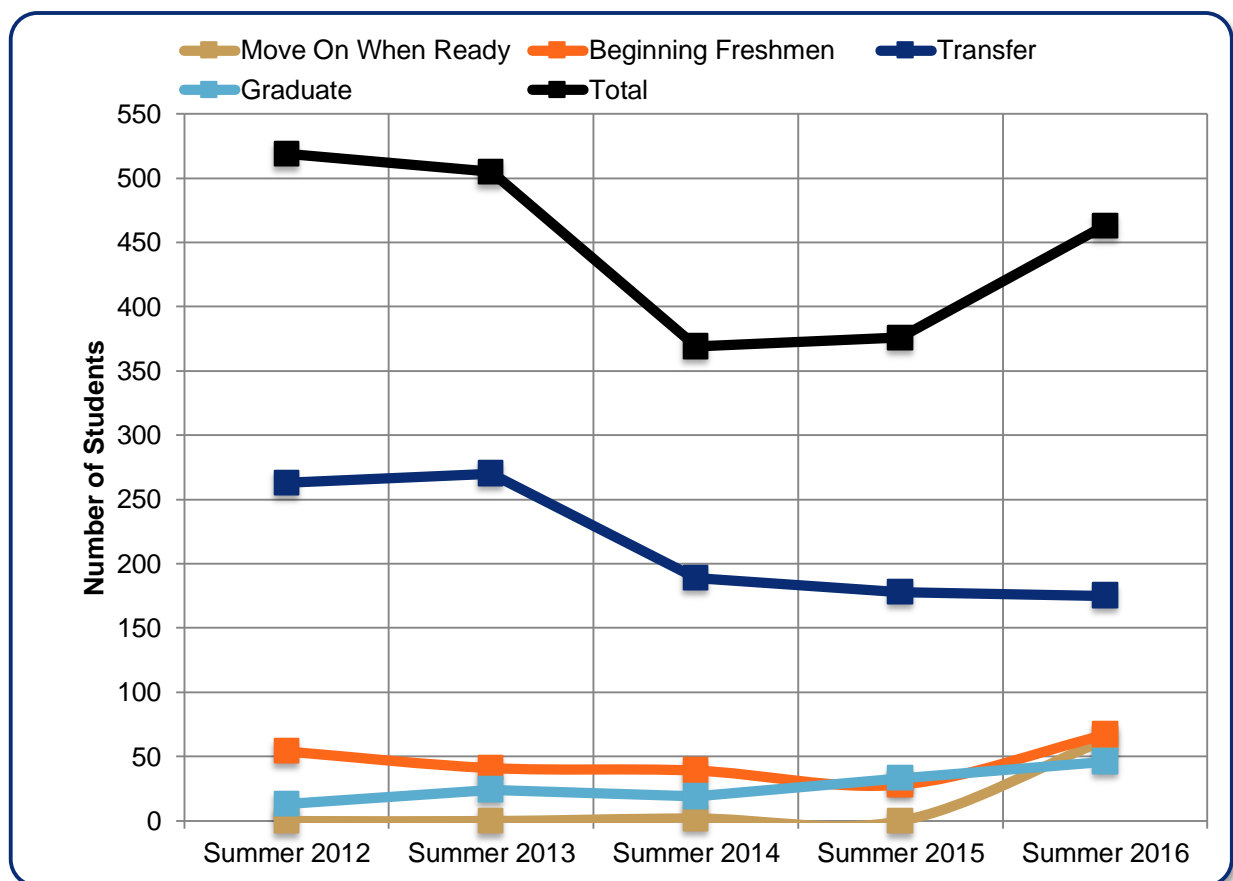


Source: USG Semester Enrollment Report

New Student Enrollment (continued)

Summer Semesters

	Summer 2012	Summer 2013	Summer 2014	Summer 2015	Summer 2016
Move On When Ready	0	0	2	0	63
Beginning Freshmen	54	41	39	28	67
Transfer	263	270	189	178	175
Graduate	13	24	19	33	46
Other	189	170	120	137	112
Total	519	505	369	376	463

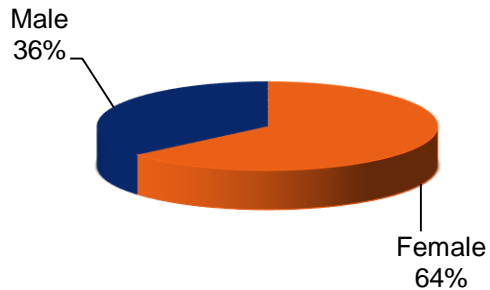


Source: USG Semester Enrollment Report

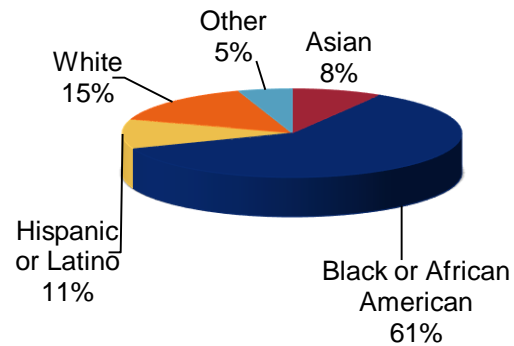
First-Time Full-Time Freshmen

Demographics

Enrollment by Gender



Enrollment by Ethnicity



The ethnicity group “Other” is formed by combining students who are Native Hawaiian or Other Pacific Islander, Two or More Races, or their ethnicity is unknown because their ethnicity group is less than or equal to twenty students.

Top Six Feeder High Schools

High School	Number of Students
Forest Park Senior High School	26
Morrow High School	21
Jonesboro High School	18
Lovejoy High School	15
Stockbridge High School	14
McIntosh High School	12

Top Six Majors

Major	Number of Students
Pre-BSN - Basic Licensure	77
Pre-Business	60
Undeclared	48
Biology	47
Computer Science	42
Psychology & Human Services	26

Top Ten Counties

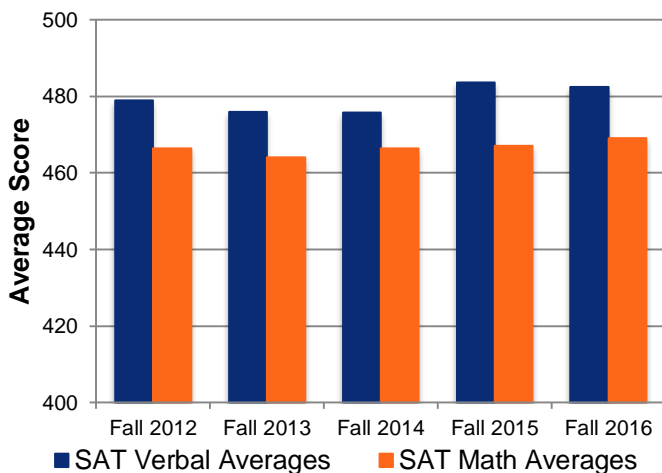
County	Number of Students
Clayton	135
Henry	78
Fulton	44
Fayette	37
DeKalb	36
Rockdale	13
Bibb	12
Gwinnett	12
Chatham	12
Coweta	11

Source(s): USG Data Warehouse, Banner SIS

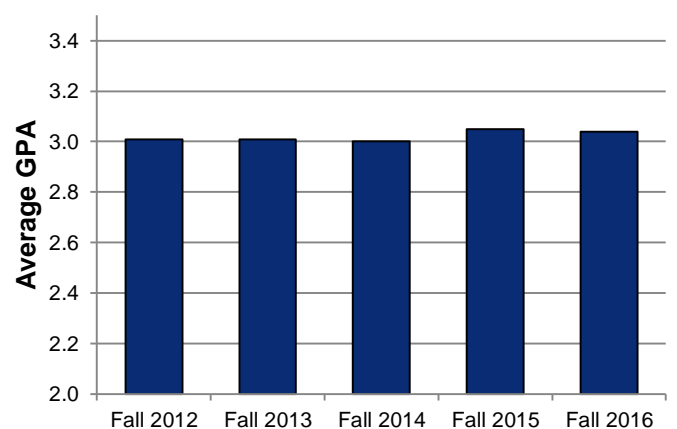
Test Scores and High School GPAs

	Fall 2012	Fall 2013	Fall 2014	Fall 2015	Fall 2016
ACT					
Number of students who took ACT	218	214	228	277	277
Composite Average	19.5	19.8	20.0	20.0	19.8
English Average	19.8	19.8	20.0	19.8	19.9
Math Average	19.0	19.3	19.4	19.4	18.9
Reading Average	19.7	20.5	20.6	20.7	20.7
Science Average	19.6	20.0	20.3	20.2	19.8
SAT					
Number of students who took SAT	382	334	291	326	295
Verbal Average	479	476	476	484	482
Math Average	466	464	466	467	469
High School GPA					
3.50-4.00	83	64	68	102	106
3.00-3.49	151	147	140	147	139
2.50-2.99	169	165	150	149	149
2.00-2.49	56	39	46	64	64
<2.00	0	0	0	1	0
Total	459	415	404	463	458
Average	3.01	3.01	3.00	3.05	3.04

Average SAT Scores for Full-Time Freshmen

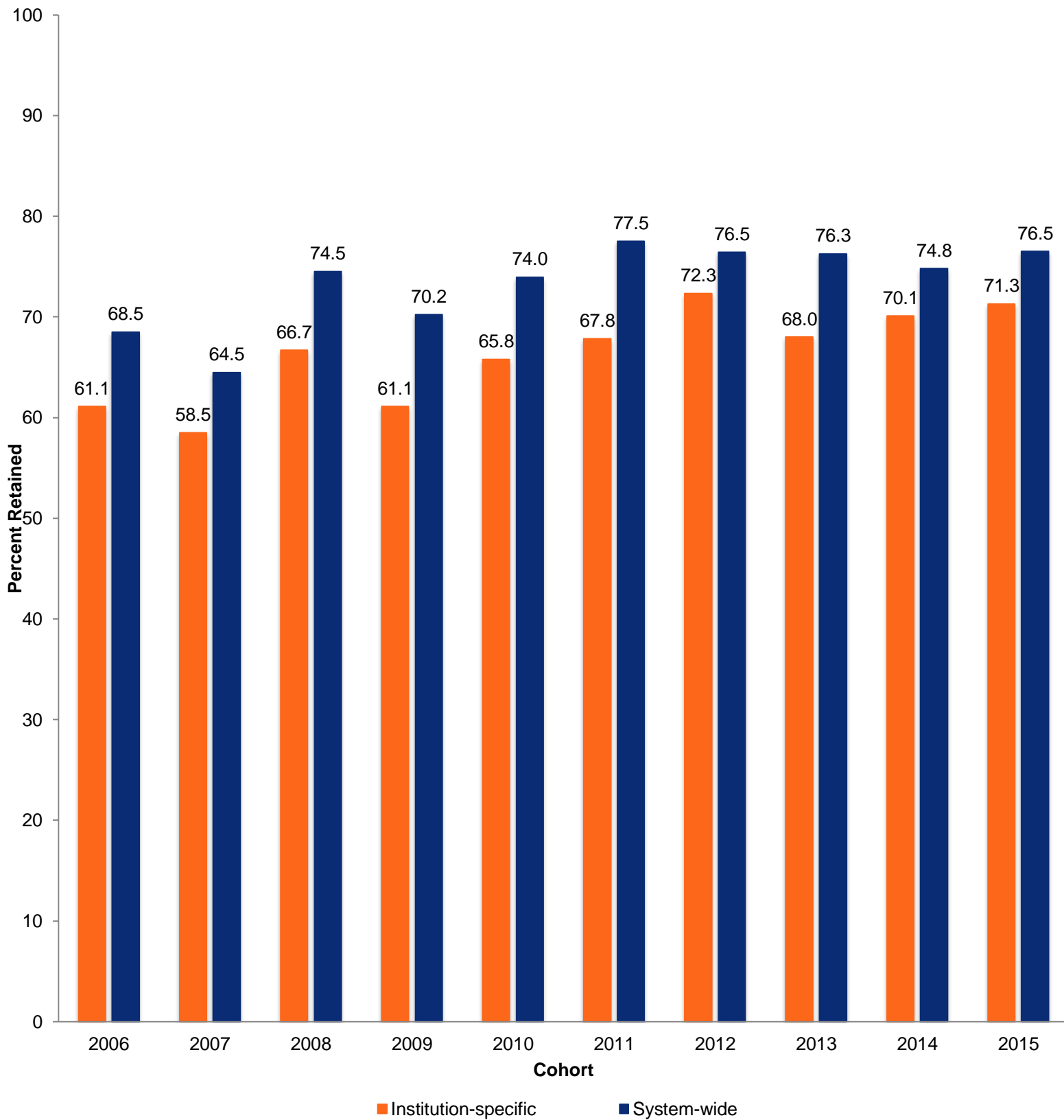


Average High School GPA for Full-Time Freshmen

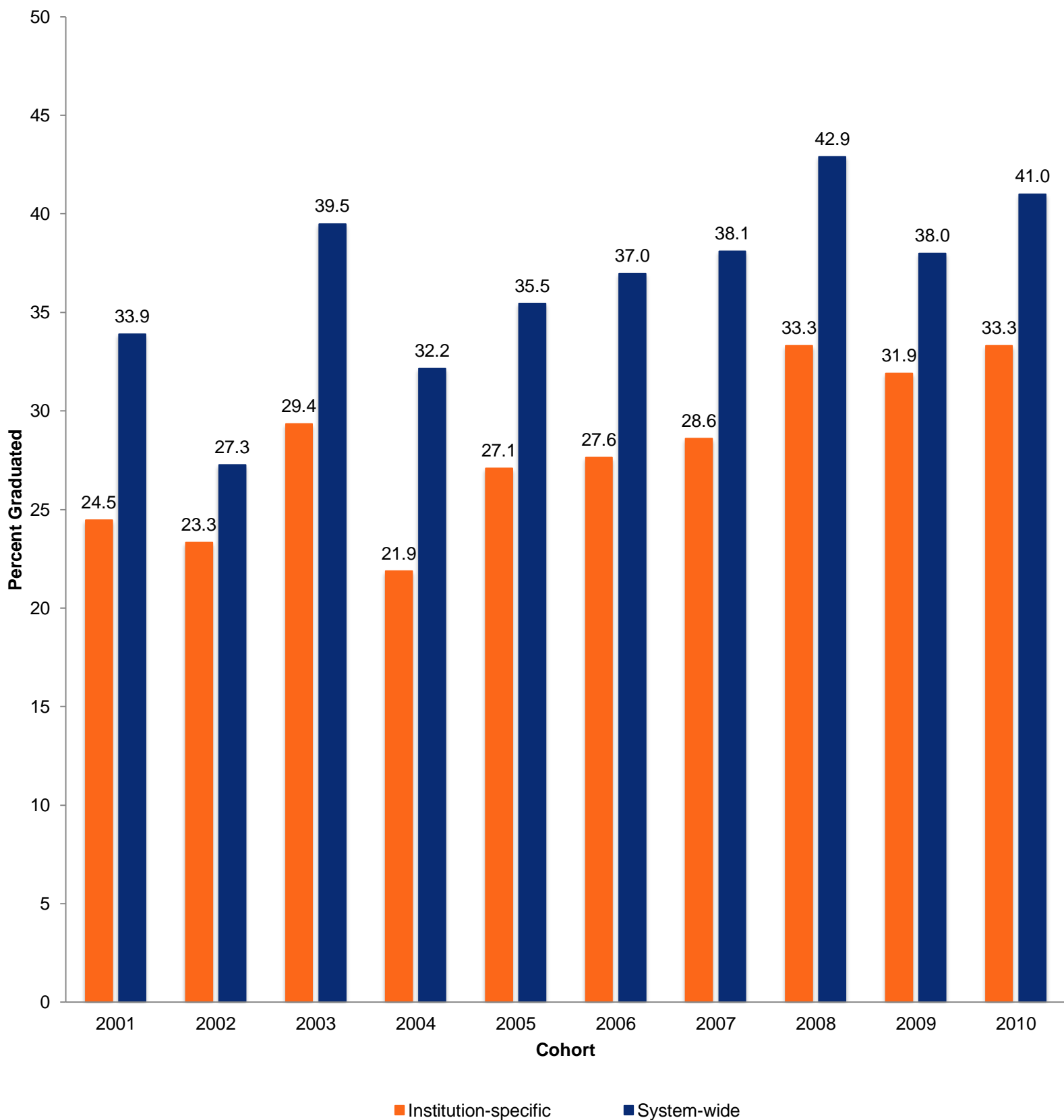


Source: USG Semester Enrollment Report

One Year Retention Rates for First Time Full Time Freshman



Six Year Bachelor's Degree Graduation Rates for First Time Full Time Freshman

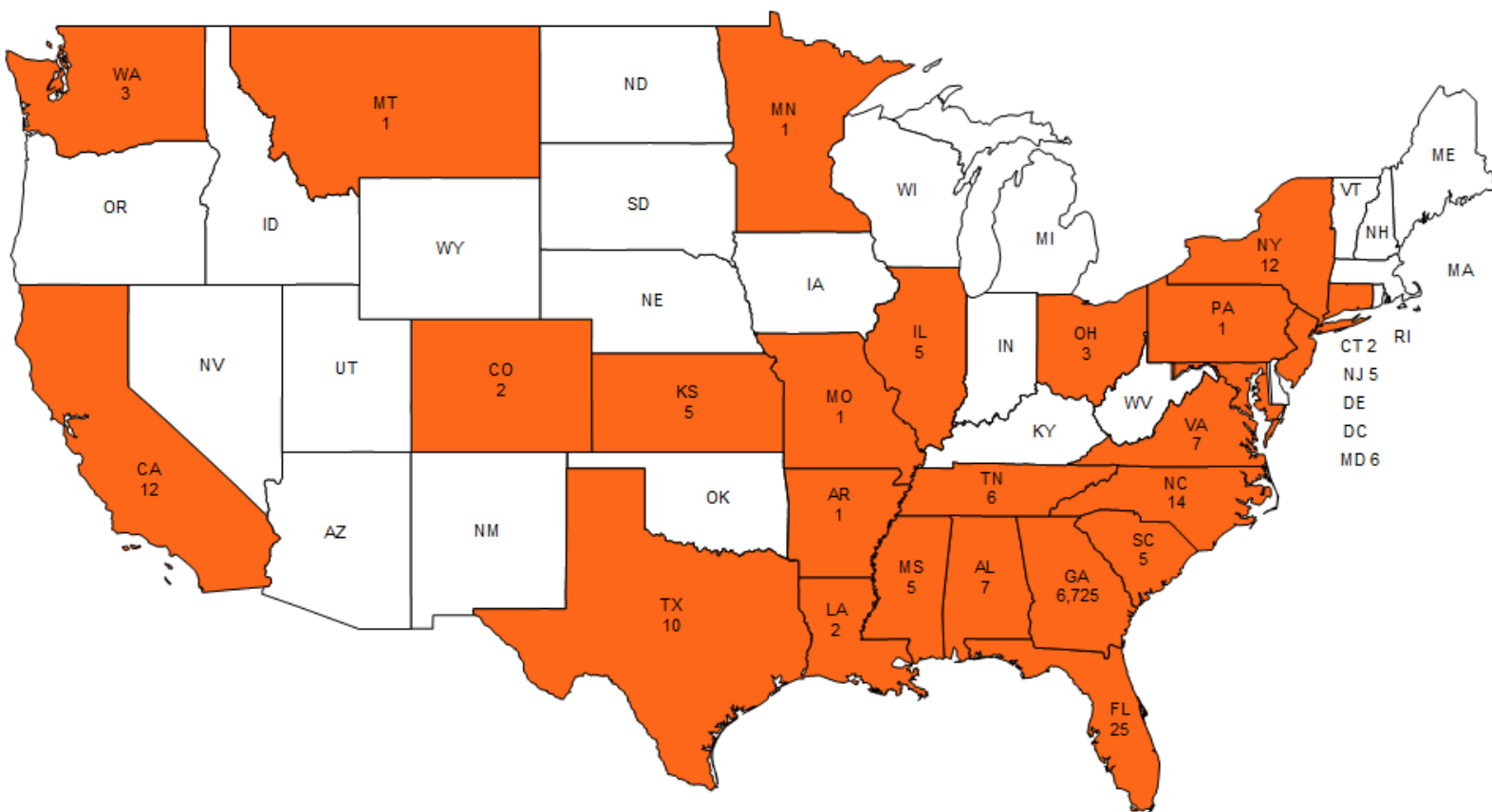


Fall Enrollment by Georgia County

County	Fall 2012	Fall 2013	Fall 2014	Fall 2015	Fall 2016
Clayton	1,811	1,835	1,675	1,630	1,625
Henry	1,279	1,305	1,290	1,306	1,382
DeKalb	785	787	780	818	784
Fulton	855	836	797	783	739
Fayette	619	680	700	699	689
Gwinnett	195	193	207	190	178
Rockdale	176	155	143	134	141
Cobb	116	116	122	128	123
Coweta	123	129	148	144	121
Newton	117	125	108	110	95
Spalding	102	92	90	79	72
Other Georgia Counties	672	720	695	737	776
Total Georgia Students	6,850	6,973	6,755	6,758	6,725
Out-of-State/Country Students	290	288	267	254	271
Total Enrollment	7,140	7,261	7,022	7,012	6,996

Source: USG Data Warehouse, Banner SIS

Fall 2016 Enrollment by State



Source: Banner SIS

Fall Enrollment by Country of Origin

Country	Fall 2012	Fall 2013	Fall 2014	Fall 2015	Fall 2016
Saudi Arabia	2	33	45	17	39
United Kingdom/Gr Britain	11	15	10	16	10
Finland	1	2	3	4	5
India	1	3	3	5	5
Spain	2	1	2	4	5
France	1	1	2	2	3
Nigeria	1	3	7	5	3
Turkey	2	2	3	1	3
Other	39	39	40	37	24
Total	60	99	115	91	97
Total Countries Represented	31	35	37	30	26

Source: Banner SIS

Our Faculty



2016–17 Full-Time Instructional Faculty

Effective 10/9/2016

COLLEGE OF ARTS & SCIENCES

Dean

Nasser Momayezi, PhD, Professor, Tenured

Associate Dean

John G. Campbell, PhD, Professor, Tenured

Assistant Dean

R.B. Rosenberg, PhD, Professor, Tenured

Biology

Department Chair

Michelle A. Furlong, PhD, Professor, Tenured

Professors

Jere Ann Boudell, PhD, Tenured
Stephen C. Burnett, PhD, Tenured
Jacqueline A. Jordan, PhD, Tenured
Francine Norflus, PhD, Tenured

Associate Professors

J. Yvette Gardner, PhD, Tenured
Christopher H. Kodani, PhD, Tenured
Paul D. Melvin, PhD, Tenured
Barbara E. Muslof, PhD, Tenured

Assistant Professors

Nikki T. Sawyer, PhD
Anne M. Showalter, PhD

Senior Lecturers

Diane E. Day, PhD
Renee E. McFarlane, MS

Lecturer

Julie E. Morgan, ABD

Chemistry and Physics

Department Chair

Patricia N. Todebush, PhD, Professor, Tenured

Professors

Tatiana A. Krivosheev, PhD, Tenured
Caroline E. Sheppard, PhD, Tenured

Associate Professors

Augustine O. Agyeman, PhD, Tenured
Bram S. Boroson, PhD, Tenured
Susan F. Hornbuckle, PhD, Tenured
Jonathan T. Lyon, PhD, Tenured
Richard Singiser, PhD, Tenured

Assistant Professors

Aubrey L. Dyer, PhD
Emily A. Harbert, PhD
John J. Meyers, PhD

Lecturers

L. Zane Miller, PhD
Michael J. Norman, MS

English

Department Chair

Barbara A. Goodman, PhD, Professor, Tenured

Professors

Brigitte F. Byrd, PhD, Tenured
Susan E. Copeland, PhD, Tenured
Gwendolyn Harold, PhD, Tenured
Gregory V. McNamara, PhD, Tenured
Kathryn J. Pratt Russell, PhD, Tenured
Patricia A. Smith, EdD, Tenured
Robert A. Vaughan, PhD, Tenured,
Dean of Graduate Studies

Associate Professors

Cantice G. Greene, PhD, Tenured
Sipai Klein, PhD, Tenured
Mary R. Lamb, PhD, Tenured
Eugene A. Ngezem, PhD, Tenured
Robert R. Pfeiffer, PhD, Tenured
Amy D. Sanford, PhD, Tenured

Assistant Professors

Khalilah O. Ali, PhD
Jennifer M. Parrott, PhD
Christopher J. Ritter, PhD

Senior Lecturer

Margaret W. Fletcher, PhD

Lecturer

Stephanie A. Richardson, ABD

Humanities

Department Chair

Adam Tate, PhD, Professor, Tenured

Professors

Alexander Hall, PhD, Tenured,
Director of Honors Program
Ronald L. Jackson, PhD, Tenured
E. Joe Johnson, PhD, Professor, Tenured
Marko H. Maunula, PhD, Tenured
Christopher J. Ward, PhD, Tenured

Associate Professors

David Gilbert, PhD, Tenured
Randall S. Gooden, PhD, Tenured
Todd D. Janke, PhD, Tenured
Kathryn W. Kemp, PhD, Tenured
Dennis R. Miller, PhD, Tenured
Carol L. White, PhD, Tenured

Assistant Professors

Jelani M. Favors, PhD
Andrew P. Kurt, PhD
Maria del Rosario Pujals Vickery, PhD

Lecturers

Benjamin L. Buckley, PhD
Aaron A. Dopf, PhD
Sanjay Lal, PhD

Interdisciplinary Studies

Department Chair:

Jason Davis, PhD, Associate Professor, Tenured

Professor

Christie H. Burton, EdD, Tenured

Associate Professor

Shannon M. Cochran, PhD, Tenured

Thomas W. Garsombke, PhD

Sheryne M. Southard, JD, Tenured

Assistant Professors

Xueyu Cheng, PhD

Bryan T. LaBrecque, MBA

Michael M. Lindsay, PhD

Lecturer

Vangela C. Humphries, MA

Marla R. Stewart, MA

Psychology

Department Chair:

Deborah F. Deckner-Davis, PhD, Professor, Tenured

Professors

Eric M. Bridges, PhD, Tenured

Catherine G. Deering, PhD, Tenured

Antoinette R. Miller, PhD, Tenured

Associate Professors

Mark Daddona, PhD, Tenured

Erica J. Gannon, PhD, Tenured

Brian M. Goldman, PhD, Tenured

Pinar Gurkas, PhD, Tenured

Samuel J. Maddox, PhD, Tenured

J. Celeste Walley-Jean, PhD, Tenured

Assistant Professors

Pearl S. Chang, PhD

Christina M. Grange, PhD

Charlie L. Harris, PhD

Stella Michael-Makri, PhD

Eckart Werther, PhD

Lecturer

Nichelle E. Gause, MA

Social Sciences

Department Chair

Lisa D. Holland-Davis, PhD, Associate Professor, Tenured

Professors

Rodger A. Bates, PhD, Professor, Tenured

Kevin P. Demmitt, PhD, Tenured,
Provost and Vice President for Academic
Affairs

Erman W. Khan, PhD, Tenured

Karen B. Young, PhD, Tenured

Associate Professors

Augustine E. Ayuk, PhD, Tenured

Matthew S. Cornick, JD, Tenured

Joseph Corrado, PhD, Tenured

Mara A. Mooney, JD, Tenured

Assistant Professors

Andrea Allen, MS

Antoinette S. France-Harris, JD

Abigail F. Kolb, PhD

Joshua R. Meddaugh, PhD

Senior Lecturer

Lawrence K. Menter, JD

Lecturers

Taralyn C. Keese, MSW

David Pena, MA

Instructor

Elizabeth A. Bonomo, MS

Teacher Education

Department Chair

Dennis G. Attick, PhD, Associate Professor, Tenured, Interim

Professor

Mary N. Hollowell, PhD, Tenured

Associate Professors

Erica K. Dotson, PhD, Tenured

Winifred C. Nweke, PhD

Assistant Professors

Charles Elfer, Sr., PhD

Mandy E. Lusk, PhD

Lecturers

Beverly Ann Garner, MEd

Rosetta L. Riddle, EdS

Visual and Performing Arts

Department Chair

Susan M. Tusing, PhD, Professor, Tenured

Professors

Virginia A. Bonner, PhD, Tenured

Thomas J. Hynes, Jr., PhD, Tenured,
President

Michiko Otaki, DMA, Tenured

Steven A. Spence, PhD, Tenured

Kurt-Alexander N. Zeller, DMA, Tenured

Associate Professors

Alan R. Clark, PhD, Tenured

Christina T. Howell, PhD, Tenured

Mark May, PhD, Tenured

Susan L. McFarlane-Alvarez, PhD, Tenured

Shontelle Thrash, MFA, Tenured

Alan Caomin Xie, MFA, Tenured

Assistant Professors

Brian S. Amsden, PhD

Richard E. Bell, DMA

Michael C. Fuchs, DMA

Jonathan Mark Harris, MFA

Kathleen M. Kelly, MFA

Shandra L. McDonald, MFA

Derrick T. Vanmeter, MFA

Mark J. Watson, PhD

Instructor

Nancy S. Conley, MM

COLLEGE OF BUSINESS

Dean

Avinandan Mukherjee, PhD, Professor, Tenured

Associate Dean

Louis F. Jourdan, PhD, Professor, Tenured

Assistant Dean

Judith Ogden, JD, Associate Professor, Tenured

Accounting, Business Law, Economics, and Finance

Professors

Chen-Miao Lin, PhD, Tenured
Cancheputra Narayanaswamy, PhD, Tenured
Adel M. Novin, PhD, Tenured

Associate Professors

Khamis M. Bilbeisi, PhD
Nikki M. Finlay, PhD, Tenured
Reza Kheirandish, PhD, Tenured
Louis Orchard, PhD, Tenured

Assistant Professor

Andrew M. Sbaraglia, PhD
Jesse Zinn, PhD

Lecturer

Dustin Micah Grant, MA

Management, Marketing, Supply Chain Management, and Intl. Business

Professors

Diane Fulton, PhD, Tenured
Craig Hill, PhD, Tenured
George E. Nakos, DBA, Tenured
Alphonso Ogbuehi, DBA, Tenured
Margaret Thompson, PhD, Tenured
Anita Whiting, PhD, Tenured

Associate Professors

David Furman, PhD, Tenured
Kamran S. Moghaddam, PhD
Mario Norman, PhD, Tenured

Assistant Professors

Carin A. Lightner-Laws, PhD
Keith E. Miller, PhD
Leon C. Prieto, PhD

Senior Lecturers

Ronald Dulaney, MBA
John Mascaritolo, MBA

Lecturers

James D. Smith, MBA

COLLEGE OF HEALTH

Dean

Lisa W. Eichelberger, DSN, Professor, Tenured

School of Nursing

Professor

Sue Ellen Bingham, DSN, Tenured
Betty Glenn Lane, PhD, Tenured

Associate Professors

Victoria Foster, PhD, Tenured
Misi Grace Nteff, DNP
Susan J. Sanner, PhD

Assistant Professors

Nancy Capponi, MSN
Debra J. Cody, PhD
Susan L. Estes, MS
Margaret McIlwain, DNP
Sharon Jane Shaw, MSN
Dina Swearngin, EdD
Charlotte E. Swint, DNP
Deonna Tanner, PhD

Instructors

Jennie S. Bergen, MSN
Elicia S. Collins, MSN
Han Ngoc Dong, MSN
Susan Gronka, MSN
Emily Kilburg, MSN
Crystal Marchant, MS
Laura K. Phillips, MSN
Judith G. Ruvalcaba, MSN
Lisa Smiley, MSN
Colleen A. Walters, MSN

Dental Hygiene

Department Chair

Susan I. Duley, EdD, Professor

Professor

Ximena Zornosa, DMD, Tenured

Associate Professor

Wanda G. Barnes, PhD, Tenured

Assistant Professor

Joanna Harris-Worelds, MS

Health Care Management

Department Chair

Peter G. Fitzpatrick, EdD, Professor, Tenured

Professor

Thomas McIlwain, PhD, Tenured

Associate Professors

Michael E. Dalmat, PhD, Tenured
Ronald Fuqua, PhD, Tenured
M. Scott Stegall, PhD, Tenured

Assistant Professors

Marcia K. Butler, DPH
Kendolyn Smith, DPh
Meri Stegall, PhD
Jocelyn L. Steward, PhD

Senior Lecturer

Deborah M. Gritzmacher, MS

Lecturer

Latrina Walden, MHA

Health Fitness Management

Professor

Melaine Poudevigne, PhD, Tenured

Assistant Professor

Hae Ryong Chung, PhD

COLLEGE OF INFORMATION AND MATHEMATICAL SCIENCES

Dean

Lila Roberts, PhD, Professor, Tenured

Information Technology

Department Chair

Angkul Kongmunvattana, PhD, Professor, Tenured

Professors

Shakil Aktar, PhD, Tenured
Junfeng Qu, PhD, Tenured
Muhammad Rahman, PhD, Tenured

Senior Lecturer

Larry D. Booth, MS

Lecturer

Jillian E. Jones, MS

Associate Professors

Byron A. Jeff, PhD, Tenured
Ken D. Nguyen, PhD, Tenured

Mathematics

Department Chair

Chaogui Zhang, PhD, Associate Professor, Tenured

Professors

Anthony Giovannitti, PhD, Tenured
Weihu Hong, PhD, Tenured
Catherine A. Matos, PhD, Tenured
Kelli L. Nipper, PhD, Tenured

Assistant Professors

Keith Driscoll, PhD
Anthony Stinson, PhD

Senior Lecturers

Bille May, MAT
Jelinda Spotorno, MS

Associate Professors

Scott M. Bailey, PhD, Tenured
Christian Barrientos, PhD, Tenured
Michael Dancs, PhD, Tenured
Elliot Krop, PhD, Tenured
Christopher Raridan, PhD, Tenured
David B. Williams, PhD, Tenured

Lecturers

Jennifer Harris, MAT
Becky Patterson, MEd
Matthew Smith, MAT

Archival Studies

Assistant Professors

Joshua F. Kitchens, MAS
Seth Shaw, MS

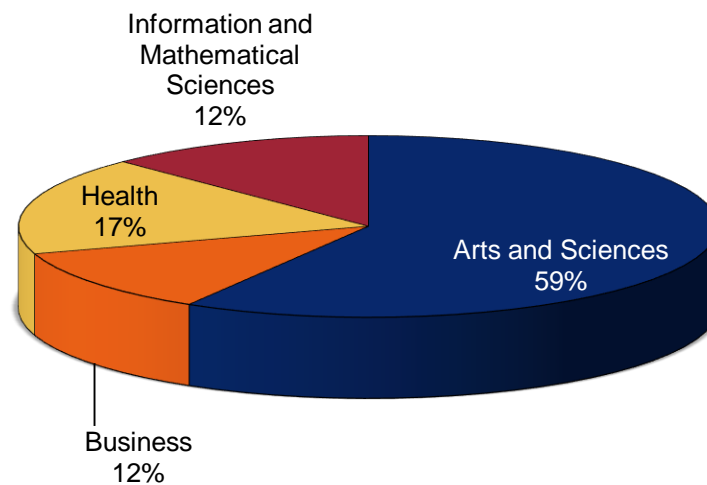
Source: Office of the Provost and Vice President for Academic Affairs, Clayton State University

Fall 2016 Full-Time Instructional Faculty

By College

College	Total Faculty	% by College	% Tenured	% Female	% Male	% Minority
Arts and Sciences	137	58.5	59.9	53.3	46.7	29.2
Business	27	11.5	59.3	25.9	74.1	29.6
Health	41	17.5	31.7	85.4	14.6	19.5
Information and Mathematical Sciences	29	12.4	62.1	27.6	72.4	44.8
Total	234	100.0	55.1	52.6	47.4	29.5

Fall 2016 Clayton State Faculty

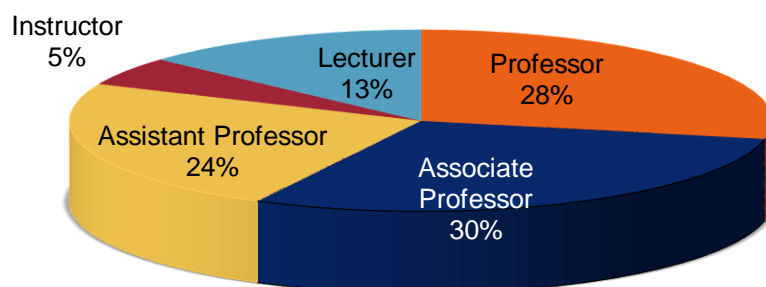


Source: Office of the Provost & Vice President for Academic Affairs, Clayton State University

By Rank

College/School	Professor		Associate Professor		Assistant Professor		Instructor		Lecturer		Total	
	#	%	#	%	#	%	#	%	#	%	#	%
Arts & Sciences	39	28.5	45	32.8	33	24.1	2	1.5	18	13.1	137	58.5
Business	10	37.0	8	29.6	5	18.5	0	0.0	4	14.8	27	11.5
Health	8	19.5	7	17.1	14	34.1	10	24.4	2	4.9	41	17.5
Information and Mathematical Sciences	9	31.0	9	31.0	4	13.8	0	0.0	7	24.1	29	12.4
Total	66	28.2	69	29.5	56	23.9	12	5.1	31	13.2	234	100.0

Fall 2016 Clayton State Faculty

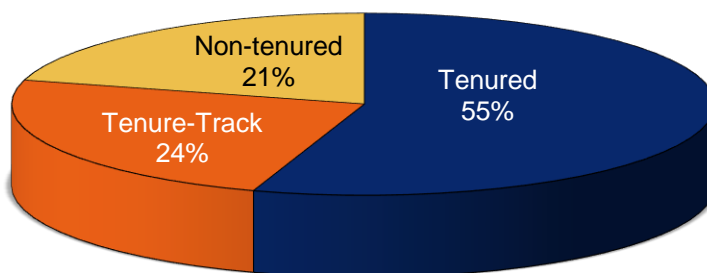


Source: Office of the Provost & Vice President for Academic Affairs, Clayton State University

By Tenure Status

College/School	Tenured		Tenure-Track		Non-tenured		Total	
	#	%	#	%	#	%	#	%
Arts and Sciences	82	59.9	35	25.5	20	14.6	137	58.5
Business	16	59.3	7	25.9	4	14.8	27	11.5
Health	13	31.7	10	24.4	18	43.9	41	17.5
Information and Mathematical Sciences	18	62.1	4	13.8	7	24.1	29	12.4
Total	129	55.1	56	23.9	49	20.9	234	100.0

Fall 2016 Clayton State Faculty

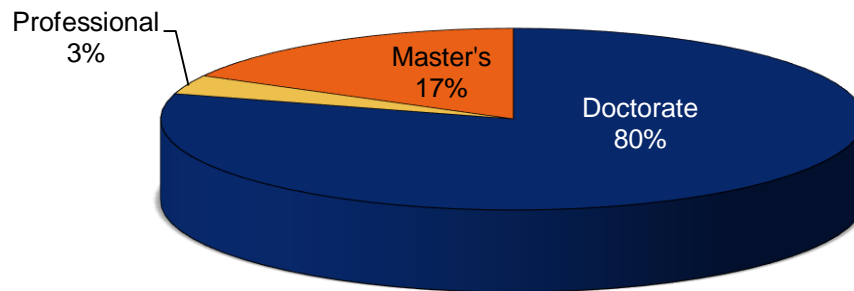


Source: Office of the Provost & Vice President for Academic Affairs, Clayton State University

By Highest Degree

College	Doctorate	Professional	Master's	Total
Arts and Sciences	118	6	13	137
Business	23		4	27
Health	25		16	41
Information and Mathematical Sciences	20	2	7	29
Total	186	8	40	234

Fall 2016 Clayton State Faculty



Source: Office of the Provost & Vice President for Academic Affairs, Clayton State University

2016-17 Graduate Faculty

School of Graduate Studies Dean

Robert A. Vaughan, Dean, School of Graduate Studies

Graduate Program Directors

Dennis G. Attick, Master of Education in Teacher Leadership
Susan Copeland, Master of Arts in Liberal Studies
Jason Davis, Master of Science in Criminal Justice
Charles Elfer, Master of Arts in Teaching History
Victoria Foster, Master of Science in Nursing
Emily Harbert, Master of Arts in Teaching Biology
Joshua Kitchens, Master of Archival Studies
Thomas McIlwain, Master of Health Administration

Kelli L. Nipper, Master of Arts in Teaching Mathematics
Judith Ogden, Master of Business Administration
Mari Roberts, Master of Arts in Teaching Education
Patricia A. Smith, Master of Arts in Teaching English
J. Celeste Walley-Jean, Master of Science in Psychology

Graduate Faculty

Andrea Allen	Nikki M. Finlay	Elliot Krop	Melanie Poudevigne
Brian S. Amsden	Peter G. Fitzpatrick	Andrew P. Kurt	Kathryn J. Pratt Russell
Augustine E. Ayuk	Diane Fulton	Mary R. Lamb	Leon C. Prieto
Scott M. Bailey	Ronald Fuqua	Chen-Miao Lin	Junfeng Qu
Mari Ann Banks	Michelle A. Furlong	Mandy E. Lusk	Christopher Raridan
Rodger A. Bates	David Furman	Samuel J. Maddox	Lila Roberts
Khamis M. Bilbeisi	Erica J. Gannon	Marko H. Maunula	R.B. Rosenberg
Sue Ellen Bingham	Nichelle Elise Gause	Margaret McIlwain	Amy Davis Sanford
Virginia A. Bonner	David Gilbert	Gregory V. McNamara	Susan J. Sanner
Jere Ann Boudell	Anthony Giovannitti	Joshua R. Meddaugh	Seth Shaw
Eric M. Bridges	Betty Lane	Lawrence K. Menter	Steven A. Spence
Benjamin L. Buckley	Brian M. Goldman	Stella Michael-Makri	M. Scott Stegall
Stephen C. Burnett	Randall S. Gooden	Antoinette R. Miller	Meri Stegall
Christie H. Burton	Barbara A. Goodman	Keith E. Miller	Anthony Stinson
Brigitte F. Byrd	Christina M. Grange	Nasser Momayezi	Dina Swearngin
John G. Campbell	Pinar Gurkas	Mara A. Mooney	Charlotte E. Swint
Cantice G. Greene	Alexander Hall	Avinandan Mukherjee	Deonna Tanner
Pearl S. Chang	Gwendolyn Harold	George E. Nakos	Adam Tate
Alan R. Clark	Craig Hill	C.R. Narayanaswamy	Margaret Thompson
Shannon M. Cochran	Lisa D. Holland-Davis	Eugene A. Ngezem	Patricia N. Todebush
Debra J. Cody	Weihsu Hong	Ken D. Nguyen	Susan M. Tusing
Joseph Corrado	Ronald L. Jackson	Mary N. Hollowell	Christopher J. Ward
Mark Daddona	Todd D. Janke	Francine Norflus	Mark J. Watson
Michael E. Dalmat	E. Joseph Johnson	Mario Norman	Eckart Werther
Michael Dancs	Louis F. Jourdan	Adel M. Novin	Carol L. White
Deborah Deckner-Davis	Kathryn W. Kemp	Misi Grace Nteff	Anita Whiting
Catherine G. Deering	Emran W. Khan	Winifred C. Nweke	David B. Williams
Aaron A. Dopf	Reza Kheirandish	Alphonso O. Ogbuehi	Lisa W. Eichelberger
Erica K. Dotson	Sipai Klein	Judith Ogden	Chaogui Zhang
Jelani M. Favors	Abigail F. Kolb	Louis Orchard	Jesse A. Zinn

Source: School of Graduate Studies, Clayton State University

2016-17 Instructional Faculty Committee Memberships

Faculty Senate

Gail Barnes
Marcia Butler
Debra Cody
Kevin Demmitt
Randall Gooden
Laura Herndon
Craig Hill
Tim Hynes
Adam Kubik
John Mascaritolo
Keith Miller

Eugene Ngezem
JunFeng Qu
Muhammad Rahman
Kathryn Pratt Russell
Seth Shaw
Kendolyn Smith
Meri Beth Stegall
Celeste Walley-Jean
Mark Watson
David Williams

Undergraduate Curriculum Committee

(Subcouncil of Faculty Senate)

Andrea Allen
Larry Booth
Pearl Chang
Keith Driscoll
Ron Fuqua
Anthony Giovannitti
Becky Gmeiner
David Greenebaum
Joanna Harris-Worlds
Byron Jeff
Jill Lane

Joshua Meddaugh, Secretary
George Nakos
Adel Novin
Chris Ritter
Judy Ruvalcaba
Richard Singiser, Vice Chair
Jocelyn Steward, Chair
Dina Swearngin
Eric Tack
Joan Taylor
David Williams

Academic Policy Committee

(Subcouncil of Faculty Senate)

Debra Cody
Shakil Akhtar
Marcia Butler
Thomas Jackson, Jr.
Jill Lane
John Mascaritolo, Chair

Joshua Meddaugh
Larry Menter
Stella Michael-Makri
Muhammad Rahman
Charlotte Swint

Faculty Affairs Committee

(Subcommittee of the Provost's Office)

Marcia Butler
Nikki Finlay
Victoria Foster
Pinar Gurkas

Dennis Miller, Secretary
Karen Mullen, Chair
Eugene Ngezem
Seth Shaw

Student Affairs Committee

(Subcommittee of the Provost's Office)

Scott Bailey, Chair
Gail Barnes
Khamis Bilbeisi
Xueyu Cheng
Hae Rae Chung

Laura Herndon
Stephen Schultheis
Chris Stotemyer
Charlotte Swint
Eckart Werther

UNIVERSITY Promotions and Tenure Committee

Sue Bingham
Stephen Burnett
Anthony Giovannitti
George Nakos

Chris Ward
Tammy Wilson
Karen Young

Faculty Development Committee

Subcommittee of the Provost's Office

Michael Dancs
Reza Kherandish
Justin Mays, Chair

Susan McFarlane-Alvarez
Dee Tanner

Honor Program Council

David Gilbert
Alex Hall
Jeff Jacobs
Stephen Jenkins
Elliot Krop

Barbara Mulsof
Mario Norman
Dina Swearngin
Jay Terry

Graduate Council

(Subcommittee of the Provost's Office)

Dennis Attick
Susan Copeland
Michael Dancs
Jason Davis
Charles Elfer
Victoria Foster
Emily Harbert
Charlie Harris
Craig Hill
Joshua Kitchens
Samuel Maddox
Thomas McIlwain

Erin Nagel
Kelli Nipper
Judith Ogden
Melanie Poudevigne
Mari Roberts
Patricia Smith
Meri Beth Stegall
Elizabeth Taylor
Robert Vaughan, Chair
J. Celeste Walley-Jean
Mark Watson

Institutional Review Board

(Subcommittee of the Provost's Office)

Elicia Collins
Michael Dalmat (Dee Tanner/Scott Stegall alternate)
Diane Day (Anne Showalter alternate)
Charlie Harris (Winifred Nweke alternate)
Joshua Kitchens (Michael Dancs alternate)
Jill Lane
Keith Miller, Chair

Erin Nagel
Fran Norflus (Pinar Gurkas alternate)
Judith Ogden
Felisha Shepard-White, Secretary
Scott Stegall
Keesha White
TBD (Keith Driscoll alternate)

University Faculty Smith Award Committee

(Subcommittee of the Provost's Office)

Christina Grange
Lou Orchard

Jocelyn Steward

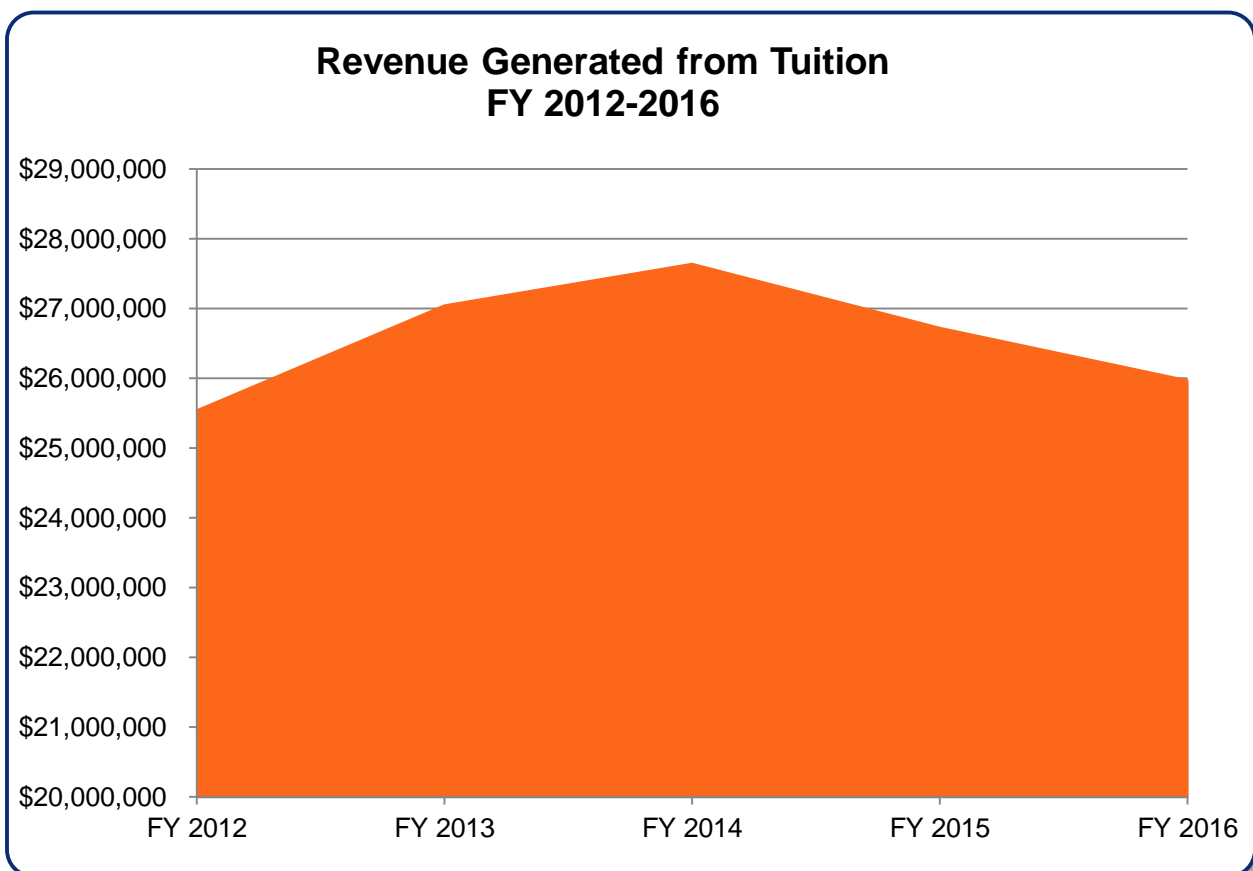
Source: Office of the Provost & Vice President for Academic Affairs, Clayton State University



Tuition Revenue

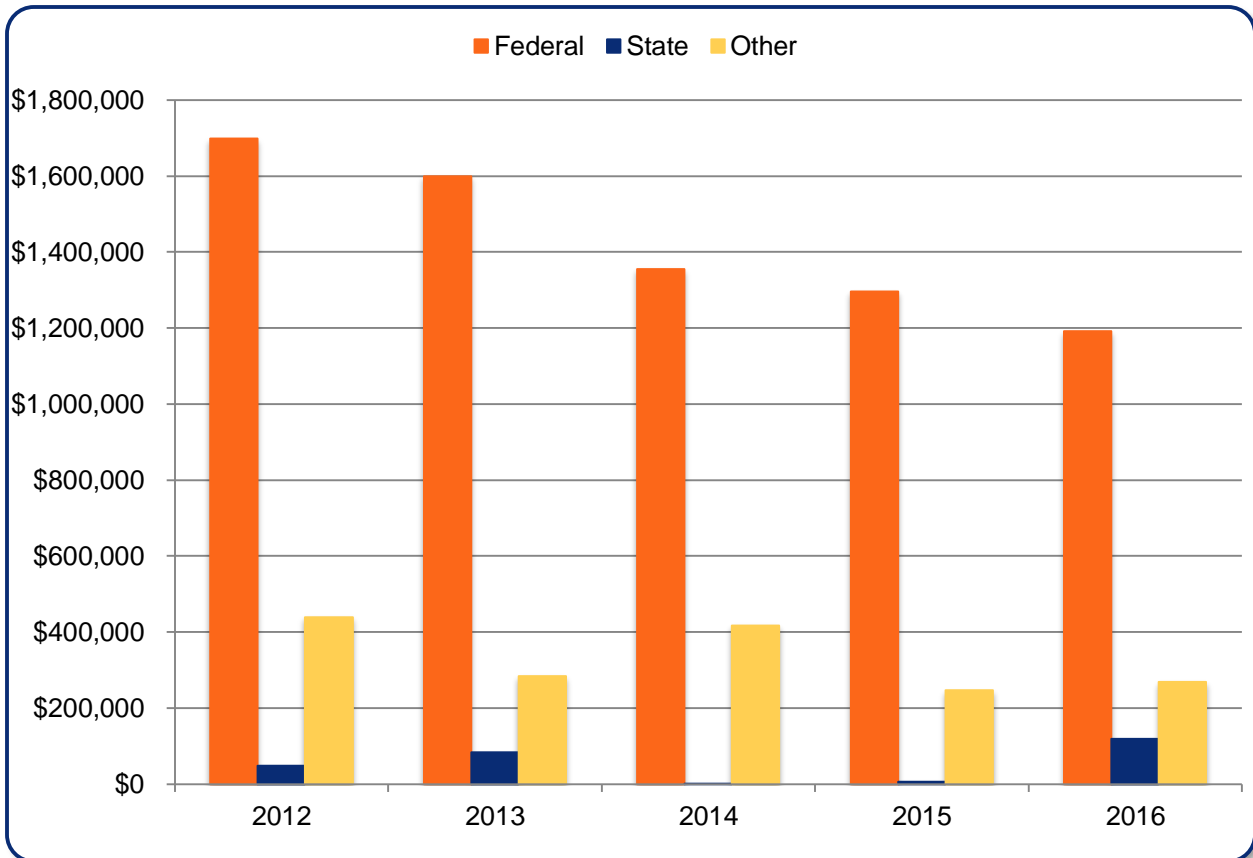
FY 2012 – 2016

Fiscal Year	Revenue
2012	\$25,539,502
2013	\$27,046,979
2014	\$27,639,047
2015	\$26,720,928
2016	\$25,976,400



Grants & Contracts by Type

	2012	2013	2014	2015	2016
Federal	\$1,699,610	\$1,598,746	\$1,355,357	\$1,296,257	\$1,191,798
State	\$47,607	\$83,684	\$1,500	\$5,165	\$118,180
Other	\$438,290	\$283,036	\$417,475	\$247,269	\$268,584
Total	\$2,185,507	\$1,965,466	\$1,774,332	\$1,548,691	\$1,578,562



Education and General Fund Expenditures by Function

Function of Expenditures	FY 2012		FY 2013		FY 2014		FY 2015		FY 2016	
	\$	%	\$	%	\$	%	\$	%	\$	%
Instruction	\$32,628,765	53%	\$31,029,101	50%	\$32,500,144	52%	\$33,098,496	52%	\$33,368,581	50%
Research	\$8,788	0%	\$55,716	0%	\$47,444	0%	\$35,683	0%	\$26,084	0%
Public Service	\$844,641	1%	\$965,261	2%	\$938,279	1%	\$905,749	1%	\$988,215	1%
Academic Support	\$11,014,258	18%	\$11,593,336	19%	\$10,679,102	17%	\$10,560,758	17%	\$10,948,420	16%
Student Services	\$7,556,589	12%	\$8,640,899	14%	\$8,753,002	14%	\$9,403,402	15%	\$10,448,320	16%
Institutional Support	\$9,331,134	15%	\$10,017,301	16%	\$10,051,268	16%	\$9,337,652	15%	\$11,105,879	17%
Total	\$61,384,175	100%	\$62,301,614	100%	\$62,969,239	100%	\$63,341,740	100%	\$66,885,499	100%

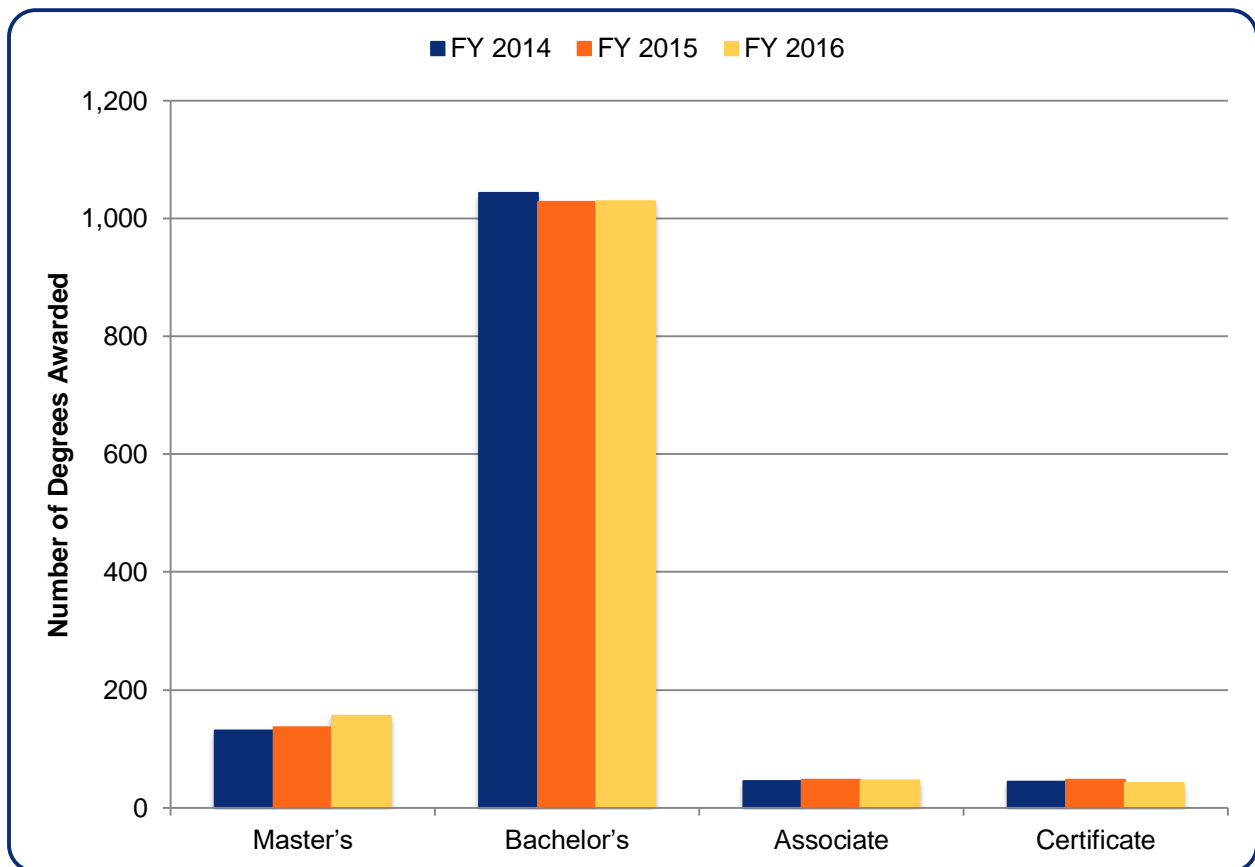
Our Graduates



FY 2014 – 2016 Degrees Conferred

Total Degrees Conferred by Degree Level

	FY 2014	FY 2015	FY 2016
Master's	131	137	156
Bachelor's	1,044	1,028	1,029
Associate	45	48	46
Certificate	44	48	42
Total Degrees	1,264	1,261	1,273



Source: USG Degrees Conferred

Degrees Conferred by College and Major

College of Arts & Sciences

	FY 2014	FY 2015	FY 2016
Master's			
Liberal Studies (MA)	5	12	7
Teaching English (MAT)	8	3	
Masters of Arts in Teaching (MAT)		1	13
Psychology (MS)	10	14	12
Total Master's Degrees	23	30	32
Bachelor's			
Middle Level Education (BA)	25	17	15
Integrative Studies (BA, BS)	125	117	135
Music (BA)	7	7	6
Biology (BS)	30	29	28
Communication & Media Studies (BA)	26	28	25
Psychology (BS)	116	108	101
History (BA)	18	13	15
Criminal Justice (BS)	34	43	49
Political Science (BS)	17	13	8
English (BA)	27	22	18
Theatre (BA)	6	7	
Sociology (BS)	19	16	9
Administrative Mgmt (BAS)	35	52	66
Technology Mgmt (BAS)	20	26	30
Legal Studies (BS)	18	19	19
Chemistry (BS)	4	7	3
Philosophy (BA)	1	5	4
Performing Arts (BA)			10
Total Bachelor's Degrees	528	529	541
Associate			
Associate of Arts; Core Curriculum (AACC; ASCC)	23	22	25
Paralegal Studies (AASPS)	13	13	9
Total Associate's Degrees	36	35	34
Certificate			
Paralegal Studies	42	44	38
Total Certificates	42	44	38
Total Degrees	629	638	645

College of Business

	FY 2014	FY 2015	FY 2016
Master's			
General Business (MBA)	60	63	81
Total Master's Degrees	60	63	81
Bachelor's			
General Business (BBA)	23	21	10
Management (BBA)	40	44	54
Accounting (BBA)	26	33	40
Business Marketing and Marketing Management (BBA)	31	21	25
Logistics and Supply Chain Management (BBA)	35	28	37
Total Bachelor's Degrees	155	147	166
Total Degrees	215	210	247

College of Health

	FY 2014	FY 2015	FY 2016
Master's			
Nursing (MSN)	5	10	9
Health Administration (MHA)	32	29	22
Total Masters Degrees	37	39	31
Bachelor's			
Nursing (BSN; BSNC)	151	133	128
Dental Hygiene (BSDH)	23	34	28
Health Care Management (BS)	131	108	98
Health Fitness Management (BS)	20	24	24
Total Bachelor's Degrees	325	299	278
Total Degrees	362	338	309

College of Information and Mathematical Sciences

	FY 2014	FY 2015	FY 2016
Master's			
Archival Studies (MAS)	6	4	12
Teaching Mathematics (MAT)	5	1	
Total Master's Degrees	11	5	12
Bachelors			
Information Technology (BIT; BSIT)	26	41	27
Computer Science (BS)	6	8	9
Mathematics (BS)	4	4	8
Total Bachelor's Degrees	36	53	44
Associate			
Information Technology (AASIT)	5	11	12
Computer Networking Technology (AAS)	4	2	0
Total Associate Degrees	9	13	12
Certificate			
Computer Network Technician	2	4	4
Total Certificates	2	4	4
Total Degrees	58	75	72

Survey of Graduating Students

In the spring of 2008, Clayton State began an annual survey of its Bachelors, Associates, and Certificate recipients. The survey was changed in Spring 2015 to include Masters recipients and new questions were added and several of the previous questions were changed or omitted. The students were required to complete the survey in order to participate in the graduation ceremony. The data collected from this survey provides useful information about these students during their time at the University and their plans for the future. The following table is a summary of these findings:

	Spring 2013	Spring 2014	Spring 2015	Spring 2016	Spring 2017
# of Respondents	157	150	483	508	526
Age					
Under 21	0.6%	1.3%	0.2%	0.4%	1.1%
21-25	38.9%	48.0%	40.4%	44.5%	39.9%
26-35	30.6%	20.0%	34.8%	32.3%	32.7%
36-55	25.5%	28.7%	22.2%	21.7%	23.6%
Over 55	3.8%	1.3%	2.5%	1.2%	2.7%
Gender					
Male	26.8%	24.0%	27.1%	26.6%	24.1%
Female	72.6%	75.3%	72.9%	73.4%	75.9%
Race/Ethnicity					
Am. Indian or Alaskan Native			0.2%	0.2%	0.0%
Asian	5.1%	3.3%	6.2%	6.3%	6.7%
Black	60.5%	55.3%	63.8%	64.2%	66.3%
Hispanic or Latino	3.8%	2.7%	2.5%	2.8%	3.4%
Two or More Races			1.7%	3.0%	1.9%
Native Hawaiian or Other Pacific Islander			0.4%	0.0%	0.2%
White	22.3%	28.0%	20.3%	20.7%	18.3%
Unknown			5.0%	3.0%	3.2%
Degree Type					
Master's			10.1%	12.8%	18.1%
Bachelor's	90.4%	88.7%	88.4%	85.6%	79.5%
Associate	1.9%	2.7%	1.4%	1.2%	2.3%
Certificate				0.4%	0.2%
Attended school...					
only at Clayton State	22.9%	26.0%	25.7%	28.2%	28.9%
as a full-time student	79.6%	82.0%	56.1%	54.3%	53.0%
during the... *					
daytime	42.7%	44.0%	69.4%	69.3%	71.6%
evening	26.1%	23.3%	30.6%	30.7%	28.4%
Financial Aid					
Received financial aid while attending Clayton State	93.6%	93.3%	94.4%	94.9%	93.5%
After completing their degree,					
Employed full-time (on average 30 hours or more per week)			40.2%	41.3%	54.6%
Employed part-time (on average less than 30 hours per week)			12.4%	8.3%	11.6%
Enrolled in a graduate or professional school program or planning to continue education				16.3%	

	Spring 2013	Spring 2014	Spring 2015	Spring 2016	Spring 2017
Seeking employment	33.8%	25.3%	32.7%	30.5%	30.0%
Other (U.S. Military, volunteer or service program, etc)				3.5%	
Not seeking employment					3.8%
Employed after graduation					
A college degree is required and the position is related to my field of study			44.3%	41.7%	32.3%
Continue your education immediately following graduation from Clayton State (i.e., within the next year)?**					
Currently enrolled in a graduate or professional school program					4.2%
Planning to continue my education, but I am not yet enrolled					54.6%
Not planning on continuing my education at this time					41.3%
Ultimate Goal if planning to continue education					
Additional courses or specialized training	8.3%	6.7%	9.3%	7.1%	4.2%
Another bachelor's degree or certificate	1.3%	4.0%	2.7%	2.8%	2.6%
Associate or Bachelor's Degree				0.6%	3.6%
Master's Degree	55.4%	48.7%	57.1%	55.1%	57.6%
Doctoral Degree	21.7%	18.7%	16.4%	18.1%	23.9%
#1 reason for choosing Clayton State					
Nearby Location	36.9%	34.7%	31.7%	28.3%	29.3%
Low cost of attending	12.1%	12.7%	17.4%	17.7%	21.7%
Good academic reputation	7.6%	8.7%	10.4%	9.6%	11.4%
Good faculty	1.3%	0.7%	4.6%	3.3%	3.2%
Liked the social atmosphere	0.6%		1.2%	2.0%	0.6%
Unable to attend first choice school	1.9%	0.7%	5.4%	6.5%	3.6%
Offered the program I wanted	21.0%	20.0%	20.1%	15.7%	16.7%
Liked the size of the college	5.7%	2.7%	3.1%	2.6%	2.9%
Advice of parents or relatives/friends	2.5%	2.7%	3.1%	5.1%	1.7%
Advice of high school staff	0.0%		1.2%	2.4%	0.2%
Wanted to be with friends	0.0%		1.0%	2.6%	0.4%
Able to maintain employment	0.6%	4.0%	4.1%	4.3%	1.7%
Offered financial support	1.9%	3.3%	2.1%	2.4%	1.5%
Satisfaction (the percent of students who evaluated Clayton State as Excellent or Good in response to the areas listed below					
Intellectual Growth	78.3%	84.7%	87.4%	86.6%	93.3%
Personal growth	73.9%	81.3%	85.1%	88.4%	89.7%
Acquiring knowledge and skills applicable to a specific job or type of work	68.8%	74.0%	84.9%	82.7%	88.0%
Acquiring the background for further education in some professional, scientific, or scholarly field	71.3%	75.3%	84.1%	82.3%	87.6%
Gaining a broad general education about different fields of knowledge	74.5%	75.3%	84.7%	82.7%	88.6%
Gaining a range of information that may be relevant to a career	73.9%	80.0%	86.5%	84.8%	91.1%

	Spring 2013	Spring 2014	Spring 2015	Spring 2016	Spring 2017
Developing an understanding and enjoyment of art, music and drama	47.8%	51.3%	56.7%	58.3%	59.9%
Broadening acquaintance with and enjoyment of literature	54.8%	63.3%	65.2%	64.8%	66.9%
Writing clearly and effectively	74.5%	80.0%	79.3%	78.7%	89.4%
Learning to use computers	60.5%	66.7%	69.2%	70.1%	79.7%
Becoming aware of different philosophies, cultures and ways of life	68.8%	73.3%	79.7%	77.2%	82.9%
Instruction in chose major	77.7%	80.0%	86.3%	84.8%	92.4%
Faculty-student interaction	76.4%	80.0%	84.3%	84.3%	87.6%
Overall instruction	78.3%	80.0%	86.7%	84.4%	92.2%
Academic advising	68.8%	68.7%	76.4%	75.0%	78.3%
Career guidance and counseling	60.5%	63.3%	66.3%	66.1%	71.3%
Student services	64.3%	68.0%			82.5%
Food service on campus	45.9%	48.7%	48.4%	50.0%	53.2%
Financial aid services	66.9%	71.3%	73.1%	72.4%	75.1%
Academic support services (e/g. math, reading, and writing labs, tutorial support and remedial courses)	68.8%	62.0%	69.6%	70.9%	76.6%
Registration process	77.1%	77.3%	84.1%	80.7%	88.2%
Campus sponsored recreation activities	64.3%	59.3%	68.3%	66.3%	67.7%
Library services	75.2%	70.7%	75.6%	78.3%	85.4%
Bookstore service			76.6%	72.6%	78.7%
Present attitude toward Associate/Bachelor's Degree major	77.1%	82.0%	87.8%	84.4%	88.2%

*Students were considered attending in daytime if 50% or more of their seated classes were in the daytime since Spring 2015.

** Survey was changed in Spring 2016. For Spring 2016, the primary status included both employment and continued education options. In Spring 2017, employment and continued education questions are separate.