

# CLAYTON STATE UNIVERSITY

## Morrow Campus - Main

State University >> Bachelor’s Dominant  
Total Gross Floor Area: 1,274,494gsf  
Residential Instruction: 687,282gsf

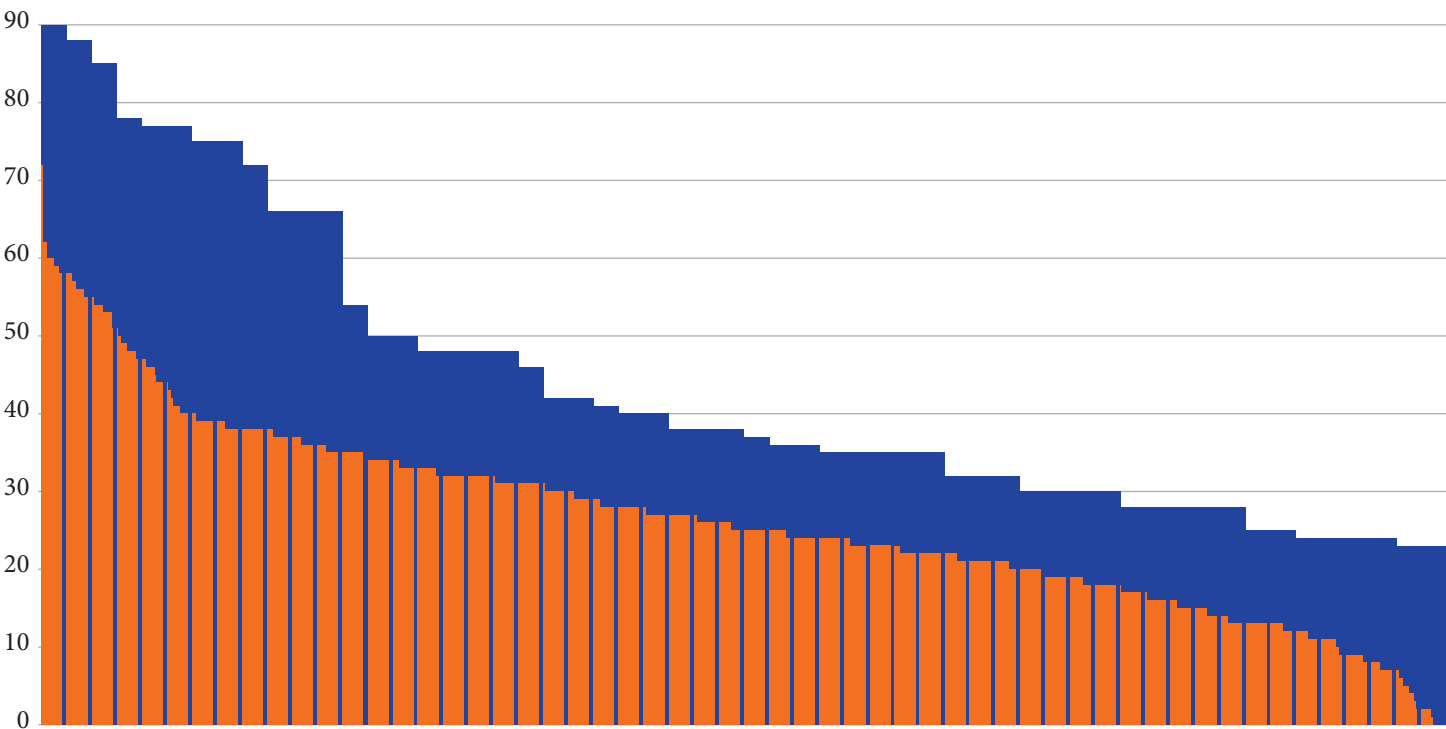
### DATA

SQUARE FOOTAGES	ASF
Classroom	54,942
Classroom Service	2,993
Teaching Lab	34,463
Teaching Lab Service	6,290
Office	89,570
Office Service	32,983
Social Study	51,790
Meeting	49,048
Dining	16,371
Merchandising	8,366
Testing/Services Labs	3,392
Other	0
“PEOPLE” MEASUREMENTS	
Weekly Student Contact Hours	48,244
Total Credit Hours	61,365
Employee FTE	653
OFFICE	
Office Station Count	735
Single Station Office Count	486
Single Station Offices > 150 ASF Count	108
LIBRARY COLLECTION	
Books	113,818
Microfilm	281,011
AV Materials	12,851

### METRICS

Classroom	0.491
Classroom Average Station Size	22.4
Office stations per Employee FTE	1.1
Office ASF per Station	121.9
Office ASF per Employee FTE	137.1
% Single Station Offices > 150 ASF	22.2%
Classroom Service %	5.4%
Teaching Lab Service %	18.3%
Office Service %	36.8%
Social/Study	0.65
Meeting	0.80
Dining	0.27
Merchandising	0.14
Testing/Services Labs	0.06
Other	0.00

### CLASSROOM GRAPHIC



- Moderate student housing
  - Space under construction/renovation
- Science Building (60K GSF)

\*At date of publication, USG Sector is proposed by Academic Affairs pending Board of Regents approval

# CLAYTON STATE UNIVERSITY

## Fayette Campus

State University >> Bachelor’s Dominant  
Total Gross Floor Area: 10,909gsf  
Residential Instruction: 10,909gsf

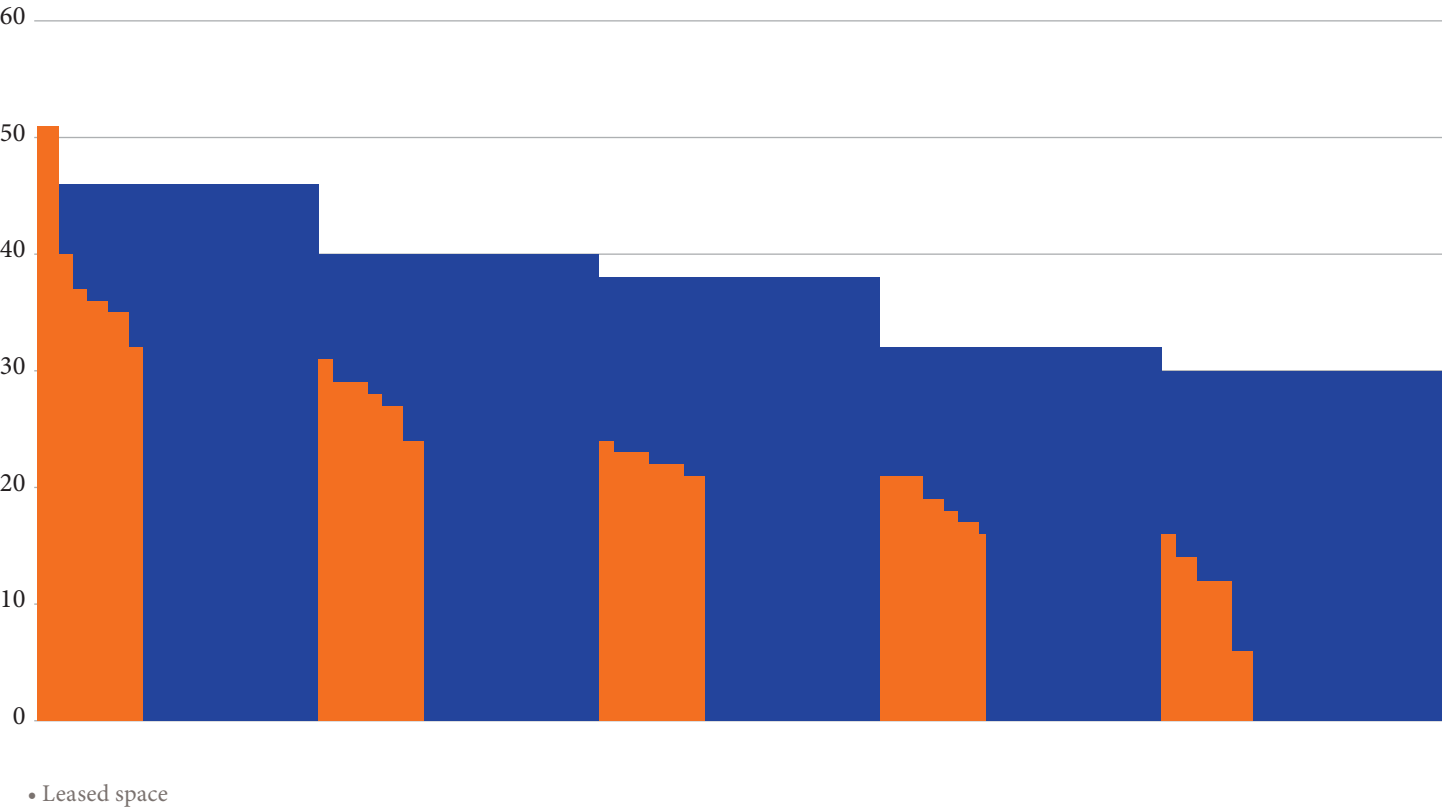
### DATA

SQUARE FOOTAGES	ASF
Classroom	4,041
Classroom Service	0
Teaching Lab	630
Teaching Lab Service	0
Office	844
Office Service	666
Social Study	704
Meeting	295
Dining	0
Merchandising	0
Testing/Services Labs	333
Other	0
“PEOPLE” MEASUREMENTS	
Weekly Student Contact Hours	1,539
Total Credit Hours	2,204
Employee FTE	10
OFFICE	
Office Station Count	7
Single Station Office Count	7
Single Station Offices > 150 ASF Count	0
LIBRARY COLLECTION	
Books	
Microfilm	
AV Materials	

### METRICS

Classroom	0.207
Classroom Average Station Size	21.7
Office stations per Employee FTE	0.7
Office ASF per Station	120.6
Office ASF per Employee FTE	87.1
% Single Station Offices > 150 ASF	0.0%
Classroom Service %	0.0%
Teaching Lab Service %	0.0%
Office Service %	78.9%
Social/Study	0.32
Meeting	0.13
Dining	0.00
Merchandising	0.00
Testing/Services Labs	0.15
Other	0.00

### CLASSROOM GRAPHIC



\*At date of publication, USG Sector is proposed by Academic Affairs pending Board of Regents approval