

Office of Advancement Reconfigure Reception Area Phase I

Requested:

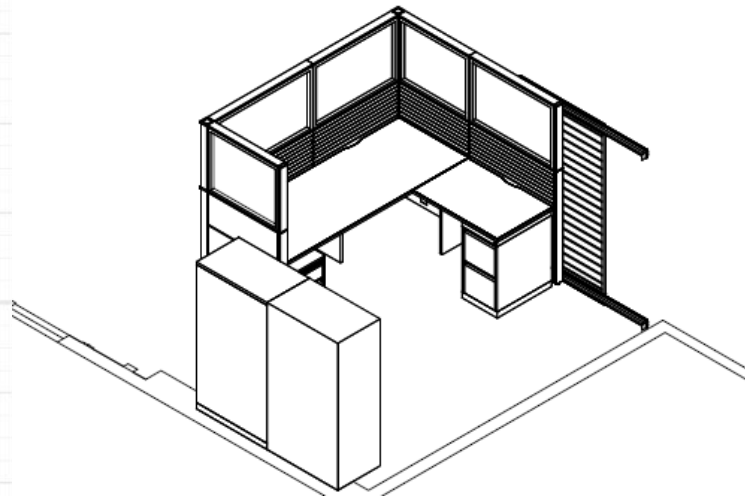
Create a cubicle space in the existing open lobby at Woodlands Hall second floor to enhance privacy when working with prospect donors' information



Existing

Recommended :

Create a workstation cubicle with one foot from ceiling open walls to keep adjustments to HVAC at minimum while providing required privacy

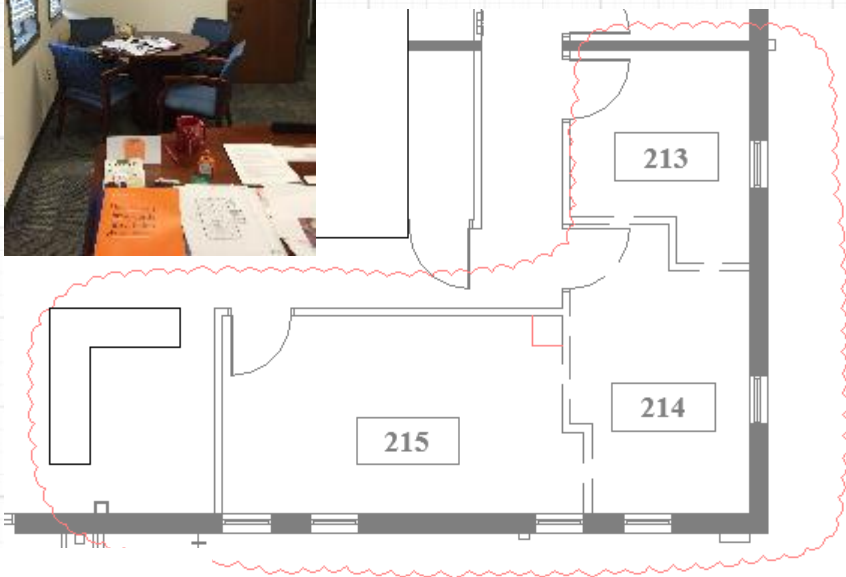


Proposed

Office of Advancement Reconfigure VP Office Phase II

Requested:

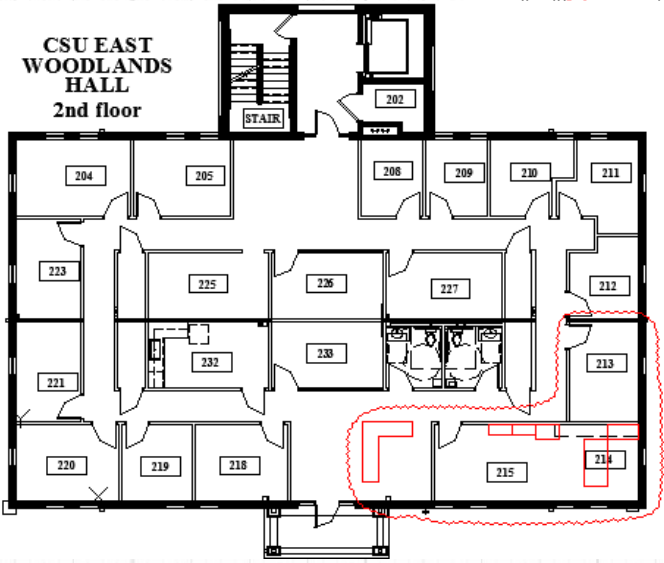
Expand office of VP of University Advancement to allow space for small ad hoc or planned meetings with the division staff, volunteers and donors



Existing

Recommended:

Create a workstation cubicle with one foot from ceiling open walls to keep adjustments to HVAC at minimum while providing required privacy



Proposed



Office of Advancement

Merge office and file room

Phase III

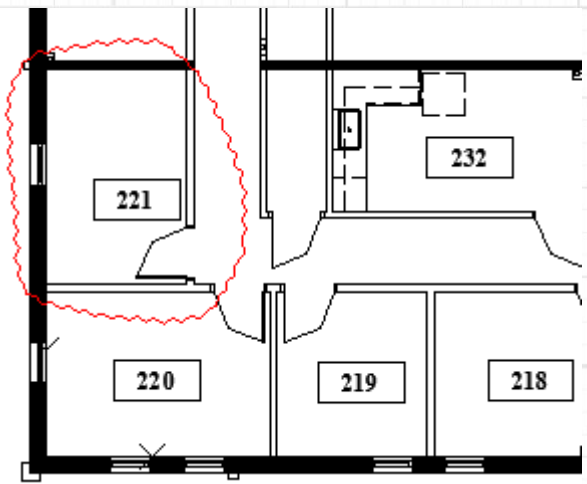
Requested:

Remove wall between file room and office to make office bigger



Recommended :

Wall can be removed



Existing

Proposed



Disability Resource Center

Accessible walk path to East side

Requested:

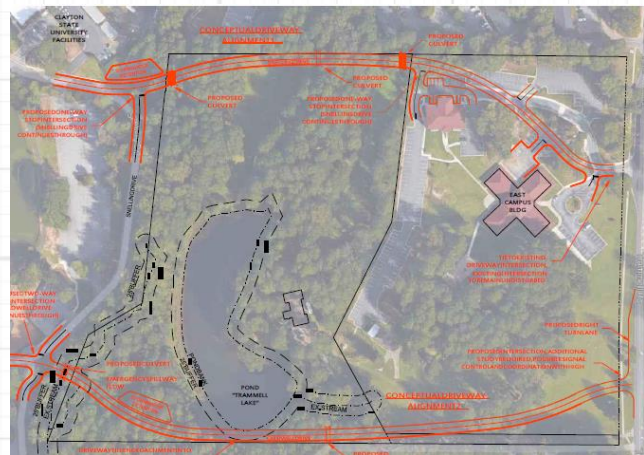
ADA compliant walkway connecting main campus with CSU East side



Existing

Recommended :

Due to cost associated with construction of a walk path as a stand alone project, include sidewalk at the time with the road construction



Proposed

